



DATOS RELEVANTES DEL MERCADO ELÉCTRICO PANAMEÑO

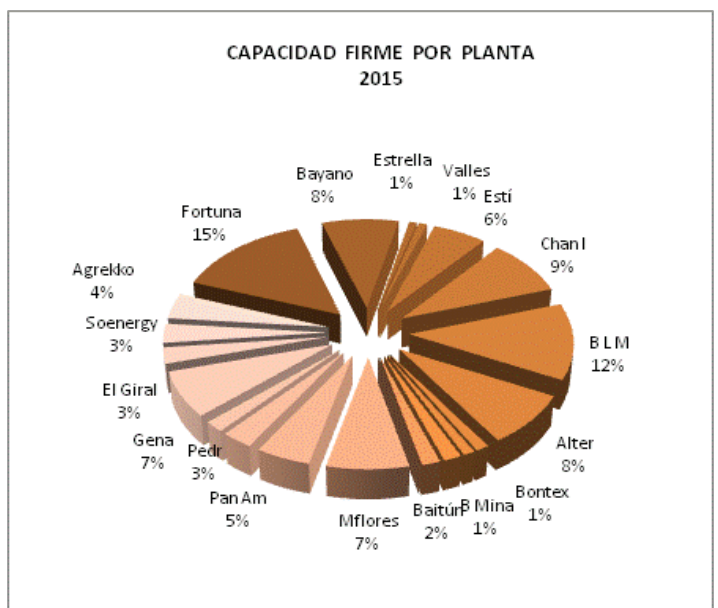
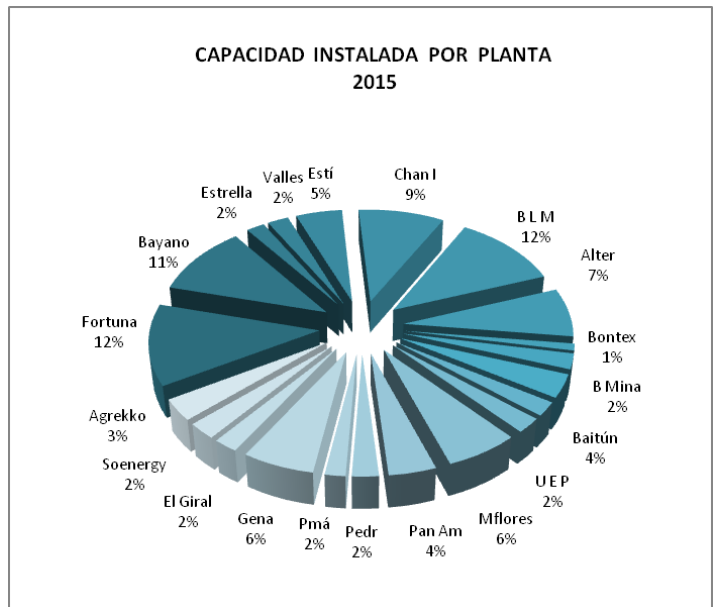
AGOSTO DE 2015

CONTENIDO

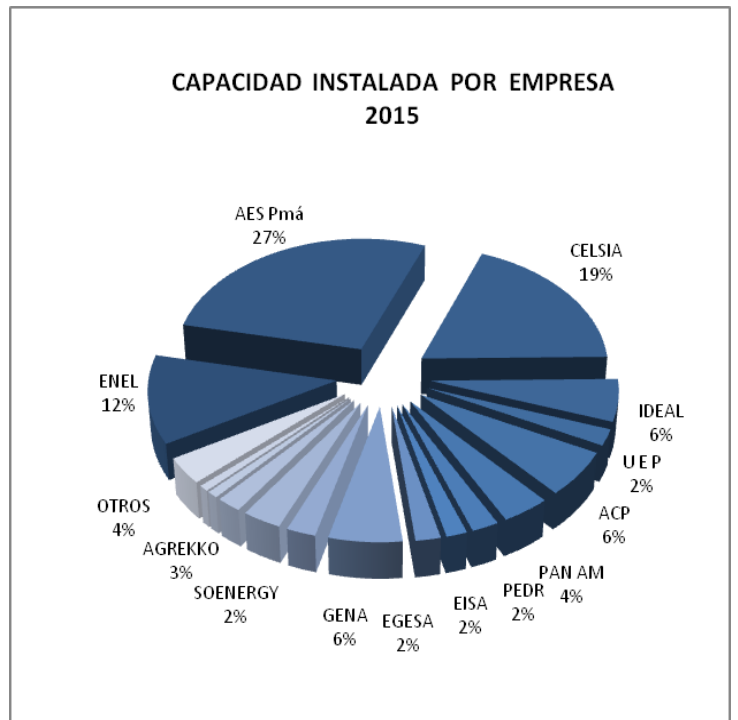
I.	CAPACIDAD INSTALADA Y CAPACIDAD FIRME POR AGENTE Y POR PLANTA	3
II.	CAPACIDAD INSTALADA Y CAPACIDAD FIRME VS DEMANDA MÁXIMA MENSUAL	6
III.	POTENCIA FIRME CONTRATADA Y POTENCIA DISPONIBLE DE LOS AGENTES HIDRÁULICOS Y TÉRMICOS	7
IV.	GENERACIÓN POR EMPRESA Y POR PLANTA	8
V.	CAPACIDAD INSTALADA POR TIPO DE TECNOLOGÍA	9
VI.	IMPORTACIONES Y EXPORTACIONES	9
VII.	COMPRA Y VENTA DE ENERGÍA EN EL MERCADO OCASIONAL	10
VIII.	PRECIO PROMEDIO PONDERADO DE LA POTENCIA CONTRATADA	11
IX.	COSTO MARGINAL DEL SISTEMA	12
X.	DEMANDA MÁXIMA MENSUAL Y ANUAL	12
XI.	COMPORTAMIENTO DEL SISTEMA (GENERACIÓN/CONSUMO) MENSUAL	13
XII.	COSTOS DE POTENCIA Y ENERGÍA CONTRATADA	13
XIII.	ENERGÍA ADQUIRIDA EN CONTRATOS Y EN EL MERCADO OCASIONAL POR LAS DISTRIBUIDORAS	14
XIV.	CLIENTES, VENTAS E INGRESOS POR DISTRIBUIDORA	14

I. CAPACIDAD INSTALADA Y CAPACIDAD FIRME POR AGENTE Y POR PLANTA

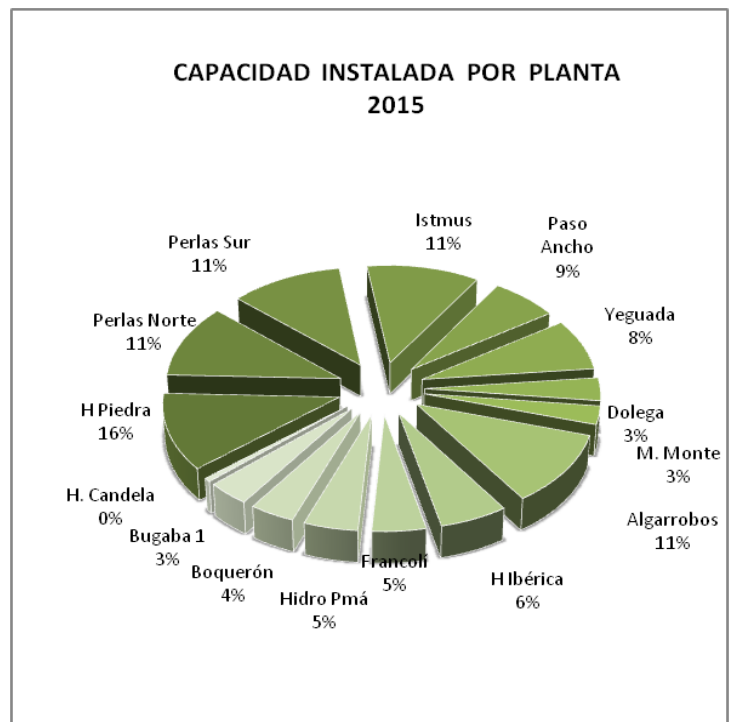
Empresa	Planta	Capacidad Instalada	Capacidad Firme
		MW	MW
ENEL	Fortuna	300.00	284.00
AES Pmá	Bayano	260.00	160.12
AES Pmá	Estrella	47.20	16.13
AES Pmá	Valles	54.76	17.63
AES Pmá	Estí	120.00	112.67
AES Chan	Chan I	222.17	175.33
CELSIA	B L M	280.00	240.50
CELSIA	Alter	179.43	164.21
CELSIA	Bontex	25.34	23.04
IDEAL	B Mina	56.80	20.07
IDEAL	Baitún	85.90	31.09
EISA	Mlirio	51.60	32.38
U E P	U E P	55.00	0.00
ACP	Mflores	153.92	144.50
PAN AM	Pan Am	99.00	96.00
PEDR	Pedr	55.35	55.35
EGESA	Pmá	42.80	34.00
GENA	Gena	150.00	144.50
VALLEY	El Giral	50.85	50.40
SOENERGY	Soenergy	60.00	60.00
AGREKKO	Agrekko	80.00	80.00
PEDREG	Pedregalito	20.00	5.25
R CHICO	Río Chico	10.00	3.22
A VALLE	Alto valle	15.50	3.06
CALDERA	Mendre 1	19.75	3.90
ENEL	San Juan	9.00	0.00
ELECTROG	Mendre 2	7.80	1.56
OTROS	Otros	89.97	30.20
	TOTAL	2,602.14	1,989.11



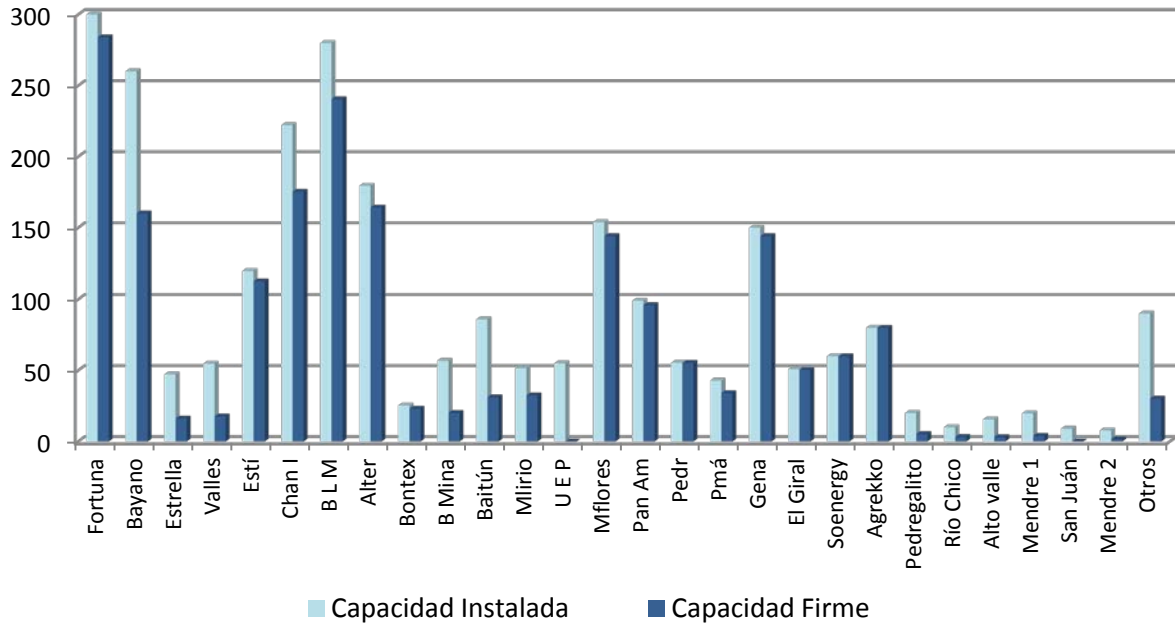
Empresa	Capacidad Instalada MW	Capacidad Firme MW
ENEL	300.00	284.00
AES	704.13	481.88
CELSIA	484.77	427.75
IDEAL	142.70	51.16
U E P	55.00	0.00
ACP	153.92	144.50
PAN AM	99.00	96.00
PEDR	55.35	55.35
EGESA	42.80	34.00
EISA	51.60	32.38
GENA	150.00	144.50
SOENERGY	60.00	60.00
AGREKKO	80.00	80.00
ESEPSA	22.48	7.31
PEDREG	20.00	5.25
OTROS	89.97	30.20
R CHICO	10.00	3.22
A VALLE	15.50	3.06
CALDERA	19.75	3.90
ELECTROG	7.80	1.56
TOTAL	2,615.62	1,996.42



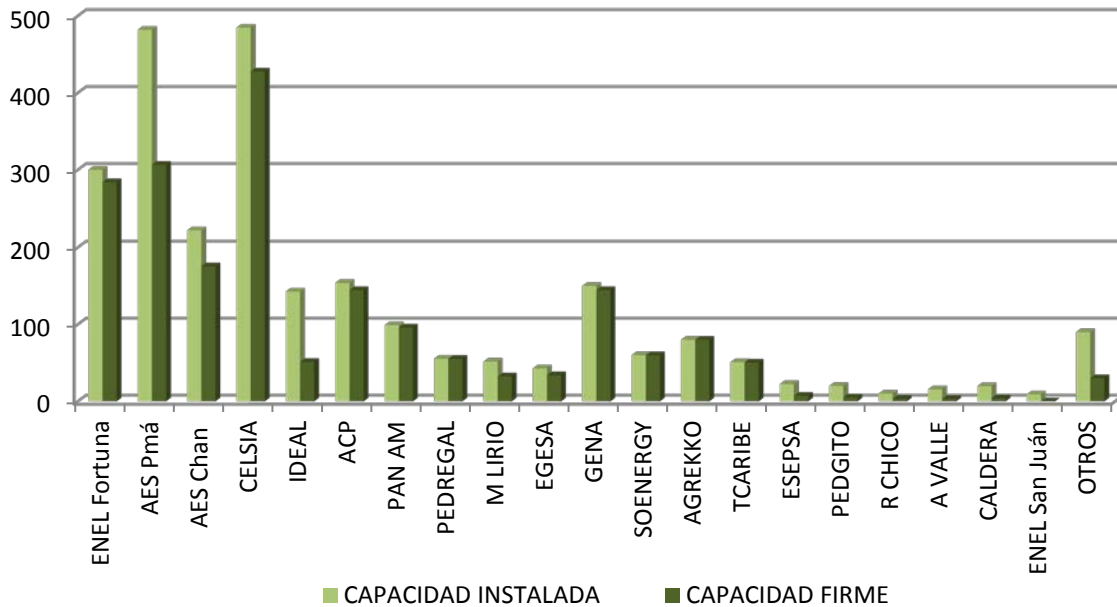
OTROS	Capacidad Instalada MW	Capacidad Firme MW
H Piedra	10.50	3.00
Perlas Norte	10.00	2.46
Perlas Sur	10.00	2.46
Istmus	10.00	2.49
Paso Ancho	6.00	4.30
Yeguada	7.00	3.00
Dolega	3.12	1.10
M. Monte	2.50	0.80
Algarrobos	9.86	2.41
H Ibérica	5.30	5.00
Francolí	4.18	0.91
Hidro Pmá	4.20	0.74
Boquerón	3.50	0.90
Bugaba 1	3.28	0.50
H. Candela	0.53	0.13
TOTAL	89.97	30.20



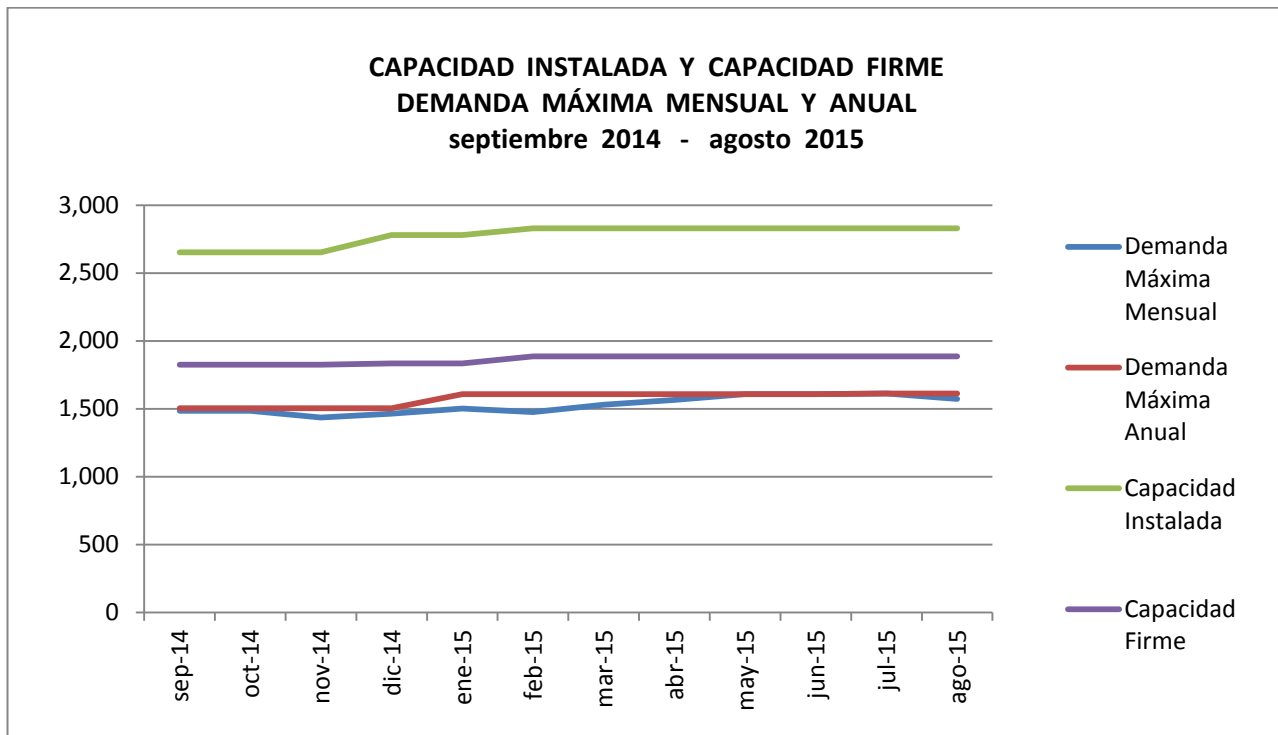
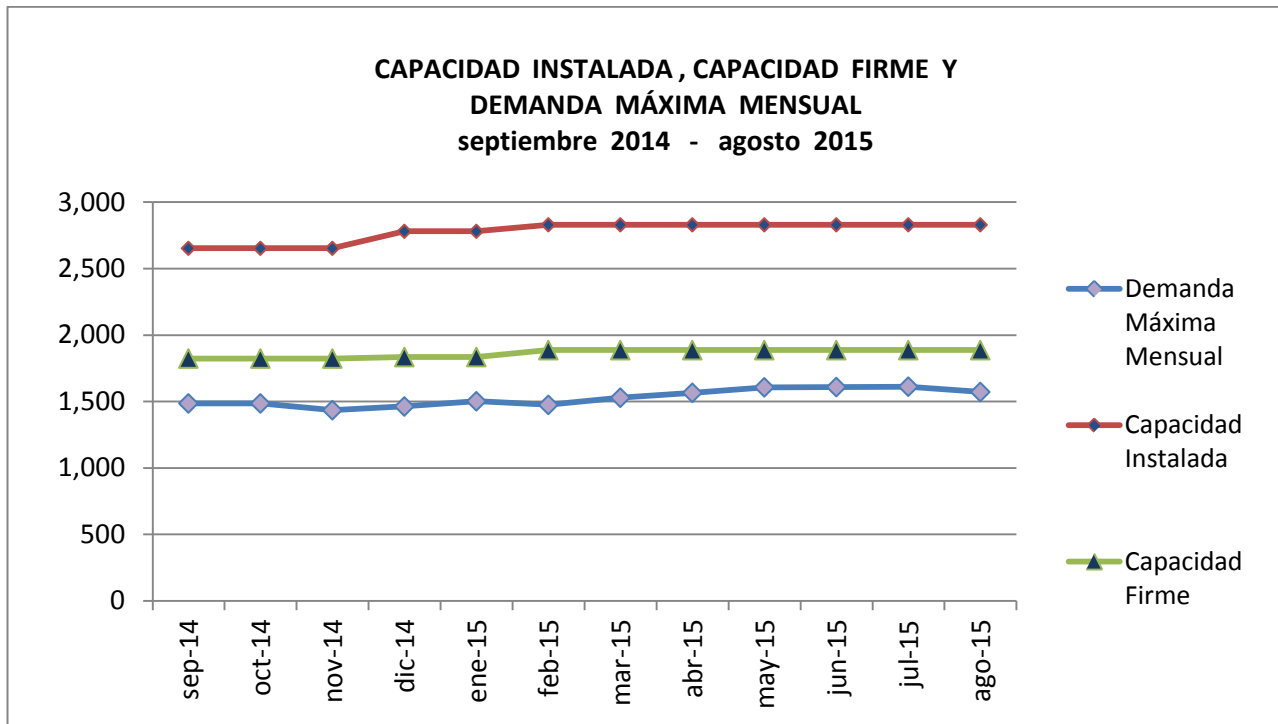
CAPACIDAD INSTALADA Y CAPACIDAD FIRME POR PLANTA (MW) 2015



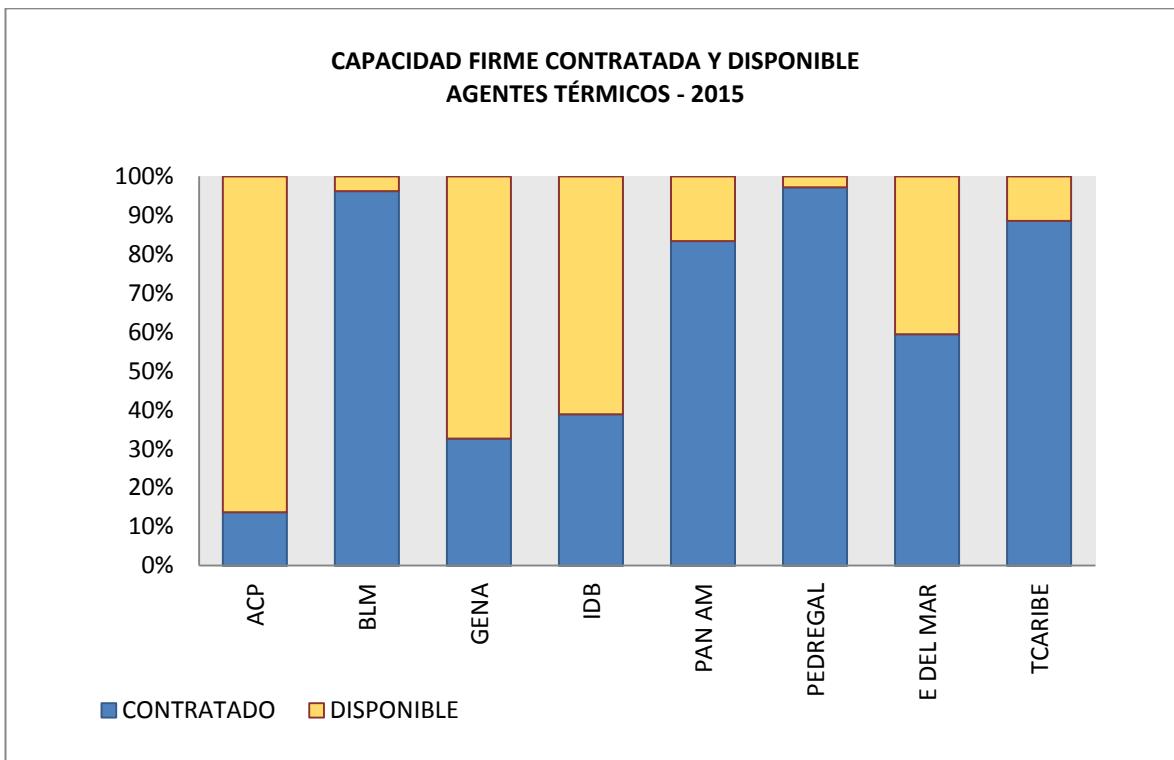
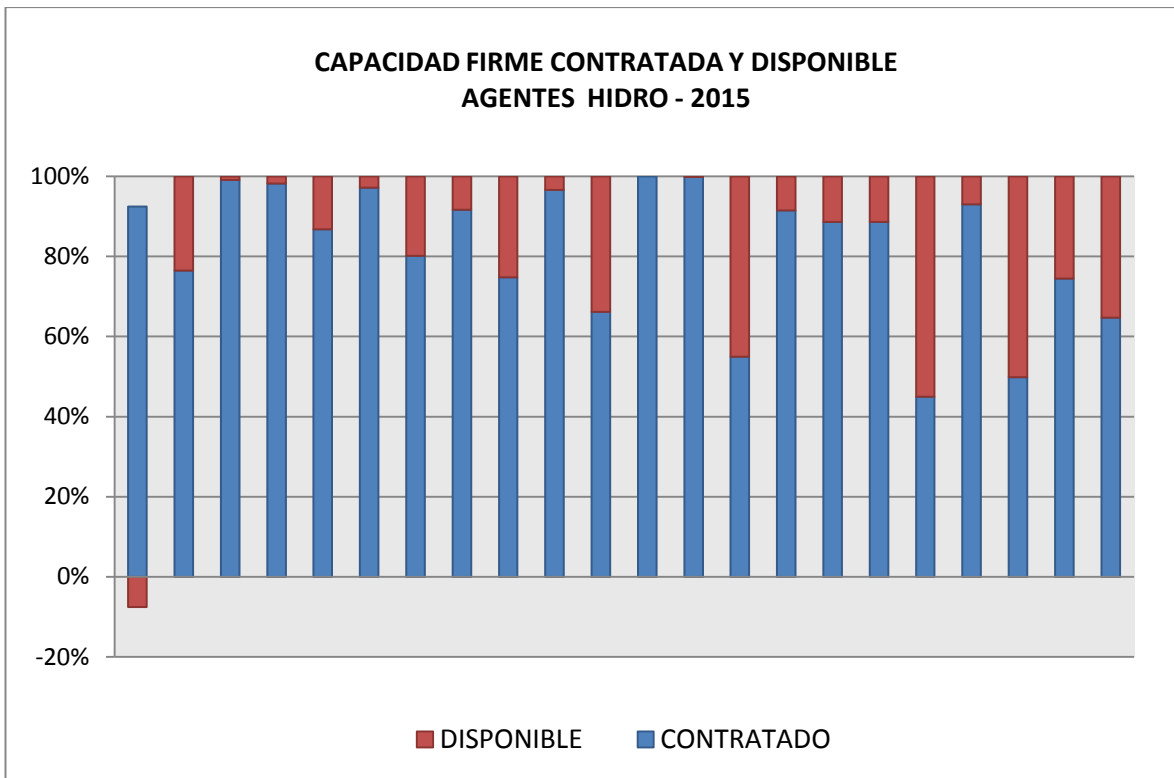
CAPACIDAD INSTALADA Y CAPACIDAD FIRME POR EMPRESA (MW) 2015



II. CAPACIDAD INSTALADA Y CAPACIDAD FIRME VS DEMANDA MÁXIMA MENSUAL

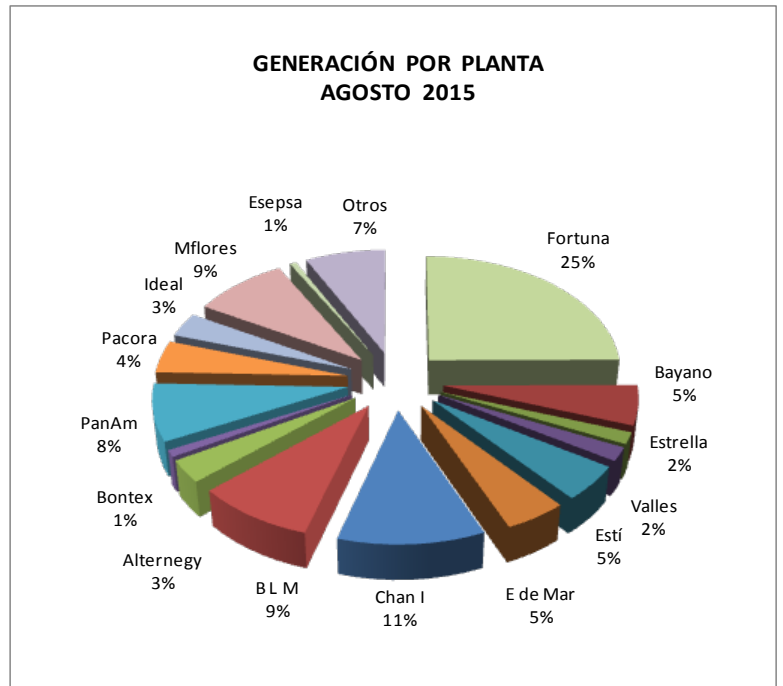


III. POTENCIA FIRME CONTRATADA Y POTENCIA DISPONIBLE DE LOS AGENTES HIDRÁULICOS Y TÉRMICOS

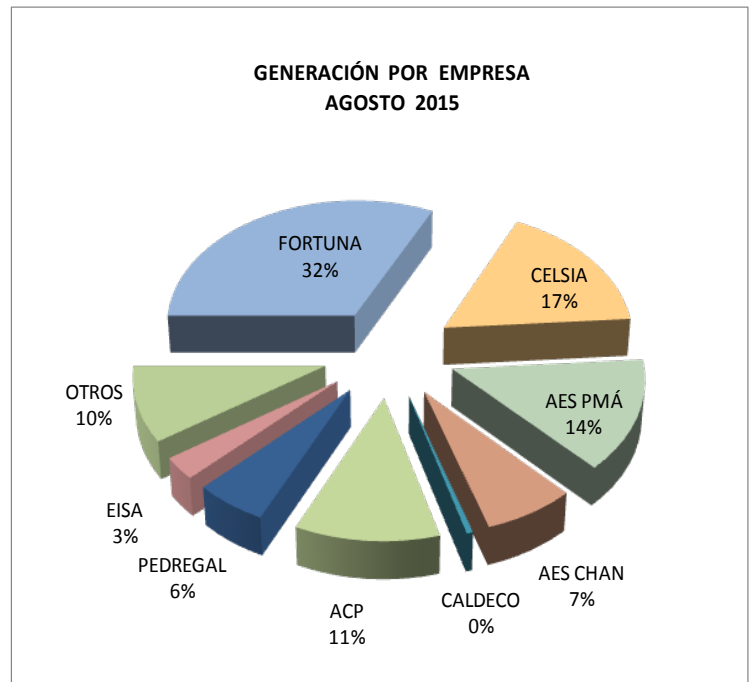


IV. GENERACIÓN POR EMPRESA Y POR PLANTA

Empresa	Planta	MWh
ENEL	Fortuna	149,900.07
AES Pmá	Bayano	25,765.09
AES Pmá	Estrella	17,452.09
AES Pmá	Valles	19,846.35
AES Pmá	Estí	36,129.11
AES Chan	Chan I	154,365.77
CELSIA	B L M	63,341.85
CELSIA	Alternegy	88,135.83
CELSIA	Bontex	7,071.67
PAN AM	PanAm	55,536.87
IDEAL	Ideal	40,310.29
EGESA	Egesa	0.00
ACP	Mflores	17,546.63
Esepsa	Esepsa	4,661.06
OTROS	Otros	68,335.68
TOTAL		748,398.35

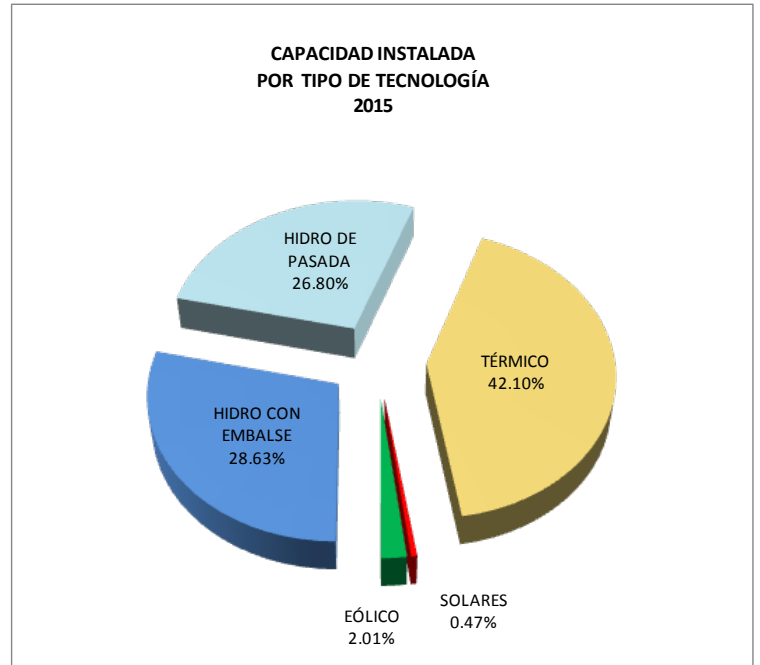


Empresa	MWh
FORTUNA	149,900.07
CELSIA	127,044.86
AES PMÁ	88,057.56
AES CHAN	85,055.82
CALDECO	4,650.23
ACP	17,546.63
PEDREGAL	28,466.85
EISA	23,229.76
OTROS	68,335.68
TOTAL	542,787.18



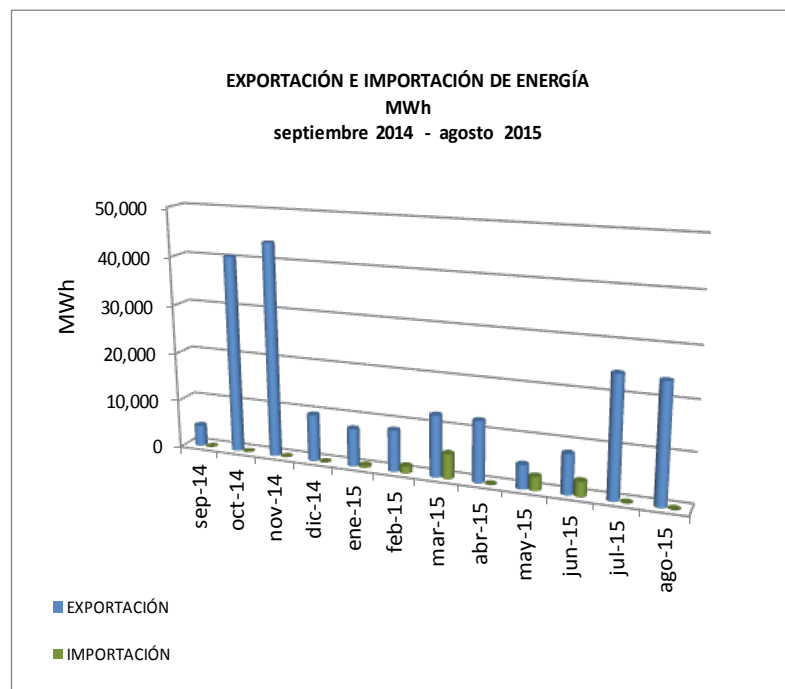
V. CAPACIDAD INSTALADA POR TIPO DE TECNOLOGÍA

TIPO DE TECNOLOGÍA	MW	%
HIDRO CON EMBALSE	782.00	28.63%
HIDRO DE PASADA	732.00	26.80%
TÉRMICO	1,150.04	42.10%
SOLARES	12.76	0.47%
EÓLICO	55.00	2.01%
TOTAL	2,731.80	100%



VI. IMPORTACIONES Y EXPORTACIONES

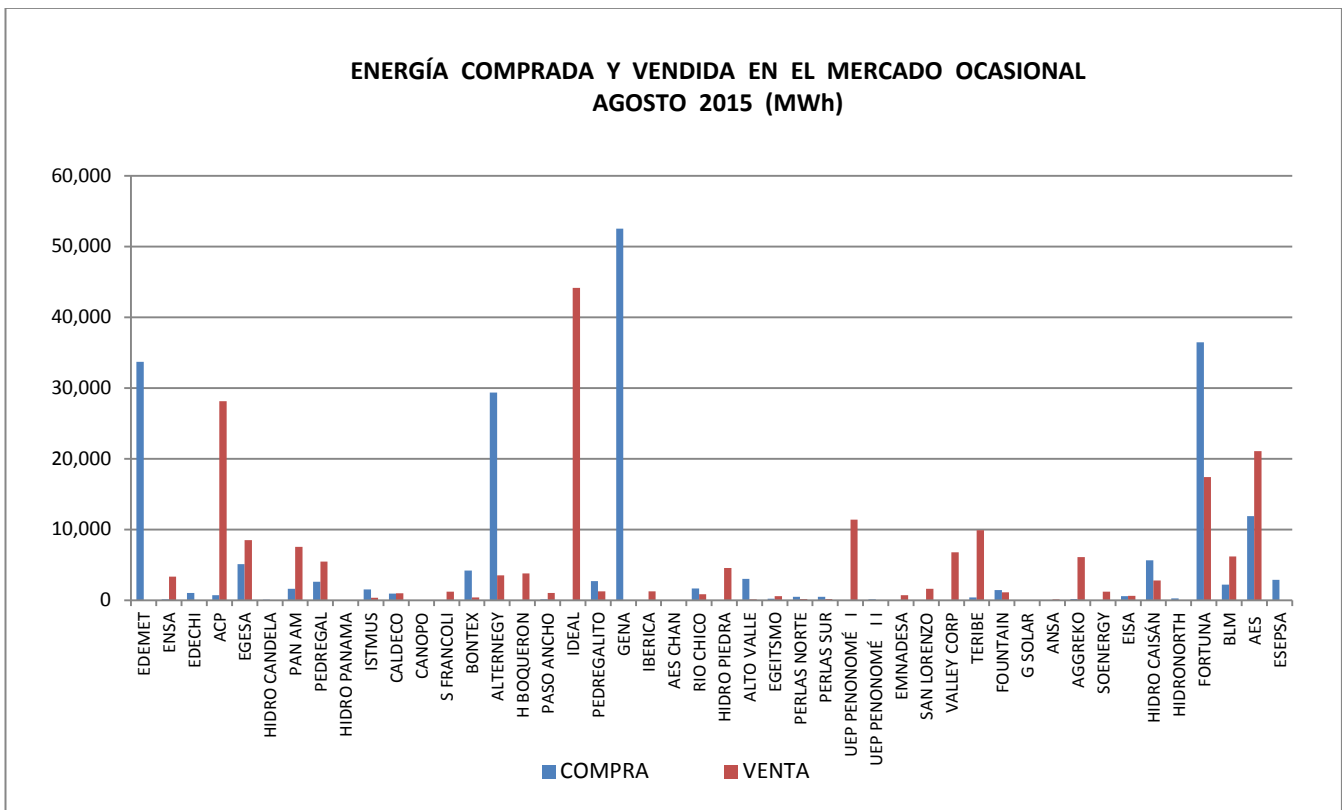
	EXPORTACIÓN MWh	IMPORTACIÓN MWh
sep-14	4,352.77	0.00
oct-14	40,477.07	0.00
nov-14	43,846.22	0.00
dic-14	9,600.67	0.00
ene-15	7,730.58	434.00
feb-15	8,500.20	1,395.36
mar-15	12,564.71	5,074.91
abr-15	12,467.07	0.00
may-15	4,823.34	2,774.00
jun-15	8,131.94	3,012.40
jul-15	24,449.16	13.00
ago-15	24,006.27	0.00



VII. COMPRA Y VENTA DE ENERGÍA EN EL MERCADO OCASIONAL

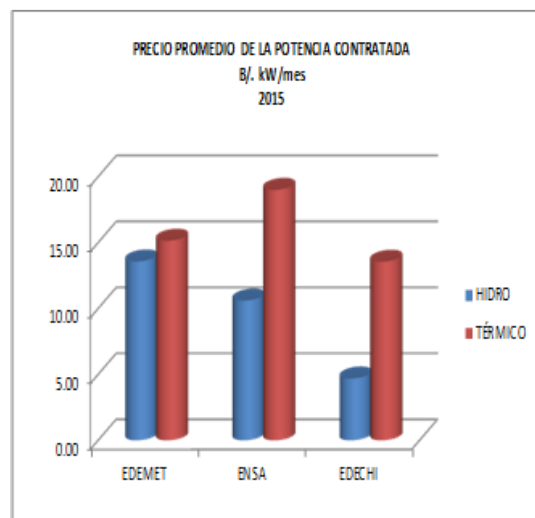
MERCADO OCASIONAL AGOSTO 2015				
EMPRESA	COMPRA		VENTA	
	MWh	B/.	MWh	B/.
EDEMET	33720.00	3,388,040.41	0.00	0.00
ENSA	130.43	13,967.47	3,320.70	327,513.37
EDECHI	1026.54	105,976.64	53.25	4,703.81
ACP	720.74	66,332.13	28,146.98	2,664,163.52
EGESA	5091.73	442,522.70	8,518.76	1,032,721.22
HIDRO CANDELA	75.34	7,792.47	7.11	648.50
PAN AM	1630.97	117,411.09	7,535.74	674,416.93
PEDREGAL	2616.92	184,612.57	5,473.71	522,748.02
HIDRO PANAMA	2.57	292.04	0.00	0.00
ISTMUS	1517.81	157,223.00	363.26	31,773.98
CALDECO	923.12	101,270.36	1,003.82	80,825.51
CANOPO	0.00	0.00	26.85	2,403.67
S FRANCOLI	2.89	278.04	1,215.48	119,232.39
BONTEX	4211.20	436,314.53	382.86	33,485.92
ALTERNEGY	29357.64	2,763,286.86	3,513.45	342,889.61
H BOQUERON	0.80	77.60	3,778.37	366,519.02
PASO ANCHO	109.59	8,688.69	1,044.42	101,029.97
IDEAL	10.66	1,058.75	44,158.39	4,090,033.29
PEDREGALITO	2728.96	271,263.54	1,249.14	110,653.05
GENA	52,549.233	5,174,620.93	0.00	0.00
IBERICA	5.378	453.67	1,249.780	118,797.85
AES CHAN	2.682	265.58	0.00	0.00
RIO CHICO	1,680.235	166,111.47	870.919	77,288.13
HIDRO PIEDRA	34.150	3,077.70	4,578.472	435,857.32
ALTO VALLE	3,025.707	284,935.45	140.658	12,014.78
EGEITSMO	209.461	23,214.32	591.510	48,543.26
PERLAS NORTE	494.708	52,447.59	165.483	14,175.41
PERLAS SUR	475.163	50,513.16	187.036	16,188.92
UEP PENONOMÉ I	53.075	4,790.36	11,403.375	1,126,303.42
UEP PENONOMÉ II	139.423	12,609.85	0.000	0.00
EMNADESA	36.259	3,861.78	732.162	66,185.97
SAN LORENZO	41.948	3,676.32	1,607.445	155,657.76
VALLEY CORP	53.165	4,277.93	6,786.576	749,109.05
TERIBE	421.441	48,436.32	9,898.790	911,807.49
FOUNTAIN	1,423.069	142,664.50	1,127.767	96,144.36
G SOLAR	0.00	0.00	6.779	756.02
ANSA	0.00	0.00	123.816	13,891.89
AGGREKO	197.401	17,749.14	6,085.107	813,862.42
SOENERGY	0.294	28.33	1,212.952	160,617.65
EISA	584.185	47,293.60	643.302	50,608.26
HIDRO CAISÁN	5,671.425	588,952.61	2,804.863	237,246.41
HIDRONORTH	252.198	24,804.26	0.00	0.00
FORTUNA	36,460.888	3,303,586.50	17,399.879	1,741,517.76
BLM	2,233.482	272,008.84	6,209.457	521,791.10
AES	11,878.481	1,200,731.47	21,082.664	1,910,072.90
ESEPSA	2,899.714	286,679.34	0.00	0.00
TOTAL	204,701.07	19,784,199.91	204,701.07	19,784,199.91

**ENERGÍA COMPRADA Y VENDIDA EN EL MERCADO OCASIONAL
AGOSTO 2015 (MWh)**



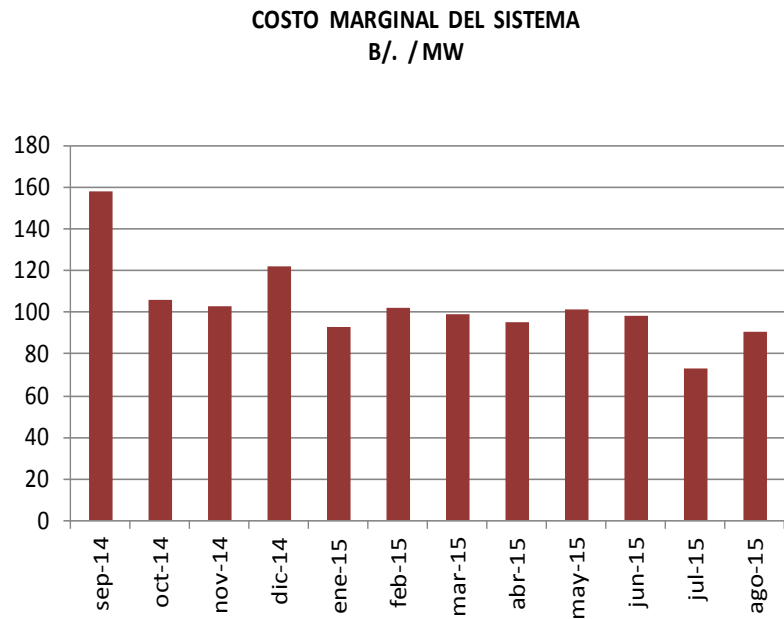
VIII. PRECIO PROMEDIO PONDERADO DE LA POTENCIA CONTRATADA

	HIDRO	TÉRMICO	TOTAL
	(B/. kW/mes)		
EDEMET	13.57	15.14	14.51
ENSA	10.60	19.00	16.41
EDECHI	4.69	13.55	9.12



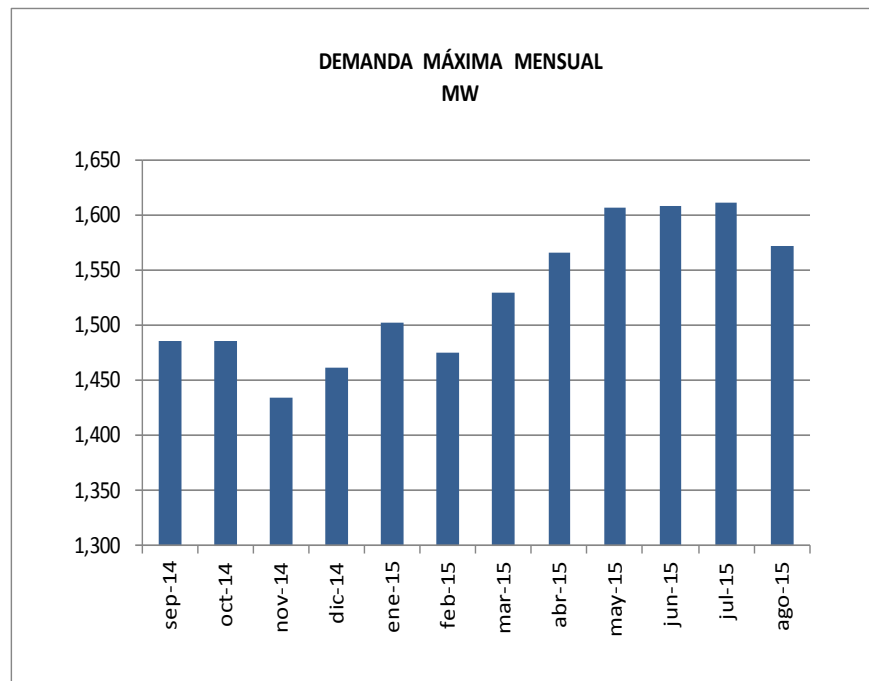
IX. COSTO MARGINAL DEL SISTEMA

	C M S B/. / MWh
sep-14	157.92
oct-14	106.25
nov-14	102.81
dic-14	121.81
ene-15	92.63
feb-15	102.31
mar-15	99.46
abr-15	95.04
may-15	101.7
jun-15	98.18
jul-15	72.82
ago-15	90.52

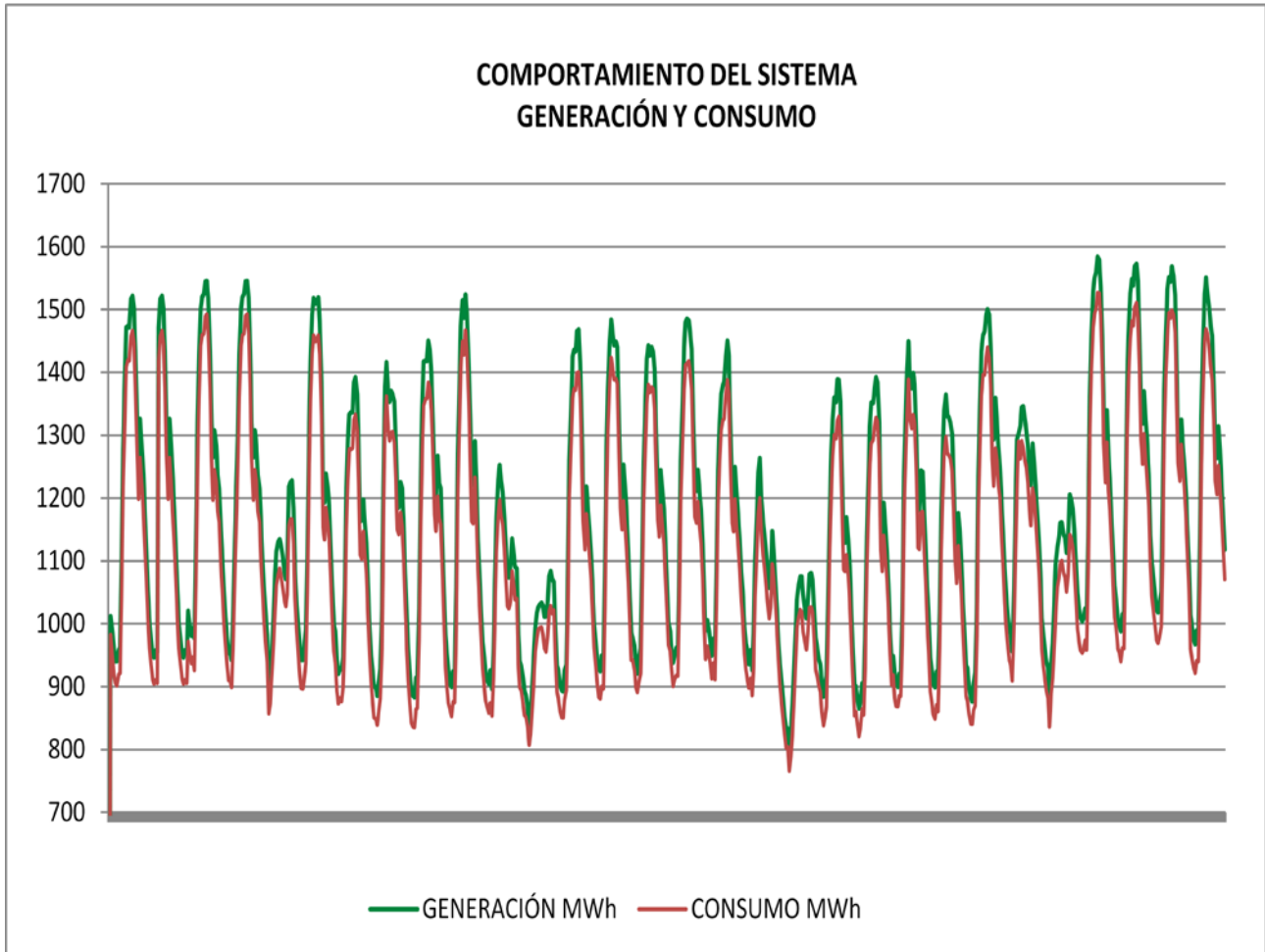


X. DEMANDA MÁXIMA MENSUAL Y ANUAL

mes	Demanda Máxima
sep-14	1,486.00
oct-14	1,486.00
nov-14	1,435.00
dic-14	1,462.00
ene-15	1,502.00
feb-15	1,475.00
mar-15	1,529.00
abr-15	1,566.00
may-15	1,607.00
jun-15	1,609.00
jul-15	1,612.00
ago-15	1,572.00



XI. COMPORTAMIENTO DEL SISTEMA (GENERACIÓN/CONSUMO) MENSUAL



XII. COSTOS DE POTENCIA Y ENERGÍA CONTRATADA

AGOSTO	EDEMET				ENSA			
	HIDRO	TÉRMICO	EÓLICO	TOTAL	HIDRO	TÉRMICO	EÓLICO	TOTAL
COSTO POTENCIA (B./.)	8,225,808.51	3,723,160.90	0.00	11,948,969.41	3,273,295.66	4,175,325.36	0.00	7,448,621.02
COSTO ENERGÍA (B./.)	18,797,943.27	9,504,083.14	1,611,907.91	29,913,934.33	11,192,297.09	11,343,012.67	732,632.99	23,267,942.75
COSTO TOTAL (B./.)	27,023,751.78	13,227,244.04	1,611,907.91	41,862,903.74	14,465,592.75	15,518,338.03	732,632.99	30,716,563.77
ENERGÍA (MWh)	296,549.73	73,242.93	16,075.28	385,867.94	154,111.19	12,865.45	7,306.42	285,265.41
MONÓMICO (B./MWh)	91.13	180.59	100.27	108.49	93.86	1,206.20	100.27	107.68

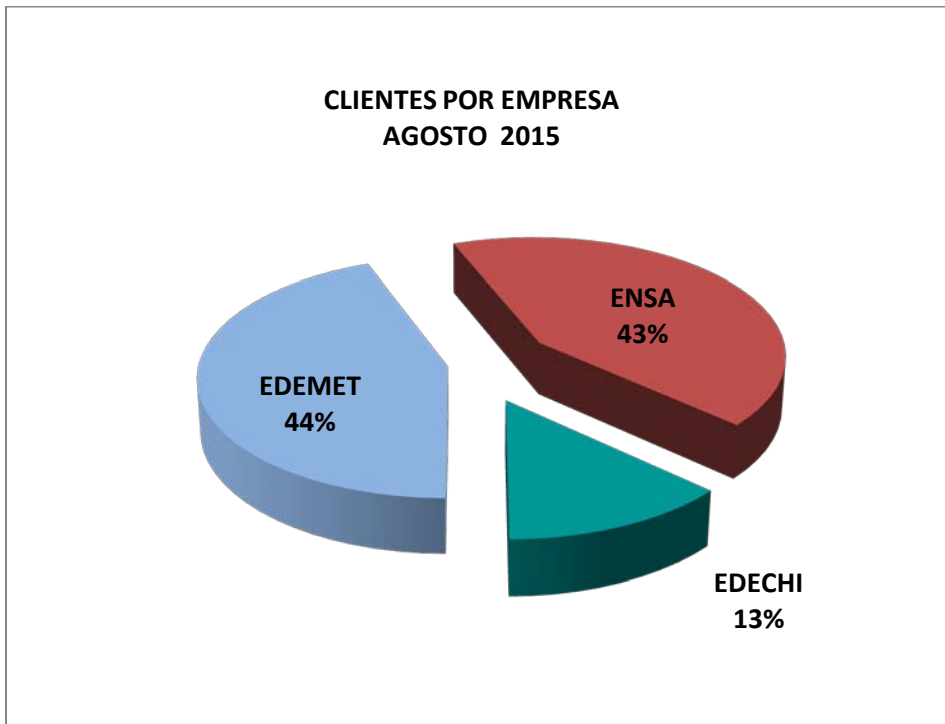
AGOSTO	EDECHI				TOTAL			
	HIDRO	TÉRMICO	EÓLICO	TOTAL	HIDRO	TÉRMICO	EÓLICO	TOTAL
COSTO POTENCIA (B./.)	697,124.15	729,296.20	0.00	1,426,420.35	12,196,228.31	8,627,782.46	0.00	20,824,010.78
COSTO ENERGÍA (B./.)	4,079,312.89	1,847,099.23	542,113.87	6,468,525.99	34,069,553.25	22,694,195.04	2,886,654.77	59,650,403.07
COSTO TOTAL (B./.)	4,776,437.04	2,576,395.43	542,113.87	7,894,946.34	46,265,781.57	31,321,977.50	2,886,654.77	80,474,413.85
ENERGÍA (MWh)	53,600.49	14,143.87	5,406.41	73,150.77	504,261.42	100,252.25	28,788.10	633,301.78
MONÓMICO (B./MWh)	89.11	182.16	100.27	107.93	91.75	312.43	100.27	127.07

XIII. ENERGÍA ADQUIRIDA EN CONTRATOS Y EN EL MERCADO OCASIONAL POR LAS DISTRIBUIDORAS

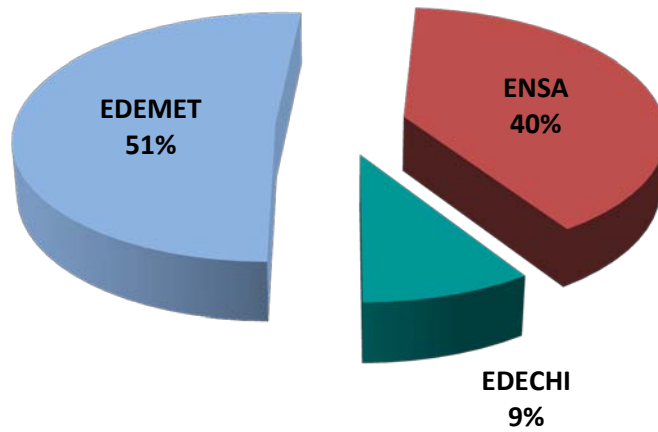
MWh	EDEMET	ENSA	EDECHI	TOTAL
Energía en Contratos	385,867.942	315,918.00	73,150.768	774,936.71
Energía en Ocasional	9,341.052	-6,820.00	3,816.952	2,521.05
Total	395,208.99	309,098.00	76,967.72	777,457.76
% Mercado Ocasional	2.36%	-2.21%	4.96%	0.32%

XIV. CLIENTES, VENTAS E INGRESOS POR DISTRIBUIDORA

	NÚMERO DE CLIENTES	VENTAS (kWh)	INGRESOS US \$
EDEMET	435,143	365,016,805	62,913,850
ENSA	414,756	276,116,419.00	53,302,522.00
EDECHI	128,165	58,623,850	11,863,806
TOTAL	978,064	699,757,074.00	128,080,178



**VENTAS DE ENERGÍA POR EMPRESA
AGOSTO 2015**



**INGRESOS POR EMPRESA
AGOSTO 2015**

