

**PESIN
2023**

TOMO III

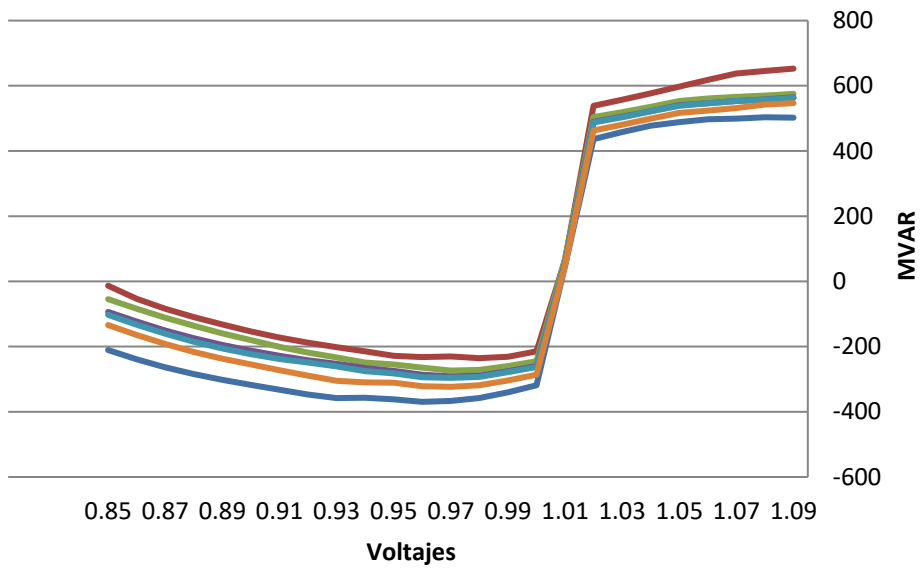
ANEXO V

**ANÁLISIS QV
LARGO PLAZO**

(ESCENARIO DE REFERENCIA)

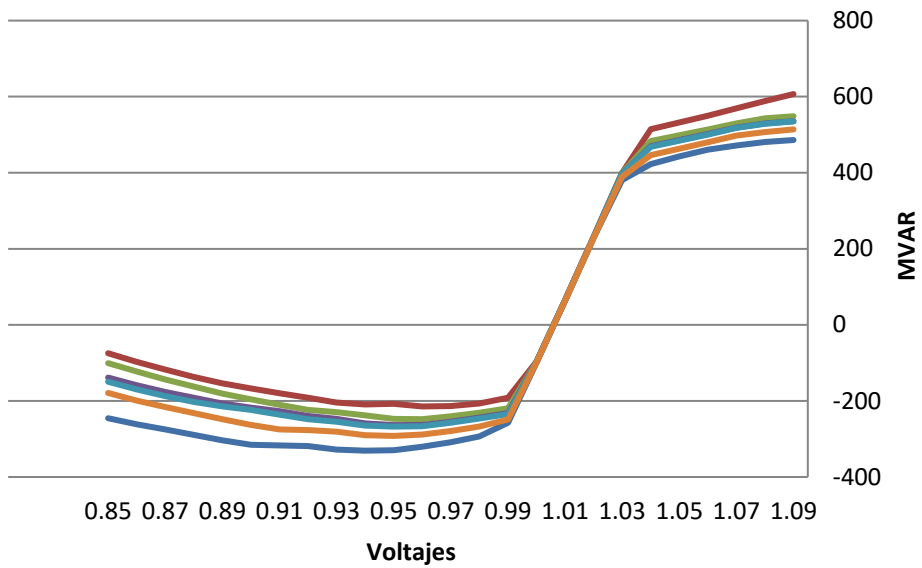
2027 LLUVIOSA

1023-3-2027CA_ModMax_Lluv Nodo: 6001



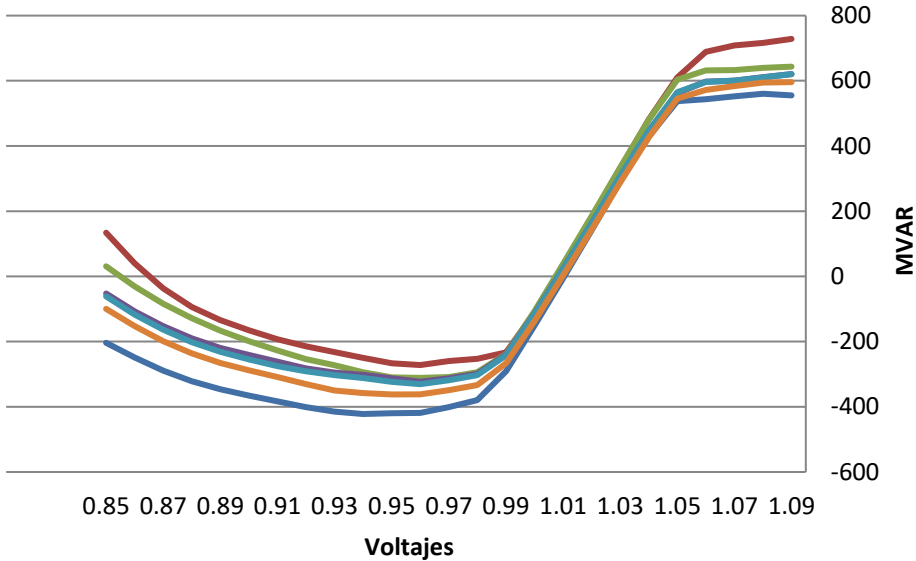
- BASE CASE
- VLTAGE 6460-6713(2C)
- VLTAGE 6005-6596(0A)
- VLTAGE 6837-6840(1)
- VLTAGE 6005-6830(9A)
- VLTAGE 6008-6240(3C)

1023-3-2027CA_ModMax_Lluv Nodo: 6002



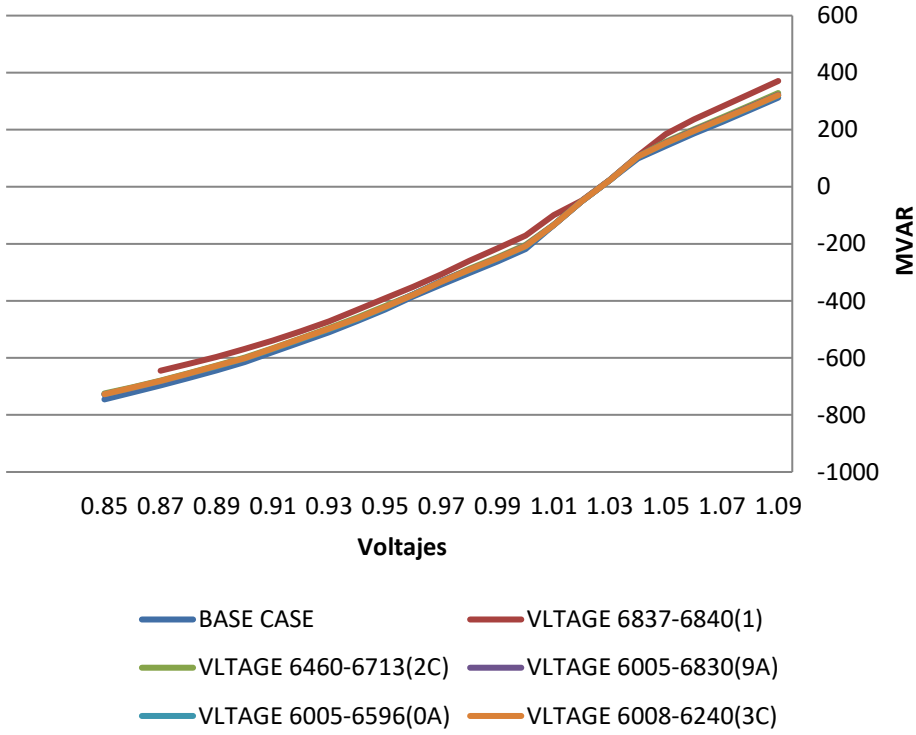
- BASE CASE
- VLTAGE 6460-6713(2C)
- VLTAGE 6005-6596(0A)
- VLTAGE 6837-6840(1)
- VLTAGE 6005-6830(9A)
- VLTAGE 6008-6240(3C)

1023-3-2027CA_ModMax_Lluv Nodo: 6005

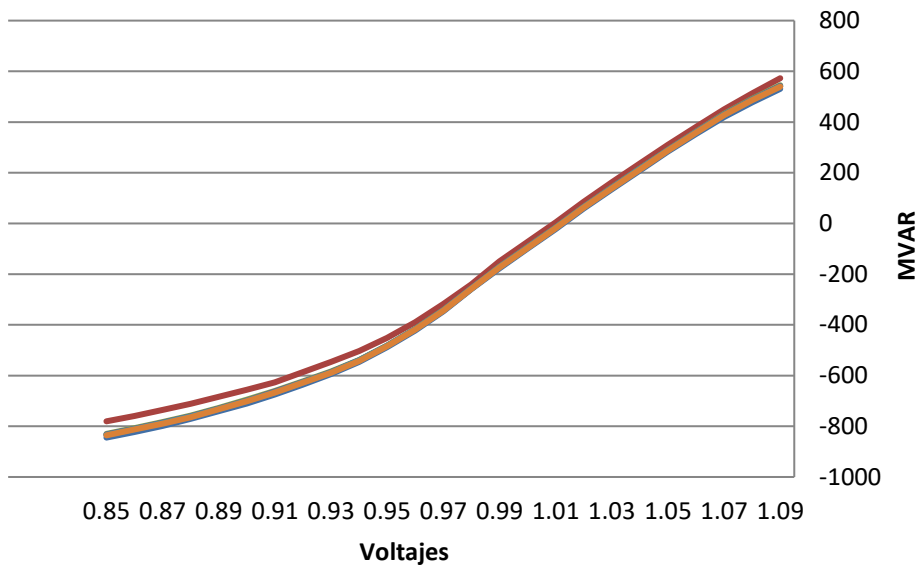


- BASE CASE
- VLTAGE 6837-6840(1)
- VLTAGE 6460-6713(2C)
- VLTAGE 6005-6830(9A)
- VLTAGE 6005-6596(0A)
- VLTAGE 6008-6240(3C)

1023-3-2027CA_ModMax_Lluv Nodo: 6009

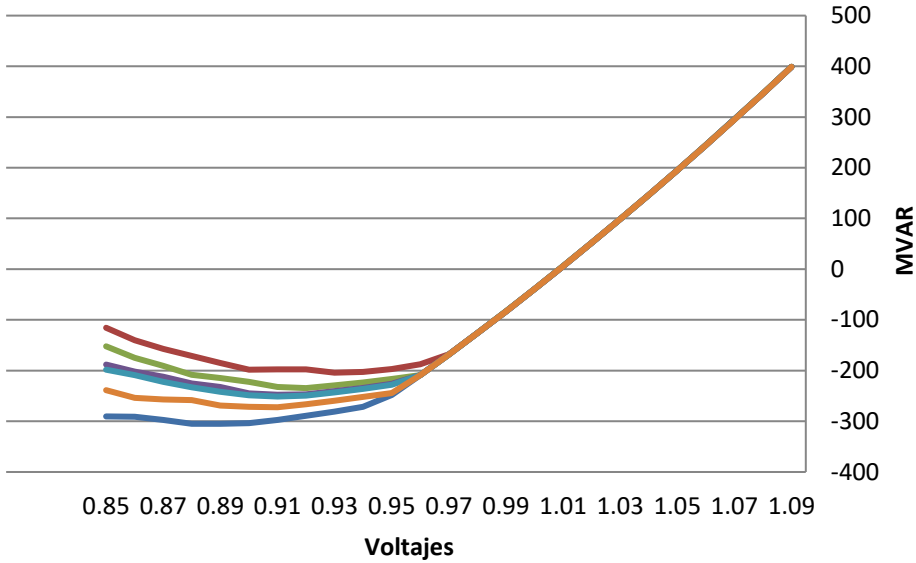


1023-3-2027CA_ModMax_Lluv Nodo: 6011



- BASE CASE
- VLTAGE 6837-6840(1)
- VLTAGE 6460-6713(2C)
- VLTAGE 6005-6830(9A)
- VLTAGE 6005-6596(0A)
- VLTAGE 6008-6240(3C)

1023-3-2027CA_ModMax_Lluv Nodo: 6173

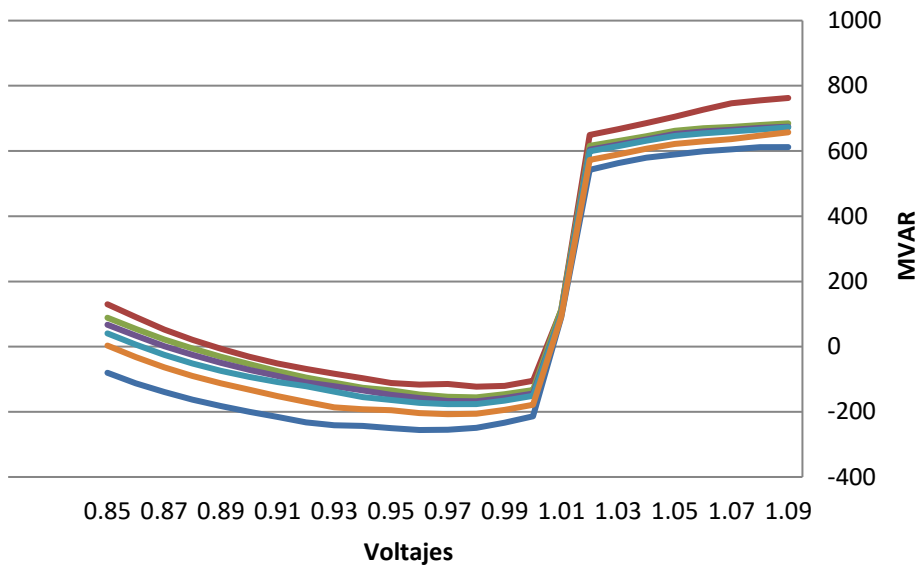


- BASE CASE
- VLTAGE 6460-6713(2C)
- VLTAGE 6005-6830(9A)
- VLTAGE 6005-6596(0A)
- VLTAGE 6008-6240(3C)
- VLTAGE 6837-6840(1)

NODO	BASE CASE	VLTAGE 6837-6840(1)	VLTAGE 6460-6713(2C)	VLTAGE 6005-6830(9A)	VLTAGE 6005-6596(0A)	VLTAGE 6008-6240(3C)
6001	-369.4454956	-235.4876556	-273.5220947	-291.4581909	-295.9230957	-323.3789063
6002	-330.7741699	-214.5491638	-248.0366058	-263.4717712	-267.4666138	-292.006012
6005	-422.0963135	-271.9650269	-311.3282166	-322.9978943	-330.589386	-362.1619568
6009	-745.5032959	-644.8877563	-724.6064453	-728.0354004	-727.4754028	-727.2618408
6011	-844.6060181	-780.4032593	-830.1201782	-832.4225464	-833.9823608	-835.6856079
6173	-304.9743958	-204.1511841	-234.5798798	-247.6742249	-251.244812	-272.3012085

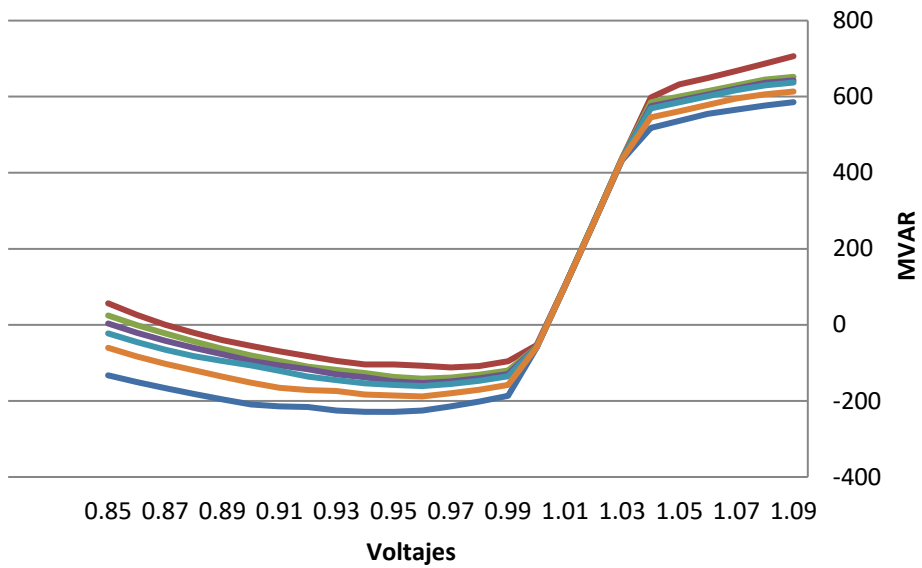
2028 LLUVIOSA

1023-3-2028CA_ModMax_Lluv Nodo: 6001



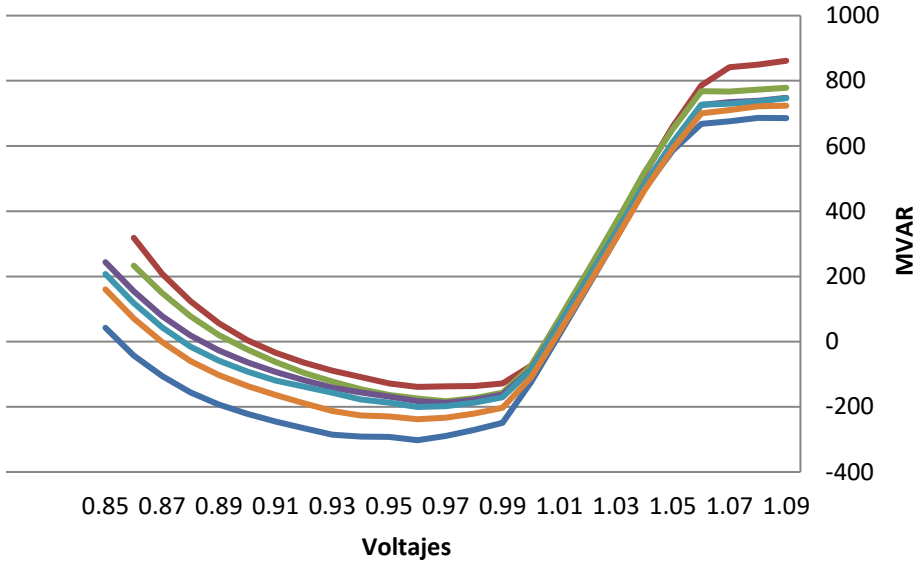
- BASE CASE
- VLTAGE 6460-6713(2C)
- VLTAGE 6005-6596(0A)
- VLTAGE 6837-6840(1)
- VLTAGE 6005-6830(9A)
- VLTAGE 6008-6240(3C)

1023-3-2028CA_ModMax_Lluv Nodo: 6002



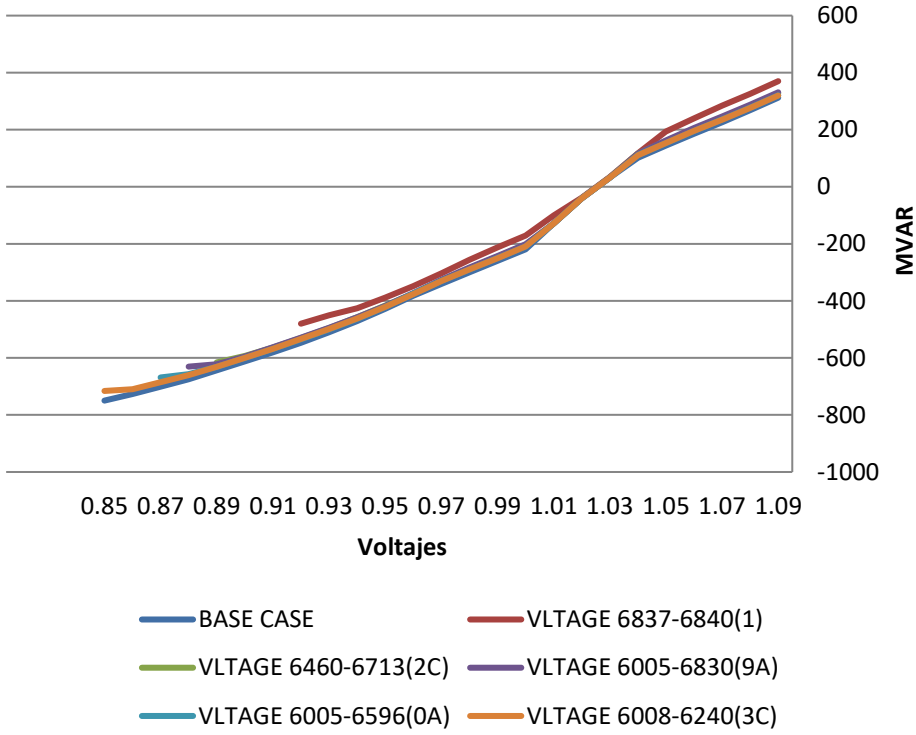
- BASE CASE
- VLTAGE 6460-6713(2C)
- VLTAGE 6005-6596(0A)
- VLTAGE 6837-6840(1)
- VLTAGE 6005-6830(9A)
- VLTAGE 6008-6240(3C)

1023-3-2028CA_ModMax_Lluv Nodo: 6005

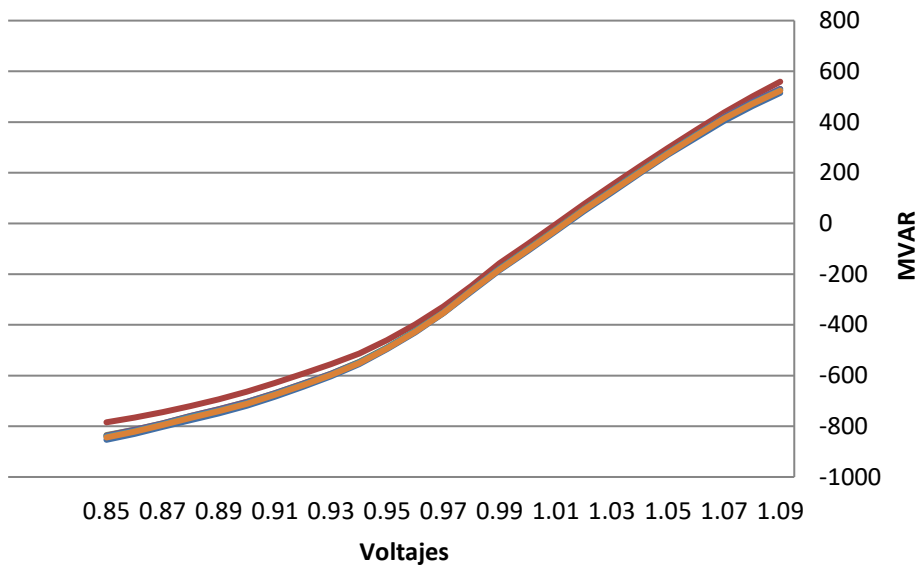


- BASE CASE
- VLTAGE 6460-6713(2C)
- VLTAGE 6005-6830(9A)
- VLTAGE 6005-6596(0A)
- VLTAGE 6008-6240(3C)
- VLTAGE 6837-6840(1)

1023-3-2028CA_ModMax_Lluv Nodo: 6009

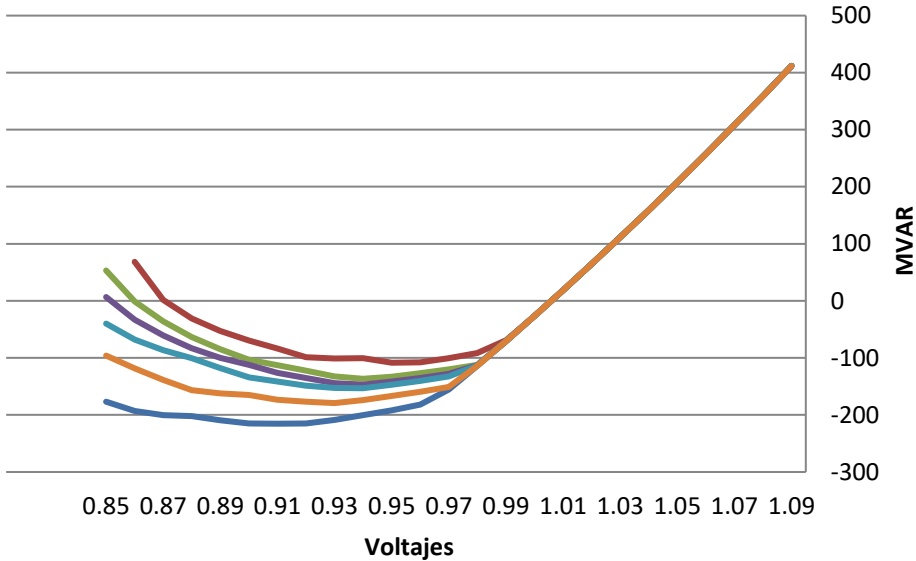


1023-3-2028CA_ModMax_Lluv Nodo: 6011



- BASE CASE
- VLTAGE 6837-6840(1)
- VLTAGE 6460-6713(2C)
- VLTAGE 6005-6830(9A)
- VLTAGE 6005-6596(0A)
- VLTAGE 6008-6240(3C)

1023-3-2028CA_ModMax_Lluv Nodo: 6173

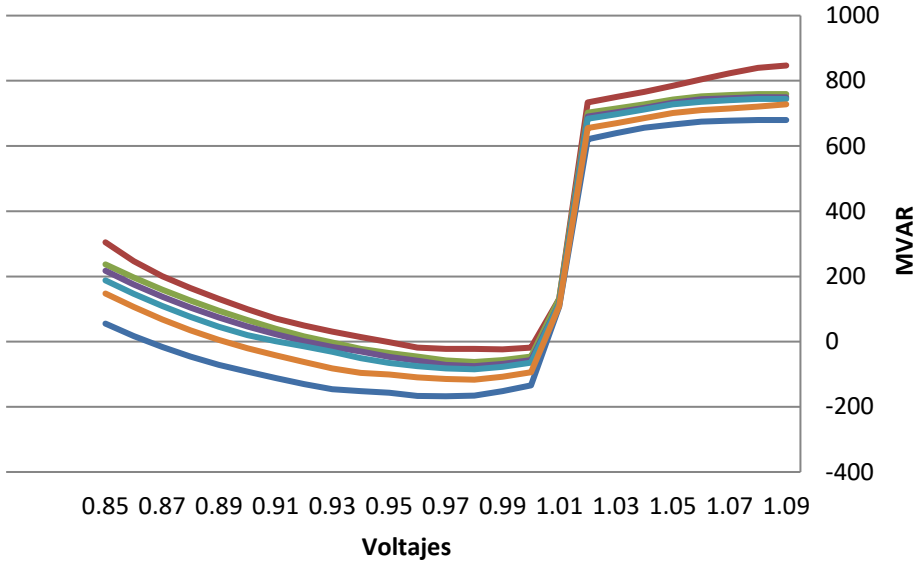


- BASE CASE
- VLTAGE 6460-6713(2C)
- VLTAGE 6005-6830(9A)
- VLTAGE 6005-6596(0A)
- VLTAGE 6837-6840(1)
- VLTAGE 6008-6240(3C)

NODO	BASE CASE	VLTAGE 6837-6840(1)	VLTAGE 6460-6713(2C)	VLTAGE 6005-6830(9A)	VLTAGE 6005-6596(0A)	VLTAGE 6008-6240(3C)
6001	-255.8552094	-122.9588242	-155.7047119	-167.8668671	-176.3183289	-207.3498077
6002	-228.7704773	-111.9168854	-141.556366	-152.969986	-160.9876251	-188.189682
6005	-302.5036926	-138.9366302	-183.0888367	-187.7724457	-200.5795746	-238.1067047
6009	-749.696106	-480.085083	-615.8059692	-630.6159058	-668.5991821	-715.9333496
6011	-853.2826538	-784.3453369	-834.7369385	-836.6063232	-840.7718506	-844.0750122
6173	-215.3638611	-108.4822693	-136.6044159	-146.8439331	-153.1970825	-179.2405243

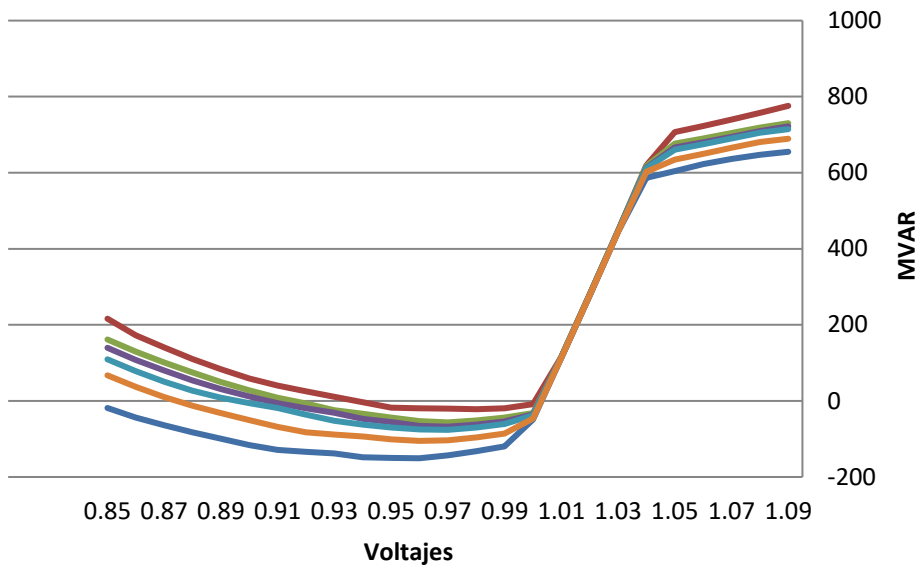
2029 LLUVIOSA

1023-3-2029CA_ModMax_Lluv Nodo: 6001



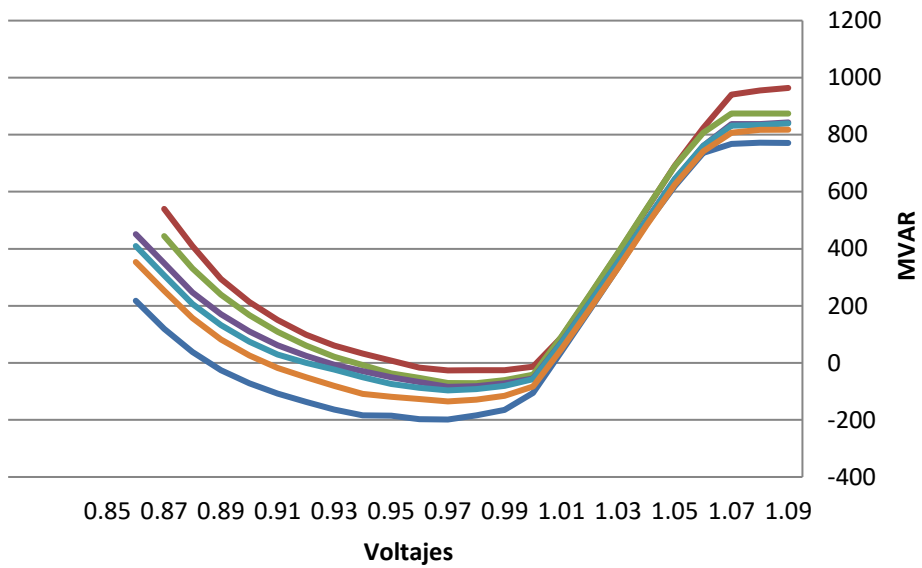
- BASE CASE
- VLTAGE 6460-6713(2C)
- VLTAGE 6005-6596(0A)
- VLTAGE 6837-6840(1)
- VLTAGE 6005-6830(9A)
- VLTAGE 6008-6240(3C)

1023-3-2029CA_ModMax_Lluv Nodo: 6002



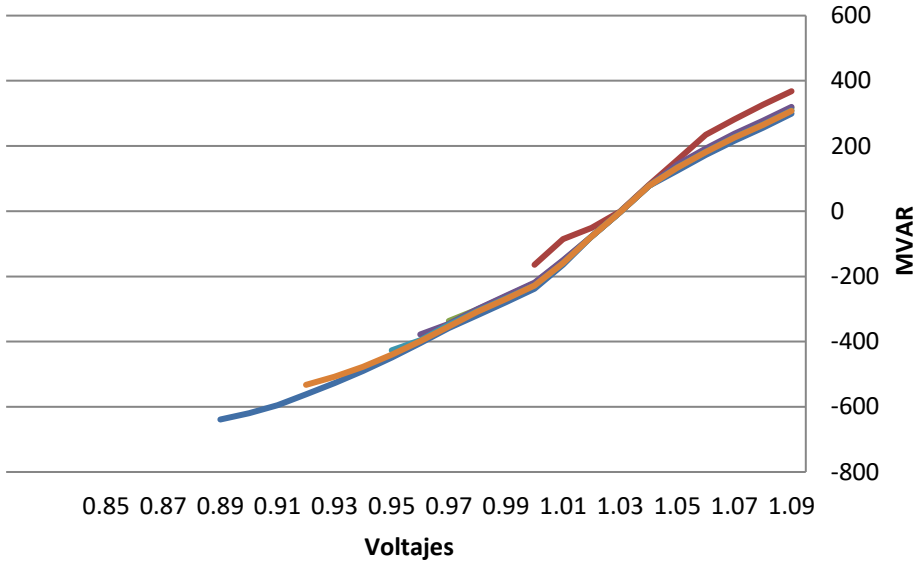
- BASE CASE
- VLTAGE 6460-6713(2C)
- VLTAGE 6005-6596(0A)
- VLTAGE 6837-6840(1)
- VLTAGE 6005-6830(9A)
- VLTAGE 6008-6240(3C)

1023-3-2029CA_ModMax_Lluv Nodo: 6005



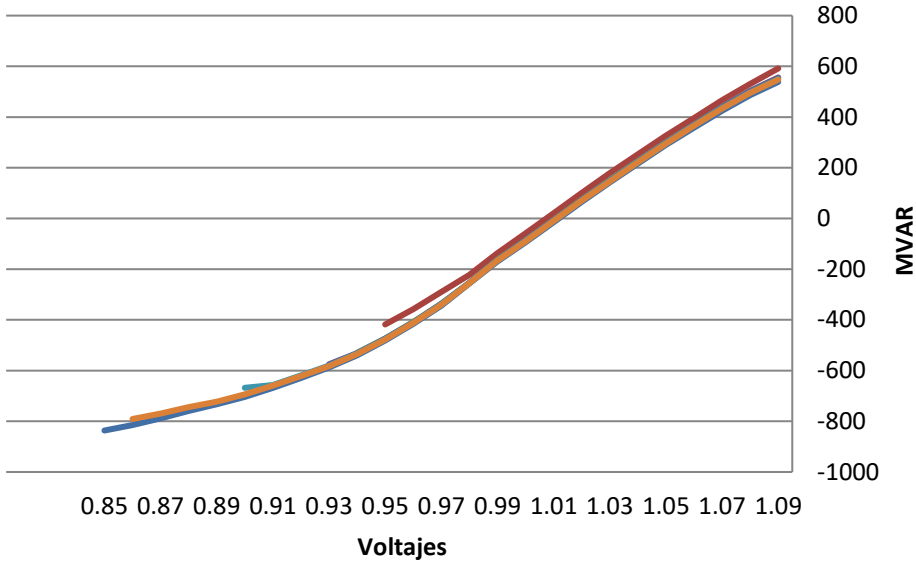
- BASE CASE
- VLTAGE 6837-6840(1)
- VLTAGE 6460-6713(2C)
- VLTAGE 6005-6830(9A)
- VLTAGE 6005-6596(0A)
- VLTAGE 6008-6240(3C)

1023-3-2029CA_ModMax_Lluv Nodo: 6009



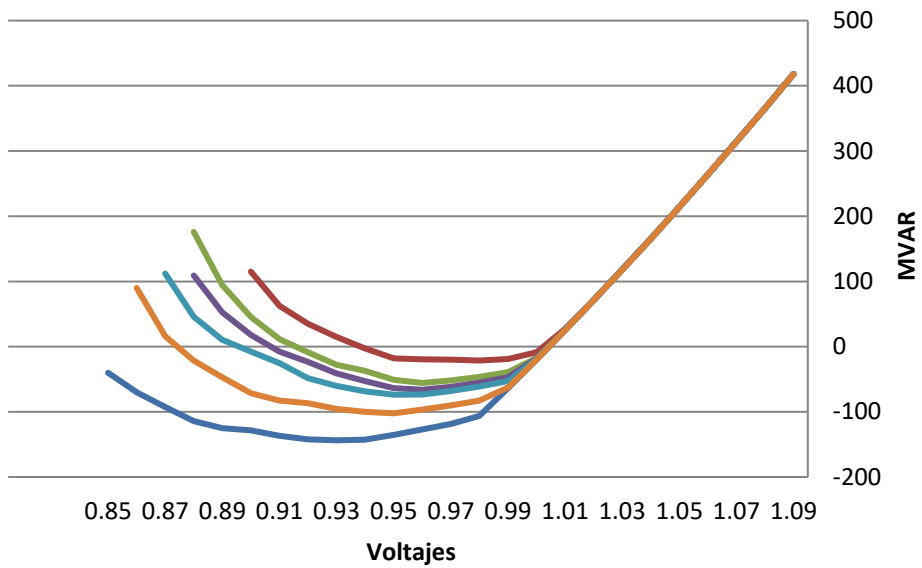
- BASE CASE
- VLTAGE 6837-6840(1)
- VLTAGE 6460-6713(2C)
- VLTAGE 6005-6830(9A)
- VLTAGE 6005-6596(0A)
- VLTAGE 6008-6240(3C)

1023-3-2029CA_ModMax_Lluv Nodo: 6011



- BASE CASE
- VLTAGE 6460-6713(2C)
- VLTAGE 6005-6596(0A)
- VLTAGE 6837-6840(1)
- VLTAGE 6005-6830(9A)
- VLTAGE 6008-6240(3C)

1023-3-2029CA_ModMax_Lluv Nodo: 6173

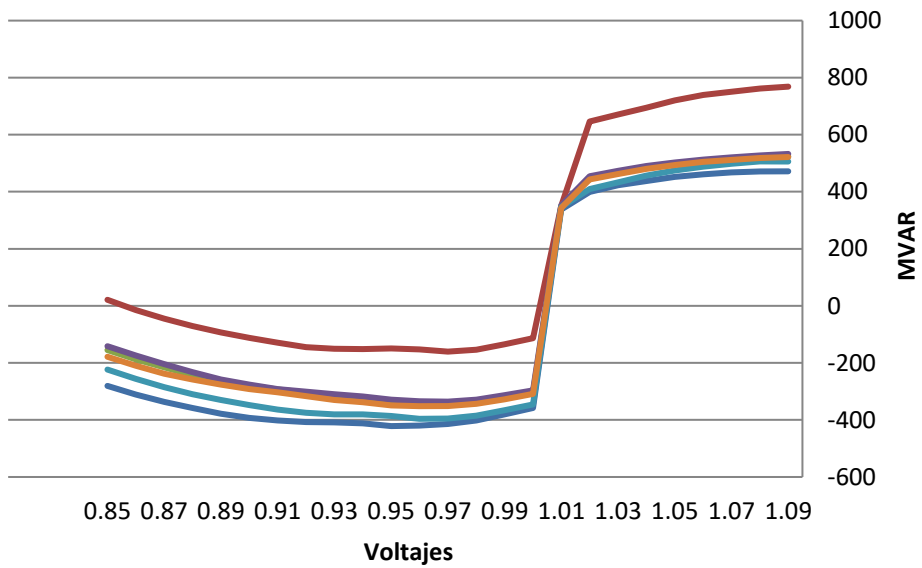


- BASE CASE
- VLTAGE 6460-6713(2C)
- VLTAGE 6005-6830(9A)
- VLTAGE 6005-6596(0A)
- VLTAGE 6837-6840(1)
- VLTAGE 6008-6240(3C)

NODO	BASE CASE	VLTAGE 6837-6840(1)	VLTAGE 6460-6713(2C)	VLTAGE 6005-6830(9A)	VLTAGE 6005-6596(0A)	VLTAGE 6008-6240(3C)
6001	-167.6560211	-23.8336525	-62.56917191	-75.33796692	-84.96781158	-116.8791275
6002	-150.7445526	-21.7781353	-56.38567734	-67.68896484	-76.06643677	-105.1197968
6005	-198.5445099	-26.35089111	-71.20910645	-83.91248322	-96.41281128	-135.0390625
6009	-638.9161377	-164.4020386	-336.763855	-378.1266785	-426.7702026	-532.6310425
6011	-836.4299927	-418.1801453	-530.1034546	-575.1746216	-667.9799194	-790.9581909
6173	-143.7553406	-21.35123825	-55.75954437	-66.18190002	-73.76999664	-102.3287811

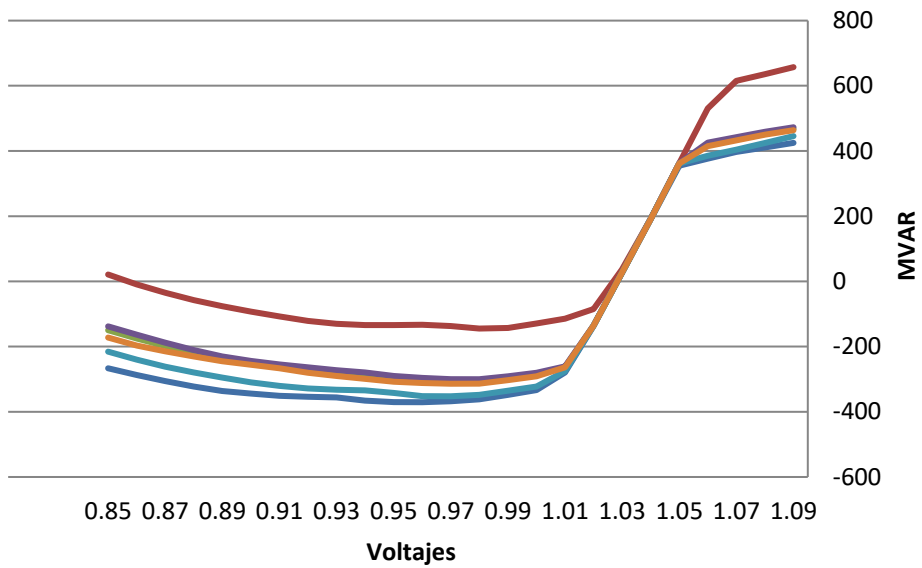
2030 LLUVIOSA

1023-3-2030CA_ModMax_Lluv1- 500kV Nodo: 6001



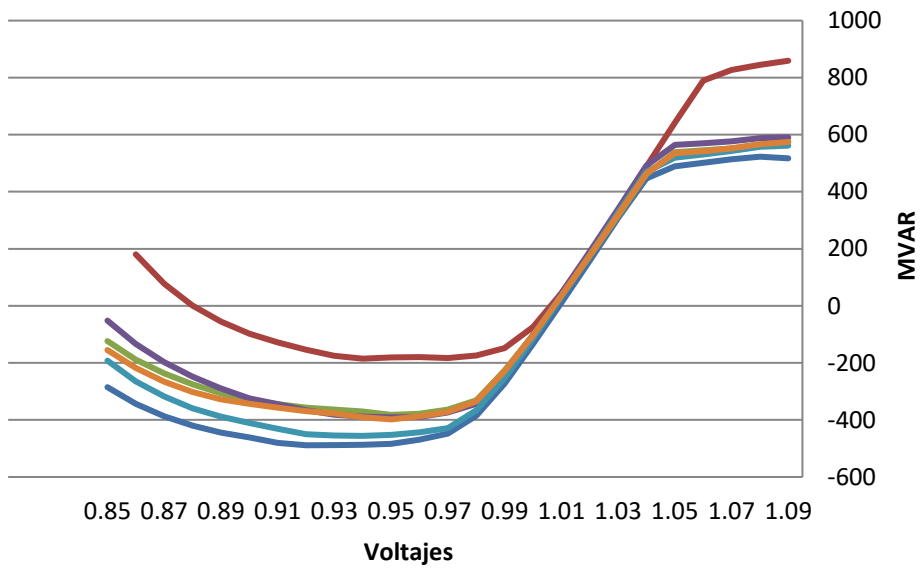
- BASE CASE
- VLTAGE 6005-6830(9A)
- VLTAGE 6096-6837(0A)
- VLTAGE 6836-6839(1)
- VLTAGE 6460-6713(2C)
- VLTAGE 6005-6596(0A)

1023-3-2030CA_ModMax_Lluv1- 500kV Nodo: 6002



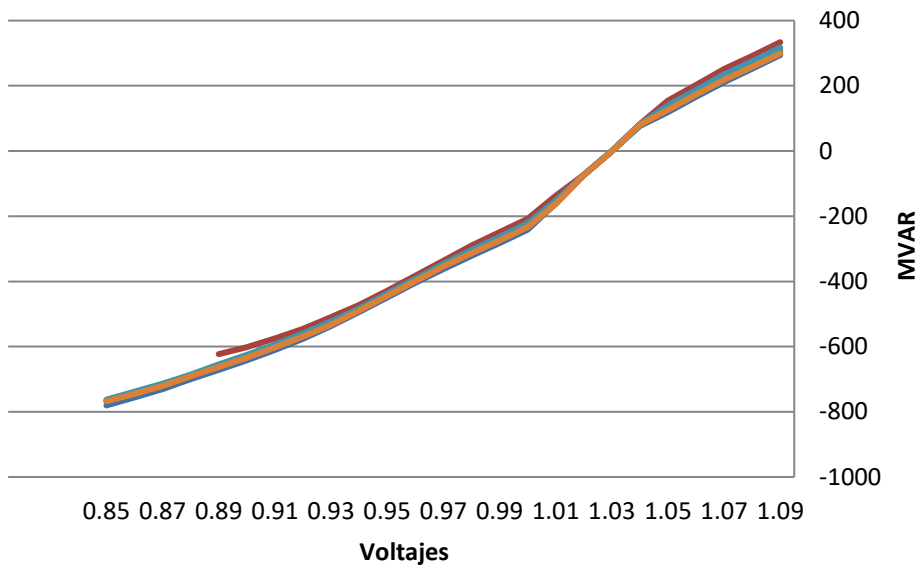
- BASE CASE
- VLTAGE 6005-6830(9A)
- VLTAGE 6096-6837(0A)
- VLTAGE 6836-6839(1)
- VLTAGE 6460-6713(2C)
- VLTAGE 6005-6596(0A)

1023-3-2030CA_ModMax_Lluv1- 500kV Nodo: 6005



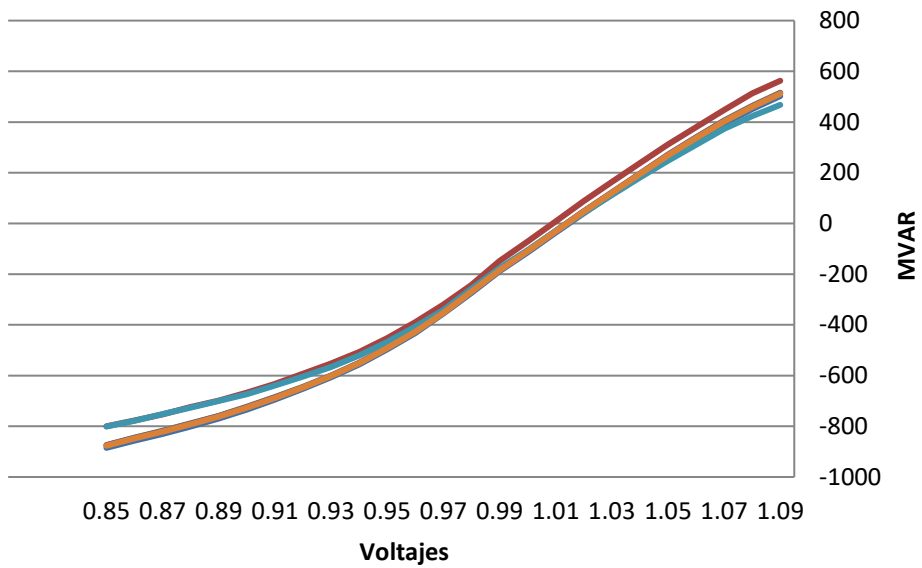
- BASE CASE
- VLTAGE 6005-6830(9A)
- VLTAGE 6096-6837(0A)
- VLTAGE 6836-6839(1)
- VLTAGE 6460-6713(2C)
- VLTAGE 6005-6596(0A)

1023-3-2030CA_ModMax_Lluv1- 500kV Nodo: 6009



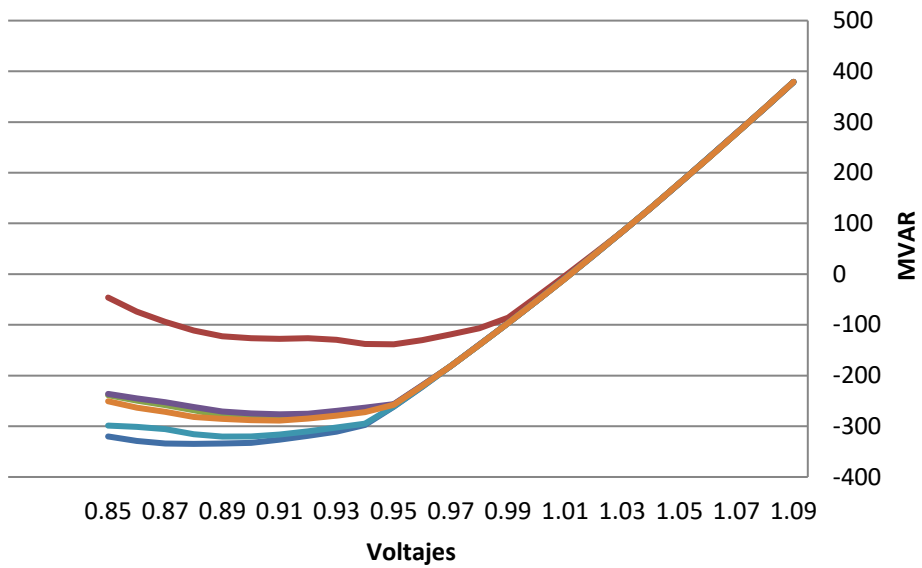
- BASE CASE
- VLTAGE 6836-6839(1)
- VLTAGE 6005-6830(9A)
- VLTAGE 6460-6713(2C)
- VLTAGE 6096-6837(0A)
- VLTAGE 6005-6596(0A)

1023-3-2030CA_ModMax_Lluv1- 500kV Nodo: 6011



- BASE CASE
- VLTAGE 6005-6830(9A)
- VLTAGE 6096-6837(0A)
- VLTAGE 6836-6839(1)
- VLTAGE 6460-6713(2C)
- VLTAGE 6005-6596(0A)

1023-3-2030CA_ModMax_Lluv1- 500kV Nodo: 6173



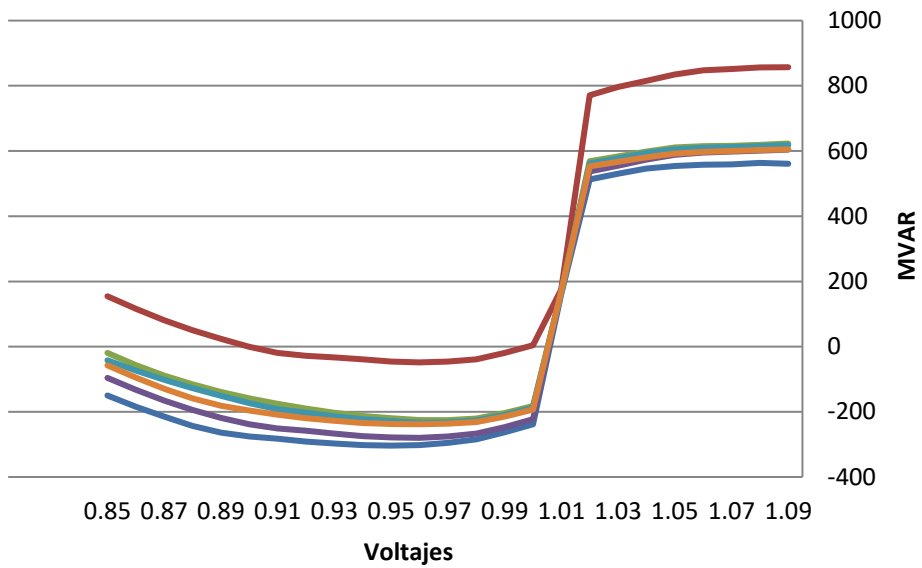
- BASE CASE
- VLTAGE 6005-6830(9A)
- VLTAGE 6096-6837(0A)
- VLTAGE 6836-6839(1)
- VLTAGE 6460-6713(2C)
- VLTAGE 6005-6596(0A)

NODO	BASE CASE	VLTAGE 6836-6839(1)	VLTAGE 6005-6830(9A)	VLTAGE 6460-6713(2C)	VLTAGE 6096-6837(0A)	VLTAGE 6005-6596(0A)
6001	-421.5441589	-160.4449005	-344.6503296	-335.8041992	-396.0135193	-351.7293091
6002	-370.3002625	-144.6459198	-307.8636475	-300.1166687	-352.401062	-313.8984985
6005	-488.7792664	-185.152832	-382.2440491	-390.7684937	-455.872345	-398.0508423
6009	-780.4247437	-623.1646118	-765.3891602	-767.6571045	-762.7825928	-767.7590942
6011	-884.8799438	-800.1090088	-874.2223511	-874.4418945	-800.7360229	-876.7119141
6173	-334.7221985	-138.3720093	-283.6293335	-276.4023743	-320.3148499	-288.7514038

2031 LLUVIOSA

1023-3-2031CA_ModMax_Lluv-500kV

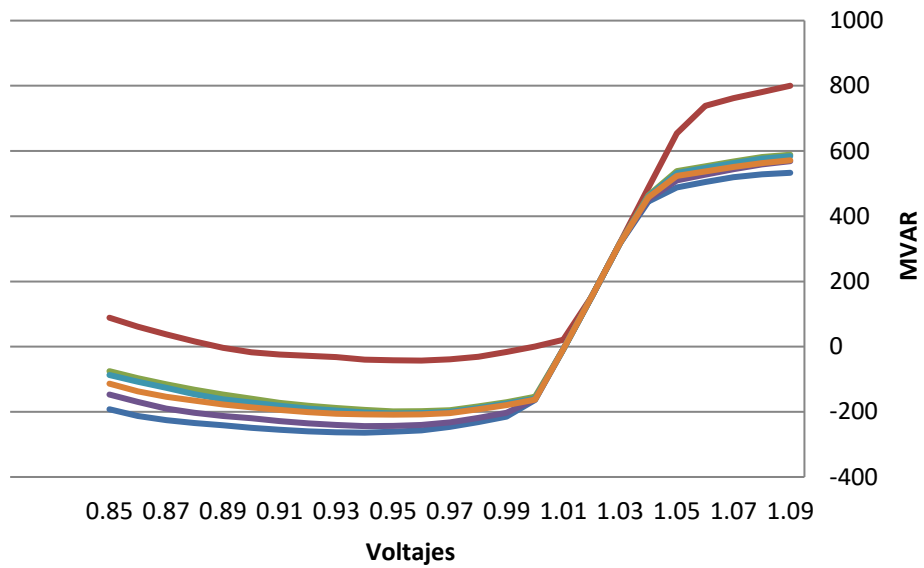
Nodo: 6001



- BASE CASE
- VLTAGE 6005-6830(9A)
- VLTAGE 6096-6837(0A)
- VLTAGE 6005-6596(0A)
- VLTAGE 6713-6741(2C)
- VLTAGE 6836-6839(1)

1023-3-2031CA_ModMax_Lluv-500kV

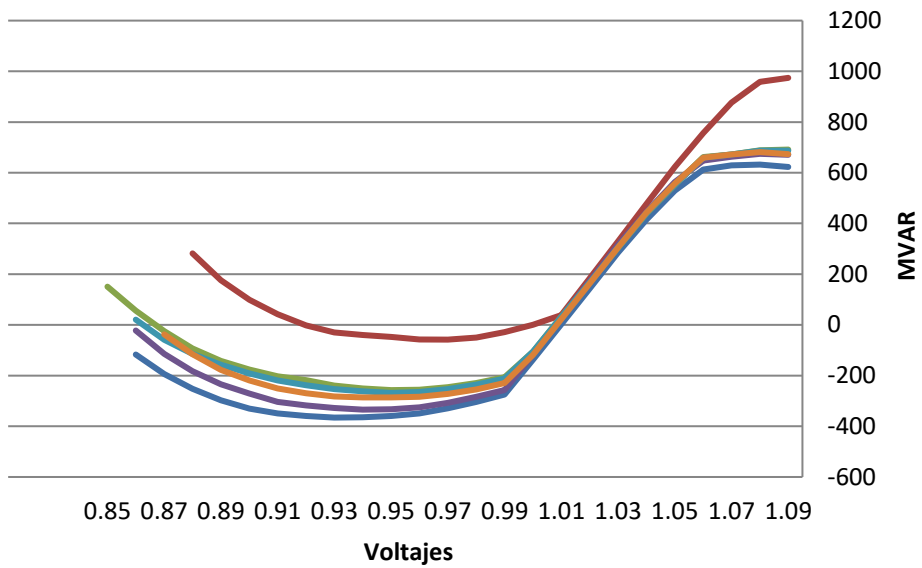
Nodo: 6002



- BASE CASE
- VLTAGE 6005-6830(9A)
- VLTAGE 6096-6837(0A)
- VLTAGE 6005-6596(0A)
- VLTAGE 6713-6741(2C)
- VLTAGE 6836-6839(1)

1023-3-2031CA_ModMax_Lluv-500kV

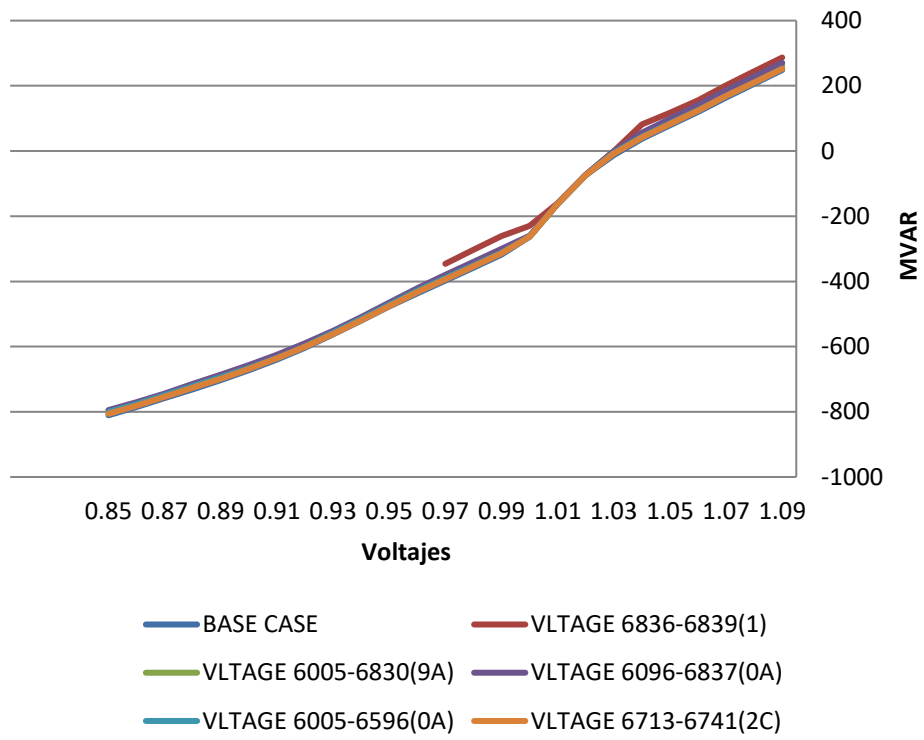
Nodo: 6005



- BASE CASE
- VLTAGE 6005-6830(9A)
- VLTAGE 6096-6837(0A)
- VLTAGE 6005-6596(0A)
- VLTAGE 6713-6741(2C)
- VLTAGE 6836-6839(1)

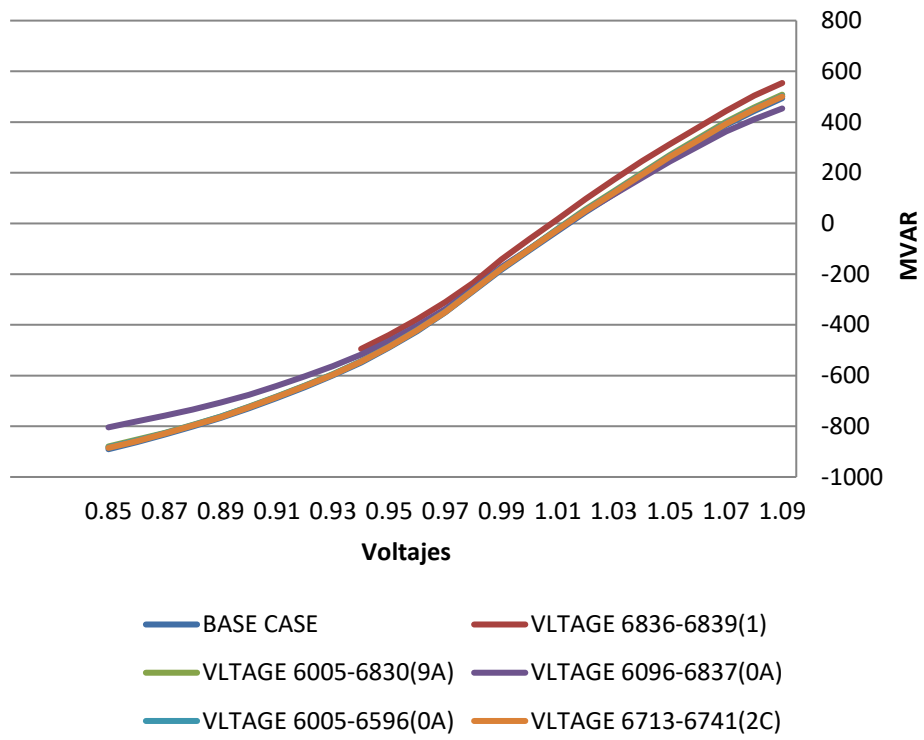
1023-3-2031CA_ModMax_Lluv-500kV

Nodo: 6009



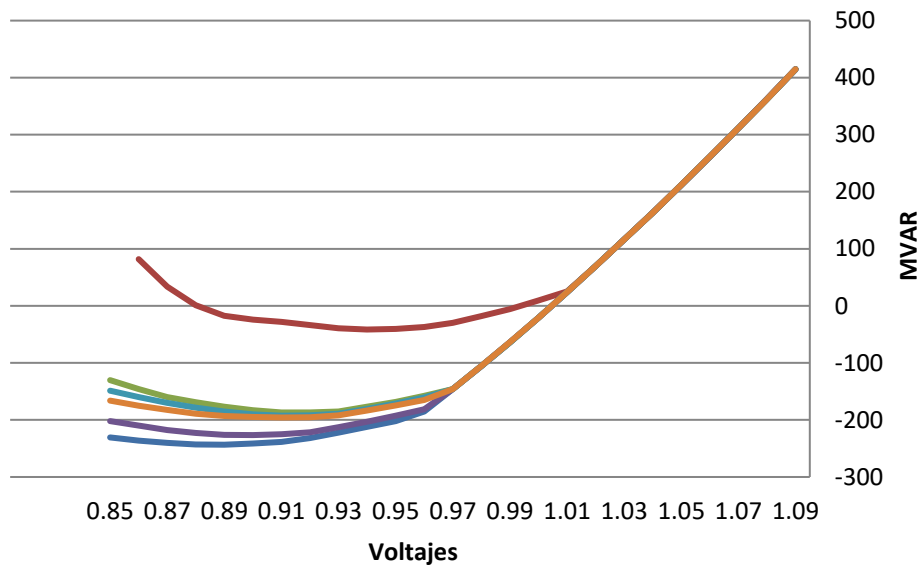
1023-3-2031CA_ModMax_Lluv-500kV

Nodo: 6011



1023-3-2031CA_ModMax_Lluv-500kV

Nodo: 6173

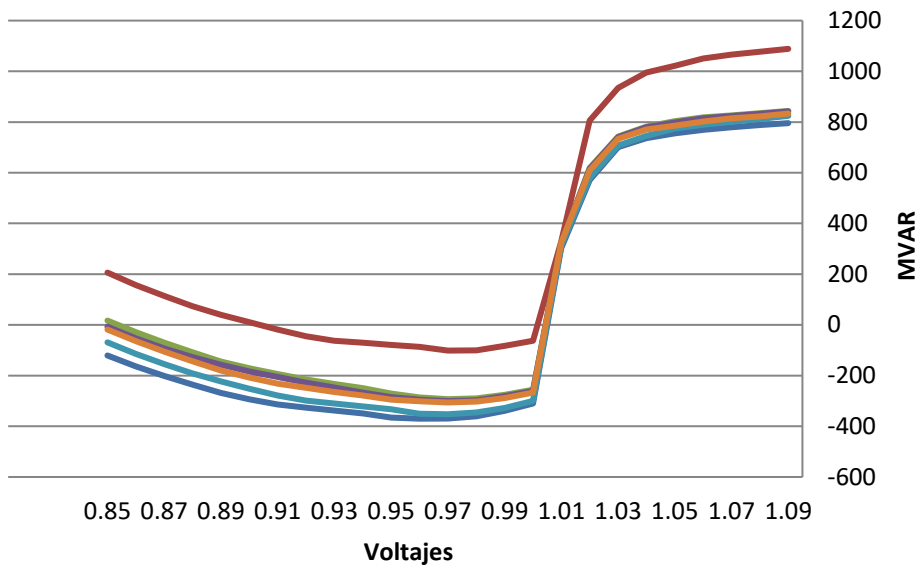


- BASE CASE
- VLTAGE 6005-6830(9A)
- VLTAGE 6005-6596(0A)
- VLTAGE 6836-6839(1)
- VLTAGE 6096-6837(0A)
- VLTAGE 6713-6741(2C)

NODO	BASE CASE	VLTAGE 6836-6839(1)	VLTAGE 6005-6830(9A)	VLTAGE 6096-6837(0A)	VLTAGE 6005-6596(0A)	VLTAGE 6713-6741(2C)
6001	-303.7294006	-48.4360466	-225.4084167	-279.9682312	-233.5349121	-238.1112976
6002	-264.0785828	-42.94372177	-198.7911224	-243.9265442	-205.2270203	-208.7423401
6005	-365.6809082	-58.16309357	-257.3571777	-334.3276672	-268.4261169	-286.173645
6009	-810.7350464	-346.0815735	-798.4835815	-794.7962036	-800.7566528	-806.1815186
6011	-890.4886475	-494.94104	-879.6403809	-804.244873	-882.7548218	-885.1077881
6173	-243.4013062	-41.51372147	-186.8488312	-226.5565796	-192.4972839	-195.6672363

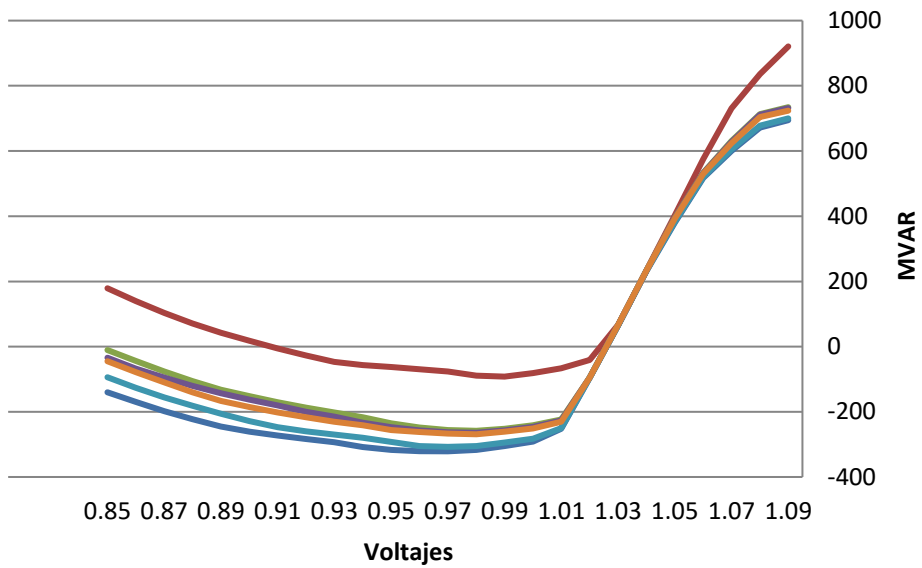
2033 LLUVIOSA

1023-3-2033CA_ModMax_Lluv- 500kV+STC Nodo: 6001



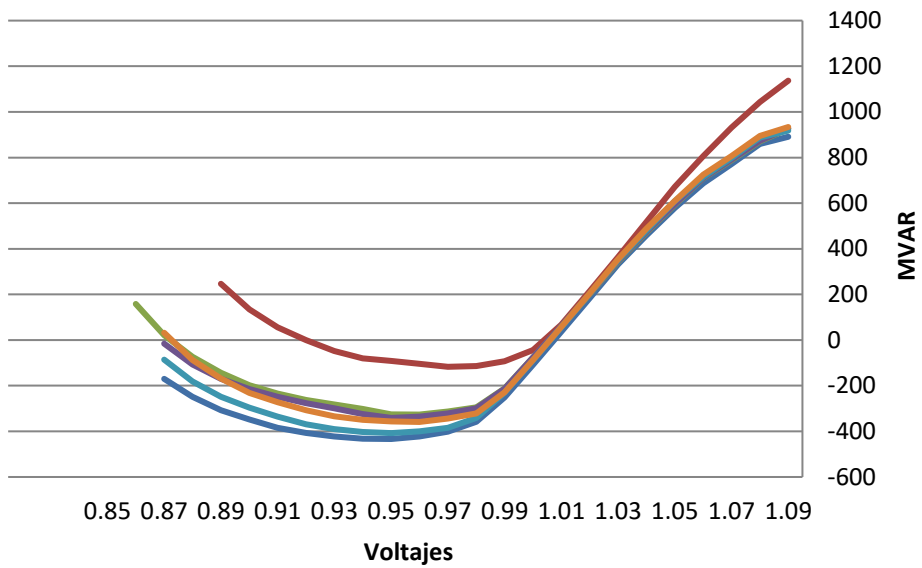
- BASE CASE
- VLTAGE 6005-6830(9A)
- VLTAGE 6005-6596(0A)
- VLTAGE 6096-6837(0A)
- VLTAGE 6713-6741(2C)
- VLTAGE 6836-6839(1)

1023-3-2033CA_ModMax_Lluv- 500kV+STC Nodo: 6002



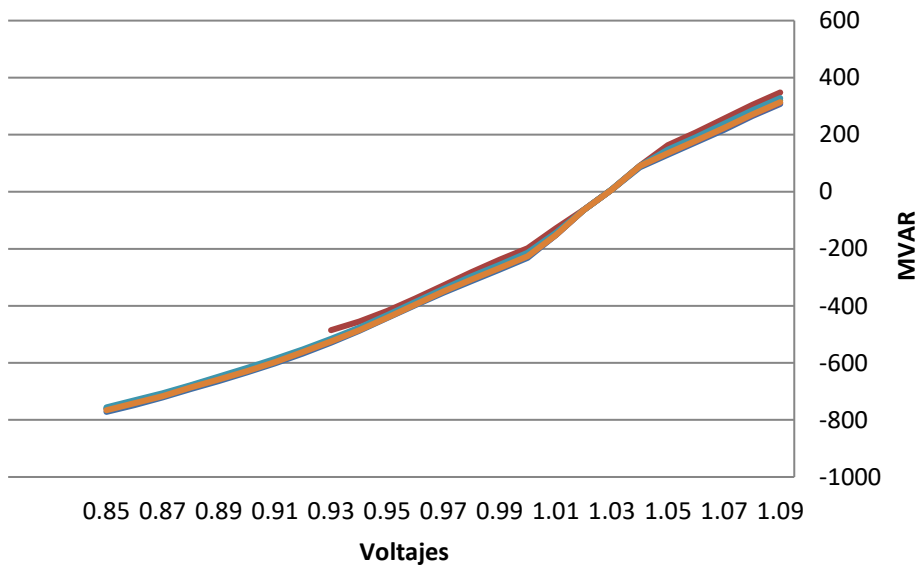
- BASE CASE
- VLTAGE 6005-6830(9A)
- VLTAGE 6005-6596(0A)
- VLTAGE 6096-6837(0A)
- VLTAGE 6713-6741(2C)
- VLTAGE 6836-6839(1)

1023-3-2033CA_ModMax_Lluv- 500kV+STC Nodo: 6005



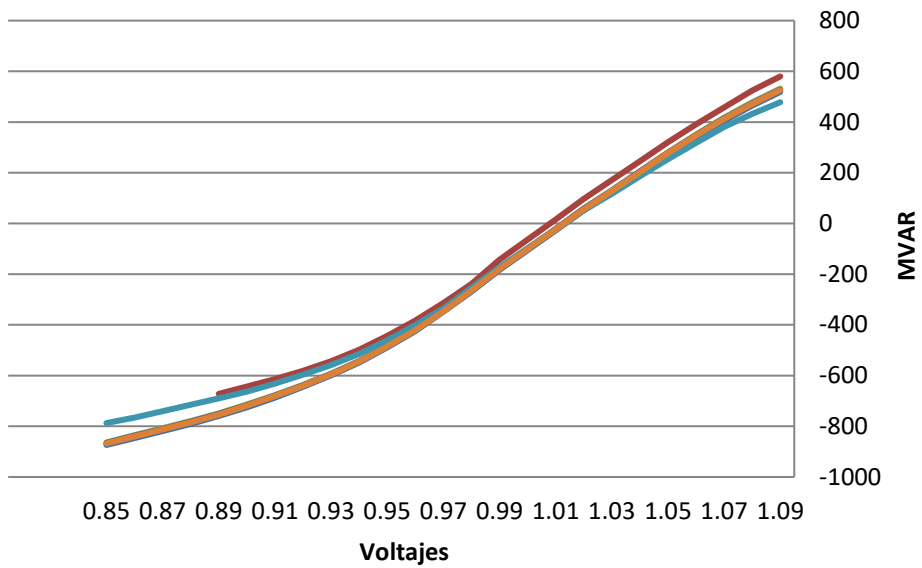
- BASE CASE
- VLTAGE 6005-6830(9A)
- VLTAGE 6096-6837(0A)
- VLTAGE 6836-6839(1)
- VLTAGE 6005-6596(0A)
- VLTAGE 6713-6741(2C)

1023-3-2033CA_ModMax_Lluv- 500kV+STC Nodo: 6009



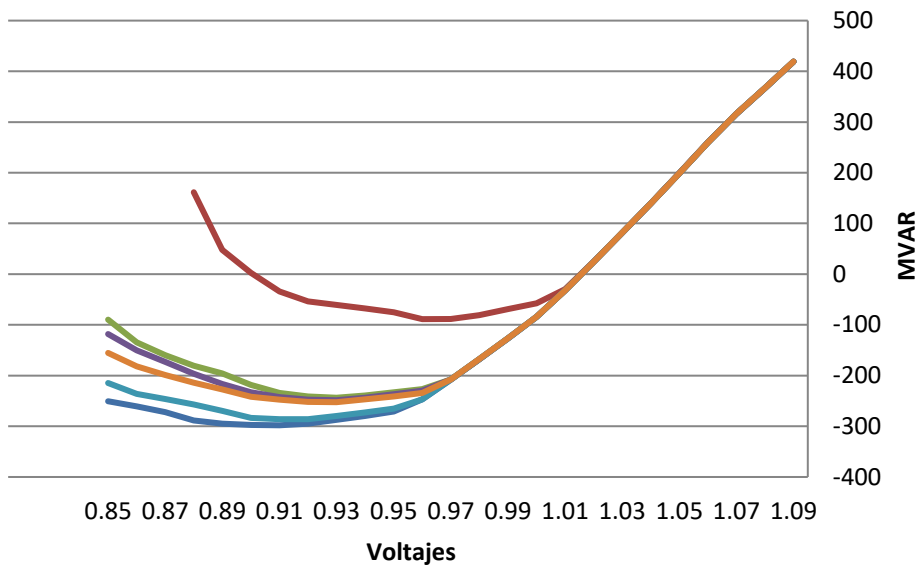
- BASE CASE
- VLTAGE 6836-6839(1)
- VLTAGE 6005-6830(9A)
- VLTAGE 6005-6596(0A)
- VLTAGE 6096-6837(0A)
- VLTAGE 6713-6741(2C)

1023-3-2033CA_ModMax_Lluv- 500kV+STC Nodo: 6011



- BASE CASE
- VLTAGE 6005-6830(9A)
- VLTAGE 6096-6837(0A)
- VLTAGE 6836-6839(1)
- VLTAGE 6005-6596(0A)
- VLTAGE 6713-6741(2C)

1023-3-2033CA_ModMax_Lluv- 500kV+STC Nodo: 6173

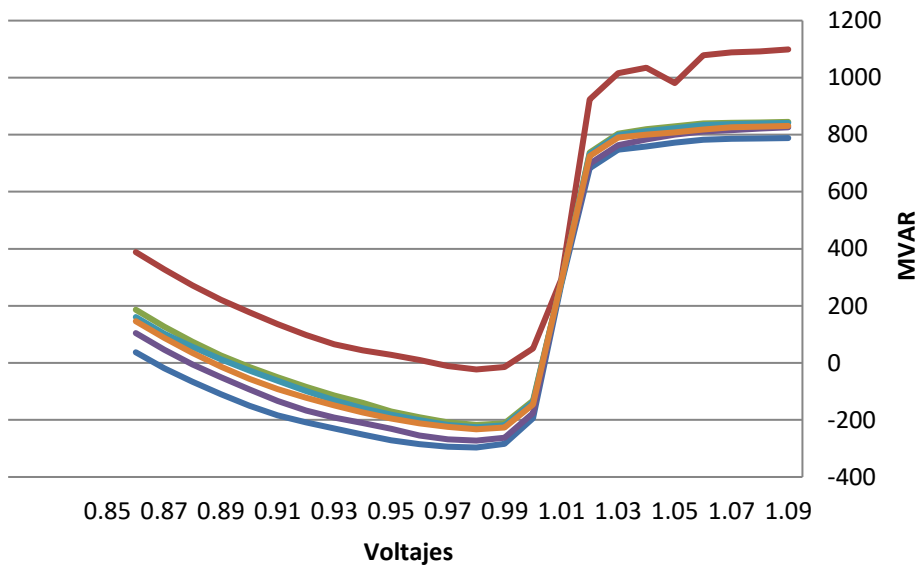


- BASE CASE
- VLTAGE 6836-6839(1)
- VLTAGE 6005-6830(9A)
- VLTAGE 6005-6596(0A)
- VLTAGE 6096-6837(0A)
- VLTAGE 6713-6741(2C)

NODO	BASE CASE	VLTAGE 6836-6839(1)	VLTAGE 6005-6830(9A)	VLTAGE 6005-6596(0A)	VLTAGE 6096-6837(0A)	VLTAGE 6713-6741(2C)
6001	-370.0559082	-101.3793945	-293.0557861	-300.8046875	-352.5388489	-306.0562134
6002	-321.288147	-92.10289001	-258.2690125	-264.2497253	-307.4819641	-268.9466248
6005	-433.5713501	-117.0951614	-326.4178162	-341.0516357	-407.6800232	-358.8547058
6009	-771.8225708	-485.2796631	-759.1929932	-761.475769	-755.9005737	-765.9411011
6011	-873.6348267	-672.3025513	-863.6835327	-865.9703369	-787.2921753	-867.7198486
6173	-298.0458069	-88.67362213	-243.7149811	-248.6280212	-285.9907532	-252.5102386

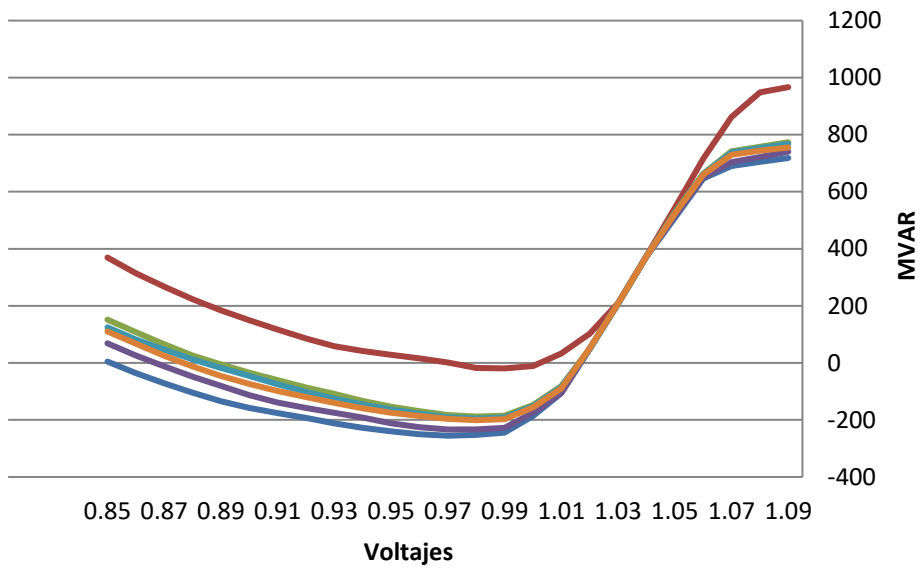
2035 LLUVIOSA

1023-3-2035CA_ModMax_Lluv- 500kV+STC Nodo: 6001



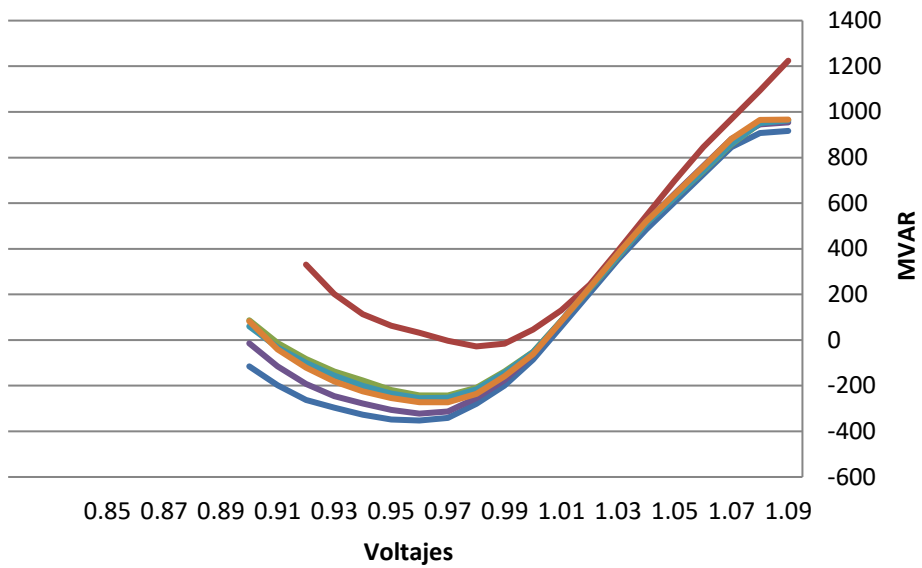
- BASE CASE
- VLTAGE 6005-6830(9A)
- VLTAGE 6096-6837(0A)
- VLTAGE 6005-6596(0A)
- VLTAGE 6713-6741(2C)
- VLTAGE 6836-6839(1)

1023-3-2035CA_ModMax_Lluv- 500kV+STC Nodo: 6002



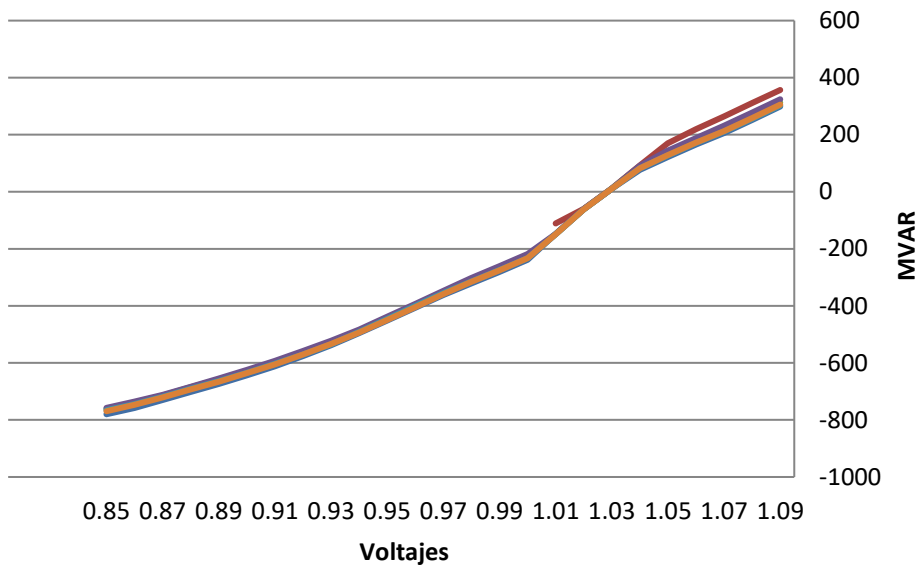
- BASE CASE
- VLTAGE 6005-6830(9A)
- VLTAGE 6096-6837(0A)
- VLTAGE 6005-6596(0A)
- VLTAGE 6713-6741(2C)
- VLTAGE 6836-6839(1)

1023-3-2035CA_ModMax_Lluv- 500kV+STC Nodo: 6005



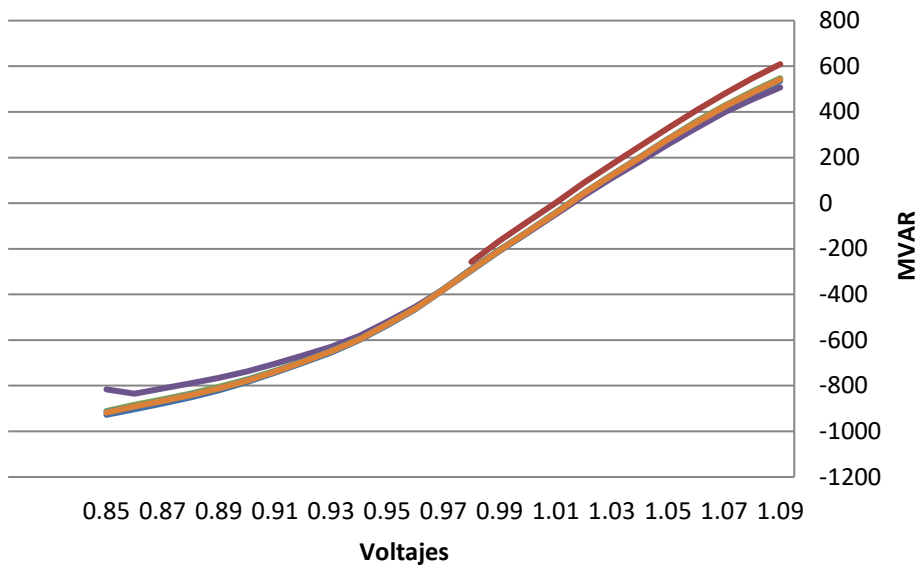
- BASE CASE
- VLTAGE 6005-6830(9A)
- VLTAGE 6096-6837(0A)
- VLTAGE 6005-6596(0A)
- VLTAGE 6713-6741(2C)
- VLTAGE 6836-6839(1)

1023-3-2035CA_ModMax_Lluv- 500kV+STC Nodo: 6009



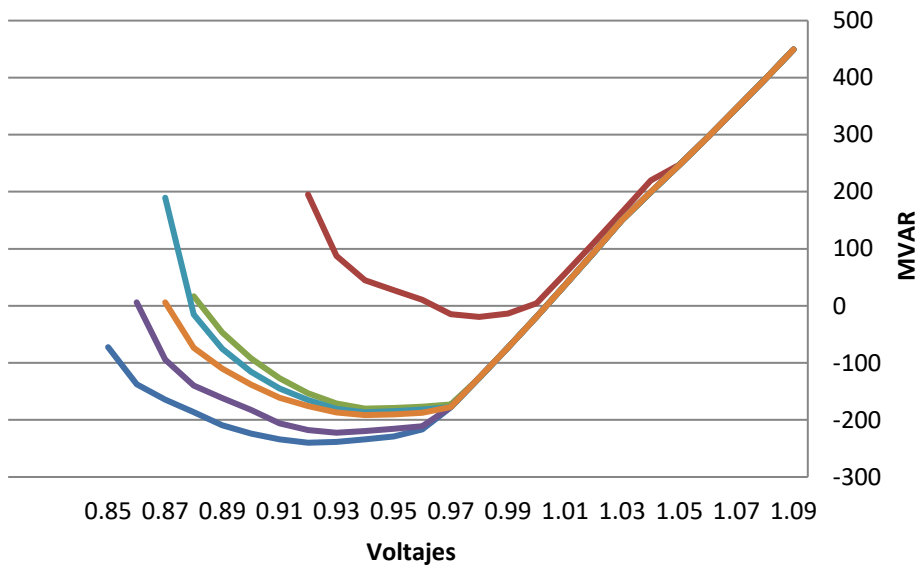
- BASE CASE
- VLTAGE 6005-6830(9A)
- VLTAGE 6096-6837(0A)
- VLTAGE 6005-6596(0A)
- VLTAGE 6713-6741(2C)
- VLTAGE 6836-6839(1)

1023-3-2035CA_ModMax_Lluv- 500kV+STC Nodo: 6011



- BASE CASE
- VLTAGE 6005-6830(9A)
- VLTAGE 6096-6837(0A)
- VLTAGE 6005-6596(0A)
- VLTAGE 6713-6741(2C)
- VLTAGE 6836-6839(1)

1023-3-2035CA_ModMax_Lluv- 500kV+STC Nodo: 6173

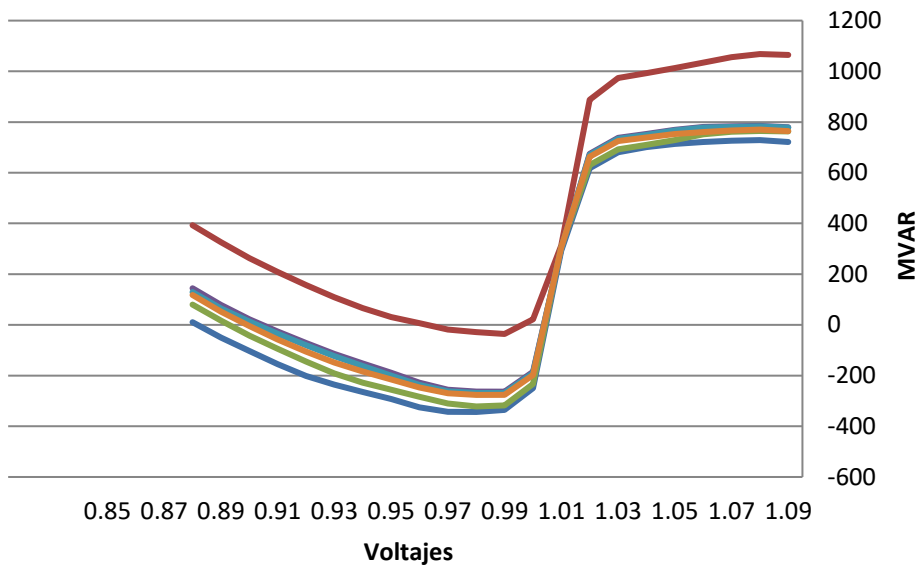


- BASE CASE
- VLTAGE 6005-6830(9A)
- VLTAGE 6096-6837(0A)
- VLTAGE 6005-6596(0A)
- VLTAGE 6836-6839(1)
- VLTAGE 6713-6741(2C)

NODO	BASE CASE	VLTAGE 6836-6839(1)	VLTAGE 6005-6830(9A)	VLTAGE 6096-6837(0A)	VLTAGE 6005-6596(0A)	VLTAGE 6713-6741(2C)
6001	-296.633606	-23.07023239	-217.3314819	-272.4220886	-225.5452576	-232.8059235
6002	-255.3103485	-19.19473076	-188.2006683	-233.4135284	-195.0587921	-200.7975311
6005	-352.5745239	-27.74284554	-242.5552826	-322.2244263	-254.6907196	-272.5401306
6009	-780.0424805	-111.1089249	-761.2294922	-757.6438599	-765.8462524	-769.3947754
6011	-927.435791	-257.3461304	-910.8598022	-835.093811	-914.2908325	-918.0575562
6173	-239.9708099	-19.42783165	-180.1352844	-222.4280853	-186.5968628	-191.470108

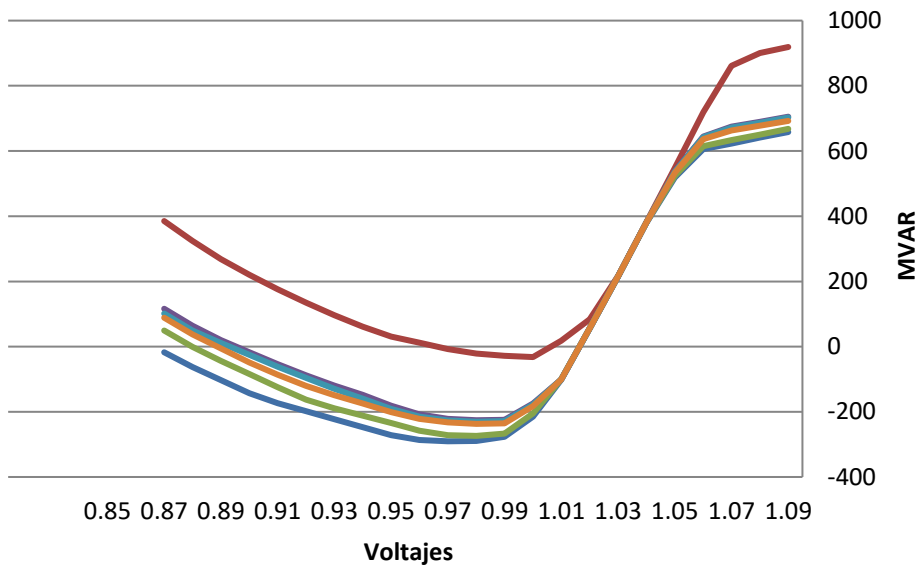
2037 LLUVIOSA

1023-3-2037CA_ModMax_Lluv- 500kV+STC Nodo: 6001



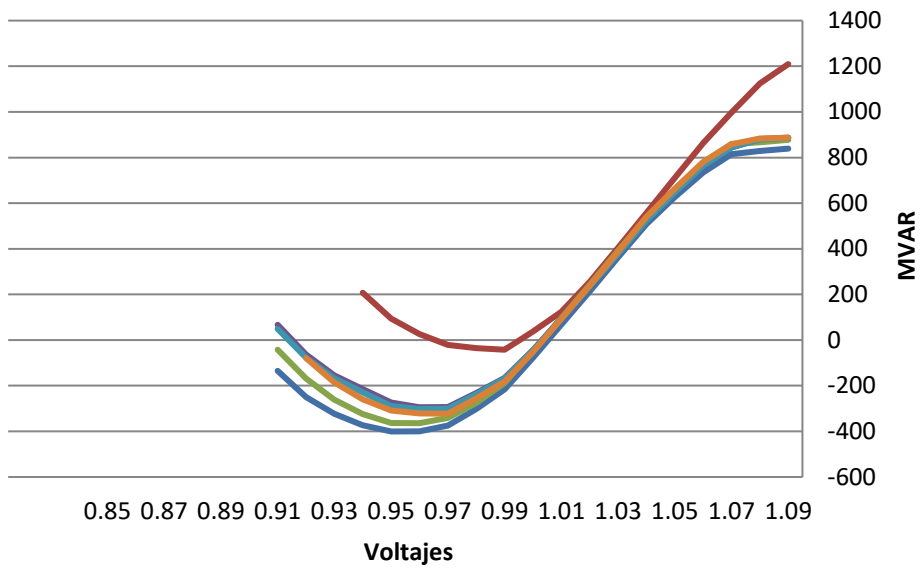
- BASE CASE
- VLTAGE 6096-6837(0A)
- VLTAGE 6005-6596(0A)
- VLTAGE 6836-6839(1)
- VLTAGE 6005-6830(9A)
- VLTAGE 6713-6741(2C)

1023-3-2037CA_ModMax_Lluv- 500kV+STC Nodo: 6002



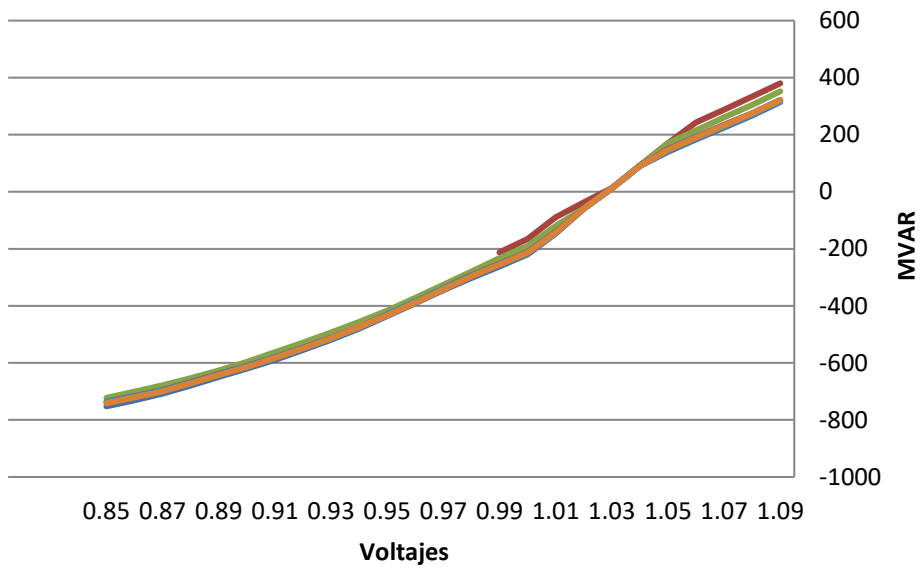
- BASE CASE
- VLTAGE 6836-6839(1)
- VLTAGE 6096-6837(0A)
- VLTAGE 6005-6830(9A)
- VLTAGE 6005-6596(0A)
- VLTAGE 6713-6741(2C)

1023-3-2037CA_ModMax_Lluv- 500kV+STC Nodo: 6005



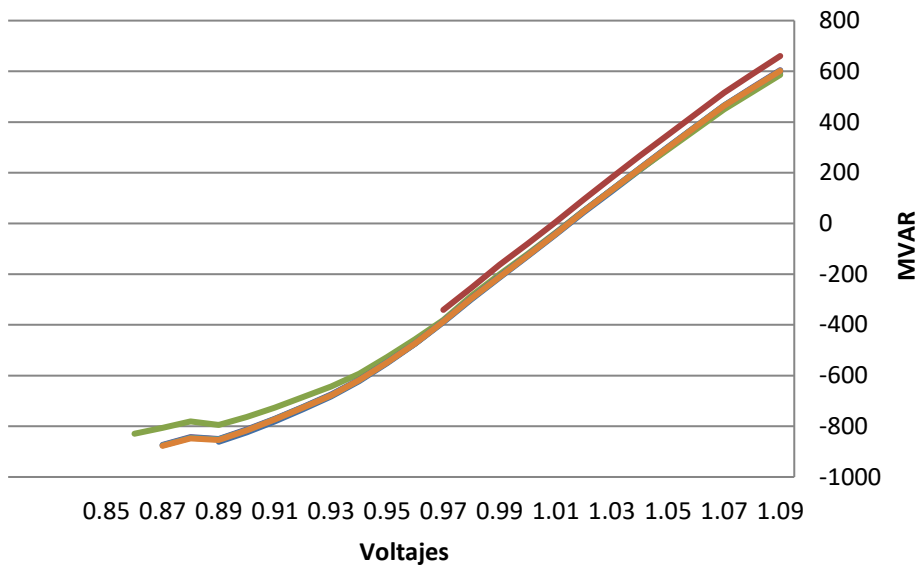
- BASE CASE
- VLTAGE 6096-6837(0A)
- VLTAGE 6005-6596(0A)
- VLTAGE 6836-6839(1)
- VLTAGE 6005-6830(9A)
- VLTAGE 6713-6741(2C)

1023-3-2037CA_ModMax_Lluv- 500kV+STC Nodo: 6009



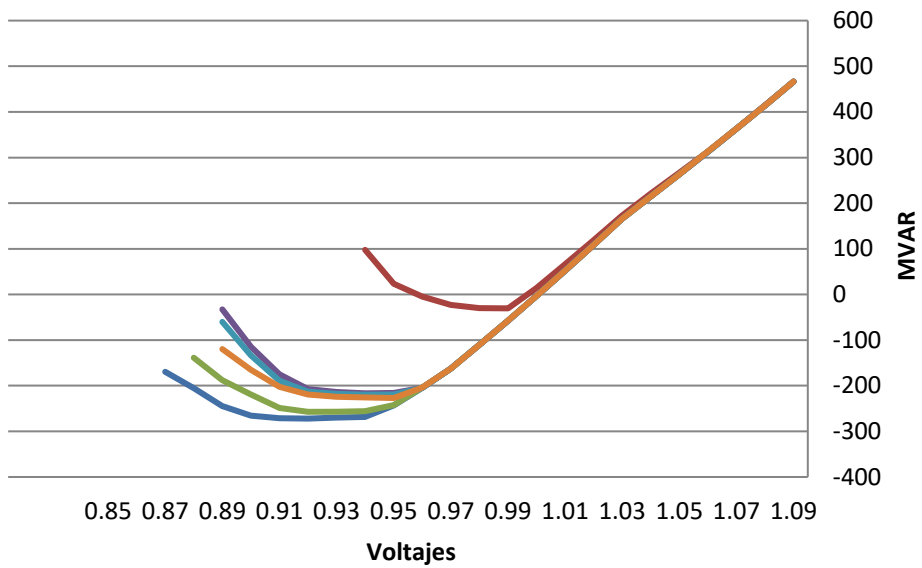
- BASE CASE
- VLTAGE 6836-6839(1)
- VLTAGE 6096-6837(0A)
- VLTAGE 6005-6830(9A)
- VLTAGE 6005-6596(0A)
- VLTAGE 6713-6741(2C)

1023-3-2037CA_ModMax_Lluv- 500kV+STC Nodo: 6011



- BASE CASE
- VLTAGE 6096-6837(0A)
- VLTAGE 6005-6596(0A)
- VLTAGE 6836-6839(1)
- VLTAGE 6005-6830(9A)
- VLTAGE 6713-6741(2C)

1023-3-2037CA_ModMax_Lluv- 500kV+STC Nodo: 6173



- BASE CASE
- VLTAGE 6096-6837(0A)
- VLTAGE 6005-6596(0A)
- VLTAGE 6836-6839(1)
- VLTAGE 6005-6830(9A)
- VLTAGE 6713-6741(2C)

NODO	BASE CASE	VLTAGE 6836-6839(1)	VLTAGE 6096-6837(0A)	VLTAGE 6005-6830(9A)	VLTAGE 6005-6596(0A)	VLTAGE 6713-6741(2C)
6001	-343.5245361	-35.88352966	-321.8670654	-263.0989685	-268.8589783	-276.3103333
6002	-290.5300293	-32.12562943	-273.916687	-225.8649902	-230.5371246	-237.084671
6005	-400.5977173	-42.33467102	-364.1988831	-294.2824402	-302.1192017	-322.7417603
6009	-752.2316284	-212.6052094	-722.6436157	-736.2633057	-737.6182861	-741.7937012
6011	-860.9801025	-341.0059814	-829.3619385	-873.5599365	-875.1402588	-877.105835
6173	-272.0280457	-30.47117233	-257.0060425	-216.661911	-219.7547607	-226.9334259