

**PESIN  
2023**

---

**TOMO III**

# **ANEXO V**

---

**ANÁLISIS QV**

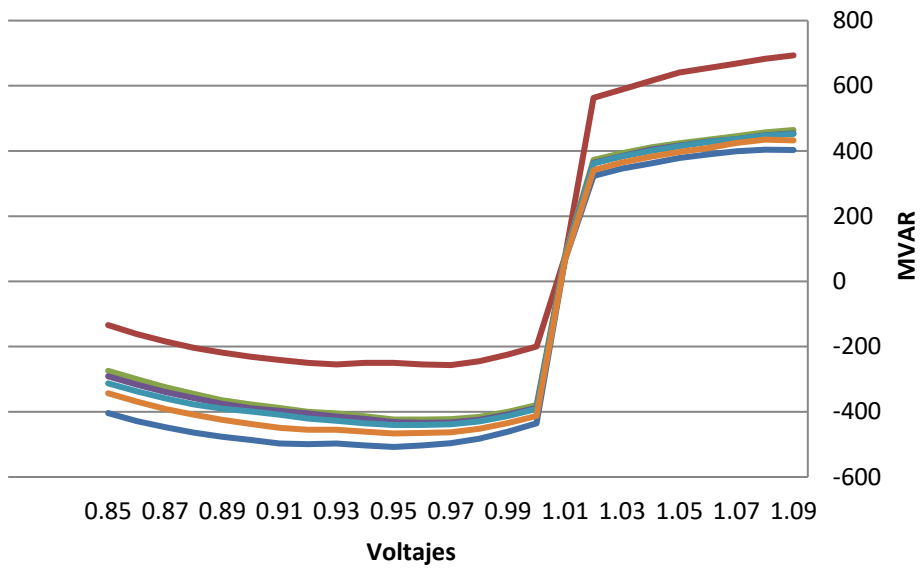
**LARGO PLAZO**

(CUARTA LÍNEA EN 500KV)

**2028 LLUVIOSA**

# 1023-3-2028CA\_ModMax\_Lluv-500kV

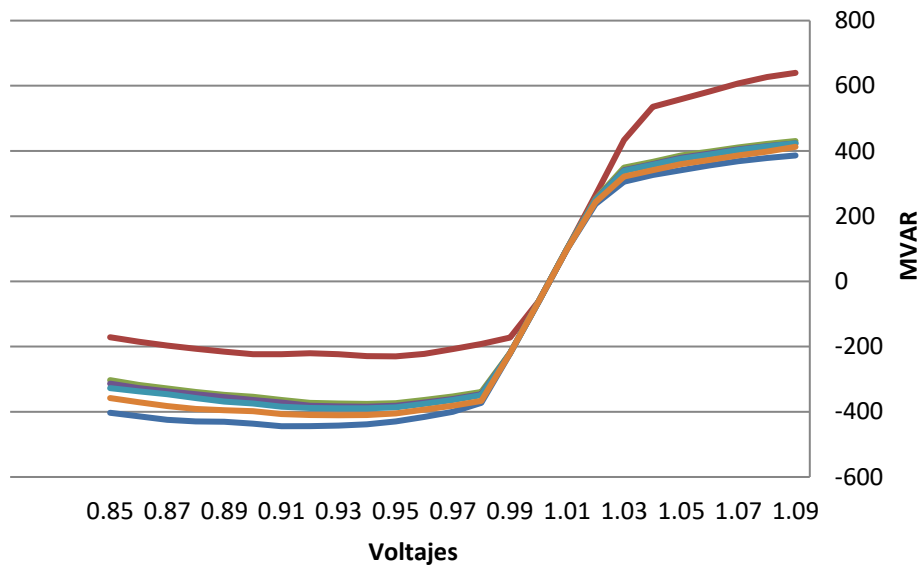
## Nodo: 6001



- BASE CASE
- VLTAGE 6460-6713(2C)
- VLTAGE 6005-6830(9A)
- VLTAGE 6005-6596(0A)
- VLTAGE 6008-6240(3C)
- VLTAGE 6836-6839(1)

# 1023-3-2028CA\_ModMax\_Lluv-500kV

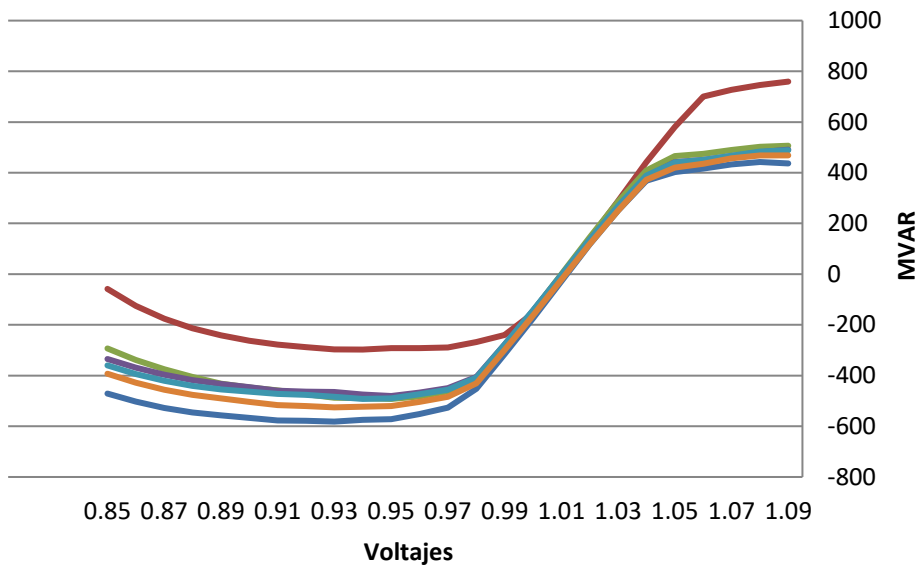
## Nodo: 6002



- BASE CASE
- VLTAGE 6460-6713(2C)
- VLTAGE 6005-6596(0A)
- VLTAGE 6008-6240(3C)
- VLTAGE 6005-6830(9A)
- VLTAGE 6836-6839(1)

# 1023-3-2028CA\_ModMax\_Lluv-500kV

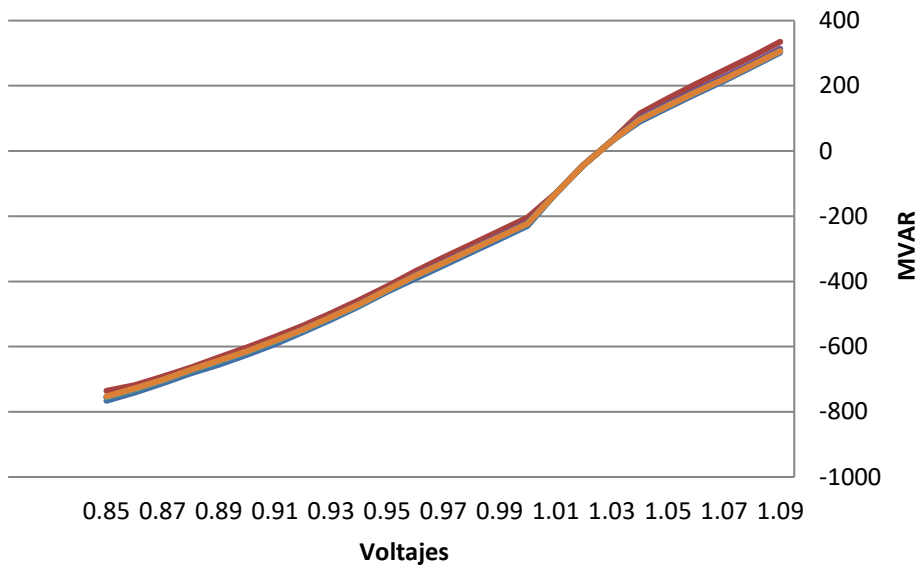
## Nodo: 6005



- BASE CASE
- VLTAGE 6836-6839(1)
- VLTAGE 6460-6713(2C)
- VLTAGE 6005-6830(9A)
- VLTAGE 6005-6596(0A)
- VLTAGE 6008-6240(3C)

# 1023-3-2028CA\_ModMax\_Lluv-500kV

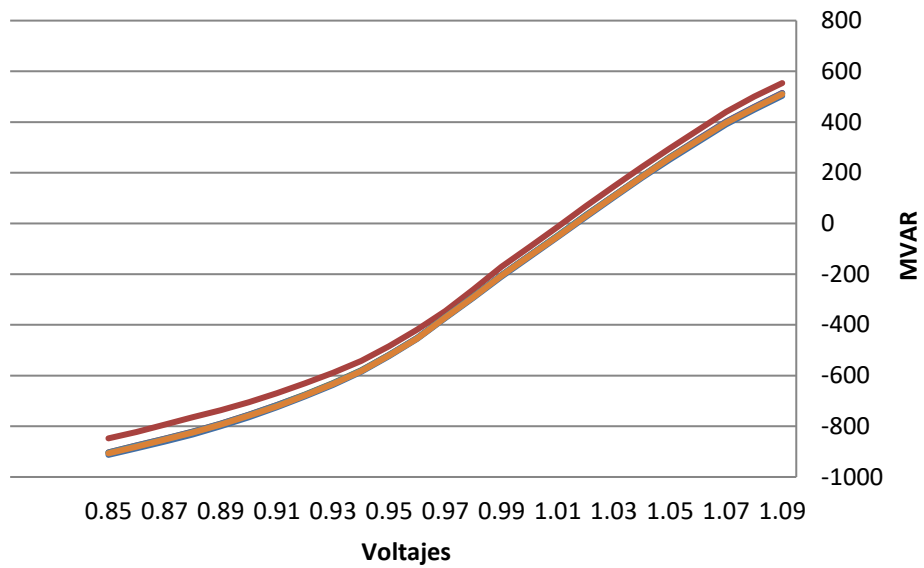
## Nodo: 6009



- BASE CASE
- VLTAGE 6836-6839(1)
- VLTAGE 6460-6713(2C)
- VLTAGE 6005-6830(9A)
- VLTAGE 6005-6596(0A)
- VLTAGE 6008-6240(3C)

# 1023-3-2028CA\_ModMax\_Lluv-500kV

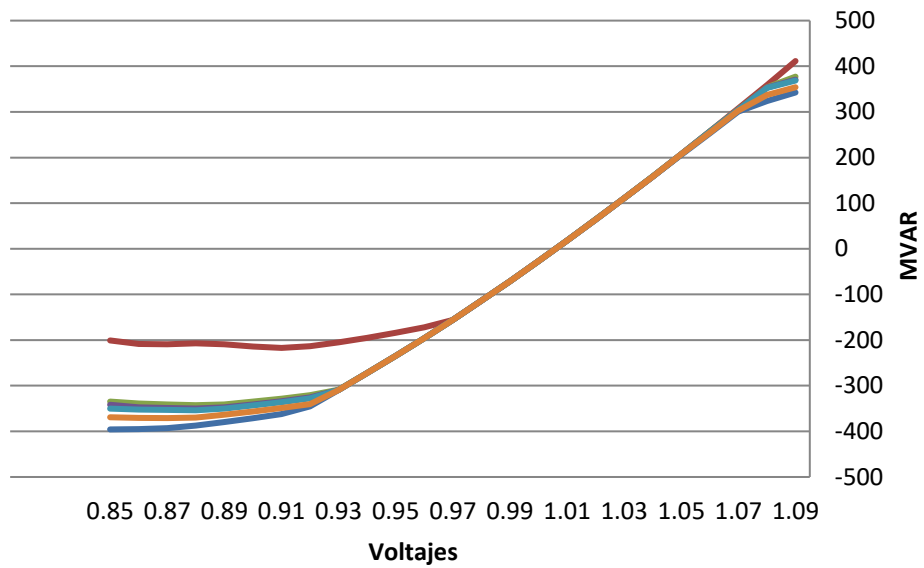
## Nodo: 6011



- BASE CASE
- VLTAGE 6836-6839(1)
- VLTAGE 6460-6713(2C)
- VLTAGE 6005-6830(9A)
- VLTAGE 6005-6596(0A)
- VLTAGE 6008-6240(3C)

# 1023-3-2028CA\_ModMax\_Lluv-500kV

## Nodo: 6173



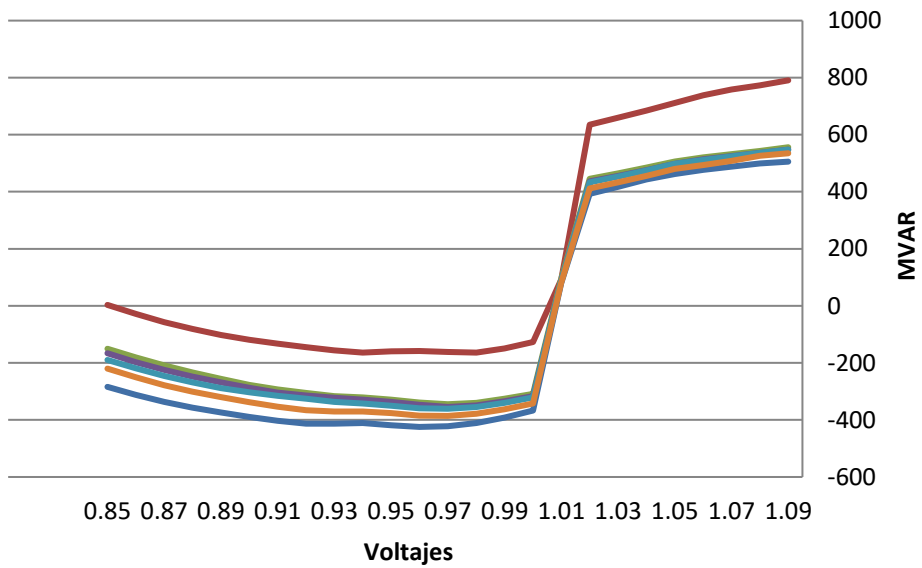
- BASE CASE
- VLTAGE 6460-6713(2C)
- VLTAGE 6005-6596(0A)
- VLTAGE 6836-6839(1)
- VLTAGE 6005-6830(9A)
- VLTAGE 6008-6240(3C)



NODO	BASE CASE	VLTAGE 6836-6839(1)	VLTAGE 6460-6713(2C)	VLTAGE 6005-6830(9A)	VLTAGE 6005-6596(0A)	VLTAGE 6008-6240(3C)
6001	-507.8123169	-256.7081604	-423.7953796	-433.4967957	-440.579895	-466.5401917
6002	-444.044342	-229.9495239	-375.810791	-384.2639771	-389.3012085	-410.662323
6005	-581.5436401	-297.3782043	-492.1243286	-480.585907	-492.2001953	-525.4109497
6009	-766.1466675	-735.7810059	-755.5452271	-754.0655518	-755.039978	-752.8270264
6011	-912.782959	-847.6785889	-902.8742065	-903.109375	-905.213623	-906.8192749
6173	-395.7662659	-217.1745605	-342.65448	-349.9796753	-353.9025879	-370.9351196

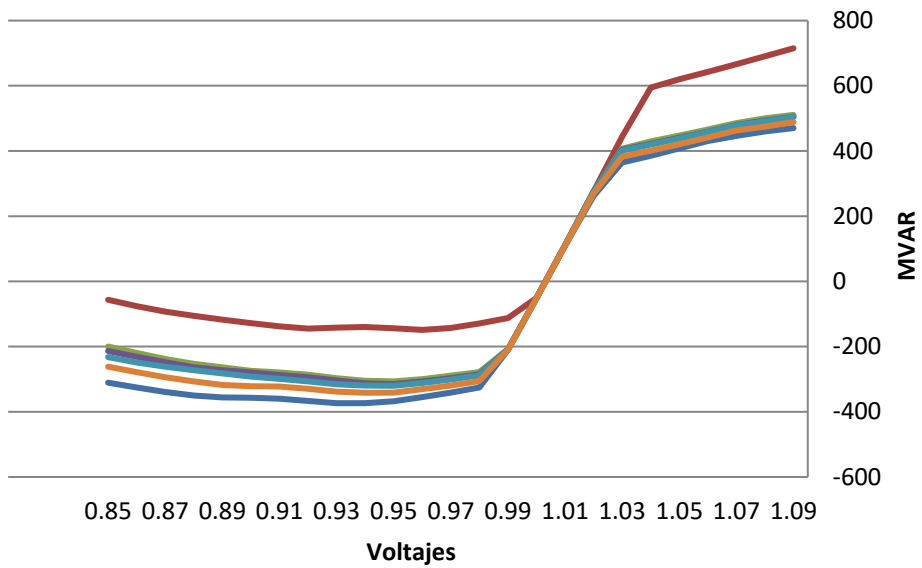
**2029 LLUVIOSA**

# 1023-3-2029CA\_ModMax\_Lluv1- 500kV Nodo: 6001



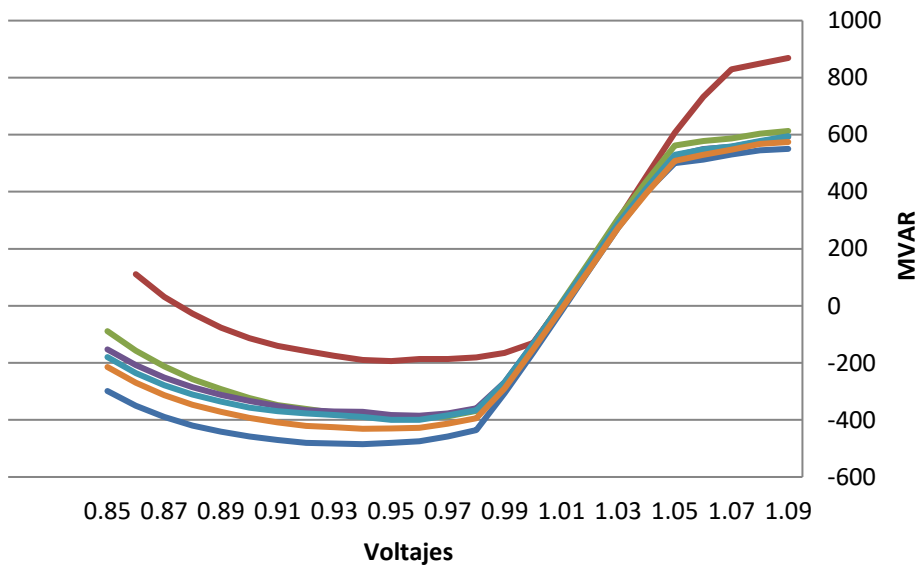
- BASE CASE
- VLTAGE 6460-6713(2C)
- VLTAGE 6005-6596(0A)
- VLTAGE 6836-6839(1)
- VLTAGE 6005-6830(9A)
- VLTAGE 6008-6240(3C)

# 1023-3-2029CA\_ModMax\_Lluv1- 500kV Nodo: 6002



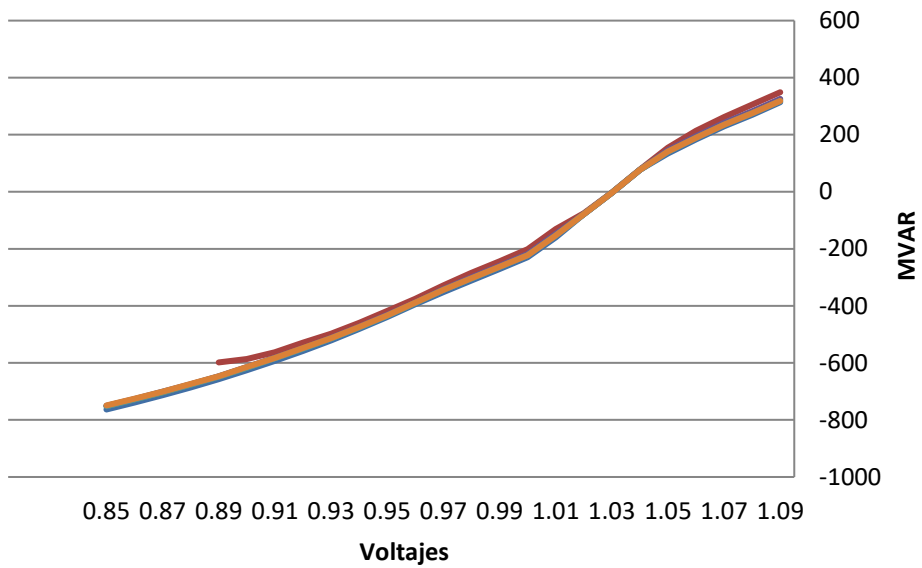
- BASE CASE
- VLTAGE 6460-6713(2C)
- VLTAGE 6005-6830(9A)
- VLTAGE 6005-6596(0A)
- VLTAGE 6008-6240(3C)
- VLTAGE 6836-6839(1)

# 1023-3-2029CA\_ModMax\_Lluv1- 500kV Nodo: 6005



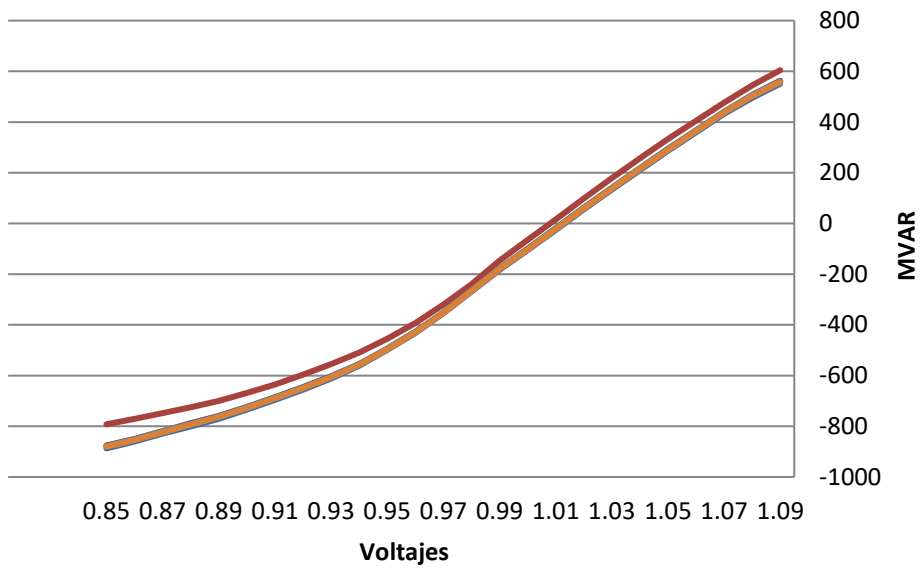
- BASE CASE
- VLTAGE 6460-6713(2C)
- VLTAGE 6005-6596(0A)
- VLTAGE 6836-6839(1)
- VLTAGE 6005-6830(9A)
- VLTAGE 6008-6240(3C)

# 1023-3-2029CA\_ModMax\_Lluv1- 500kV Nodo: 6009



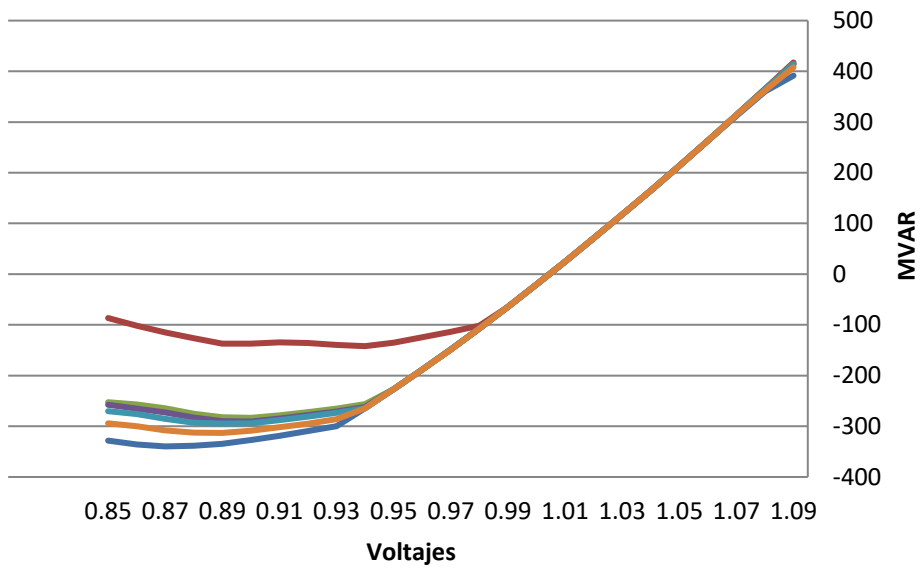
- BASE CASE
- VLTAGE 6836-6839(1)
- VLTAGE 6460-6713(2C)
- VLTAGE 6005-6830(9A)
- VLTAGE 6005-6596(0A)
- VLTAGE 6008-6240(3C)

# 1023-3-2029CA\_ModMax\_Lluv1- 500kV Nodo: 6011



- BASE CASE
- VLTAGE 6460-6713(2C)
- VLTAGE 6005-6596(0A)
- VLTAGE 6836-6839(1)
- VLTAGE 6005-6830(9A)
- VLTAGE 6008-6240(3C)

# 1023-3-2029CA\_ModMax\_Lluv1- 500kV Nodo: 6173



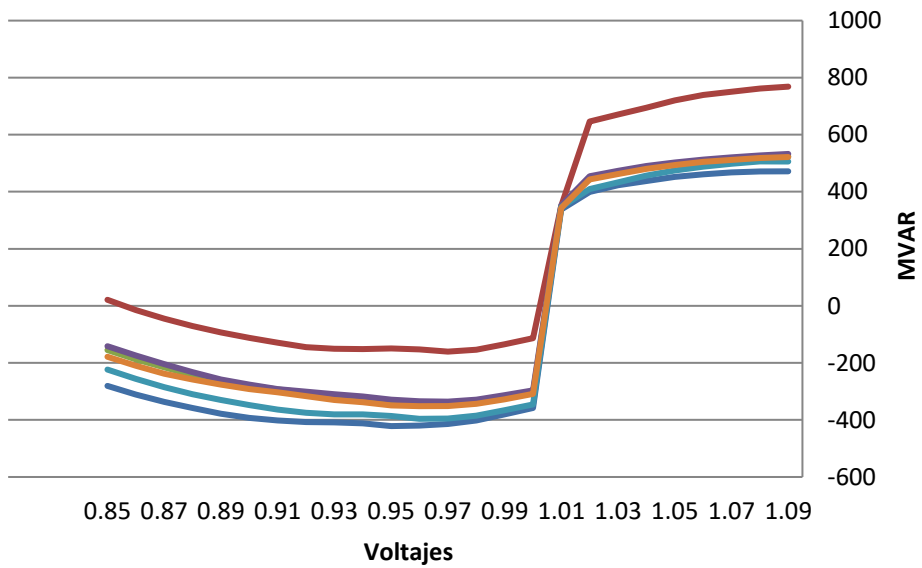
- BASE CASE
- VLTAGE 6836-6839(1)
- VLTAGE 6460-6713(2C)
- VLTAGE 6005-6830(9A)
- VLTAGE 6005-6596(0A)
- VLTAGE 6008-6240(3C)



NODO	BASE CASE	VLTAGE 6836-6839(1)	VLTAGE 6460-6713(2C)	VLTAGE 6005-6830(9A)	VLTAGE 6005-6596(0A)	VLTAGE 6008-6240(3C)
6001	-424.4870605	-163.9415436	-344.9026794	-354.4118958	-360.744873	-385.8226318
6002	-373.6788635	-148.8087006	-306.6057129	-314.9990845	-320.1150818	-341.6206665
6005	-484.9367981	-193.7077332	-393.0735779	-385.171875	-399.6740723	-431.0116272
6009	-763.4075928	-598.3186035	-751.7985229	-750.4033813	-751.2975464	-749.161438
6011	-887.2816772	-792.0998535	-876.0195923	-875.8690186	-878.711792	-880.1893921
6173	-339.7280579	-141.9632263	-283.3215942	-290.6529846	-294.7068787	-313.0754395

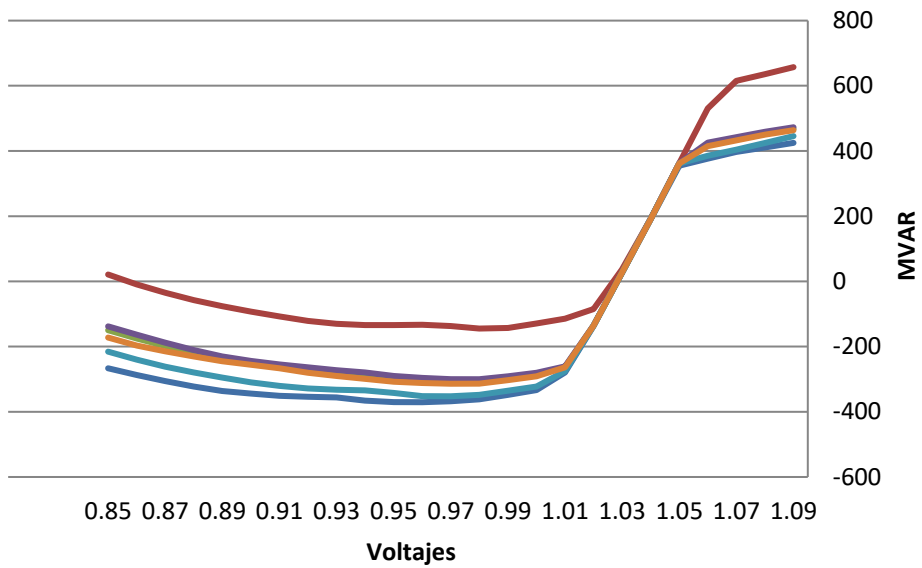
**2030 LLUVIOSA**

## 1023-3-2030CA\_ModMax\_Lluv1- 500kV Nodo: 6001



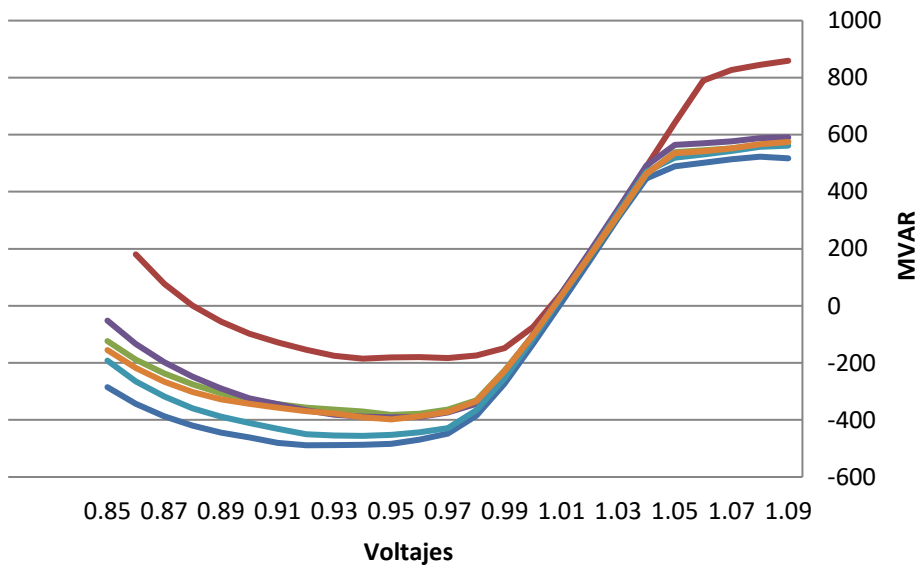
- BASE CASE
- VLTAGE 6005-6830(9A)
- VLTAGE 6096-6837(0A)
- VLTAGE 6836-6839(1)
- VLTAGE 6460-6713(2C)
- VLTAGE 6005-6596(0A)

# 1023-3-2030CA\_ModMax\_Lluv1- 500kV Nodo: 6002



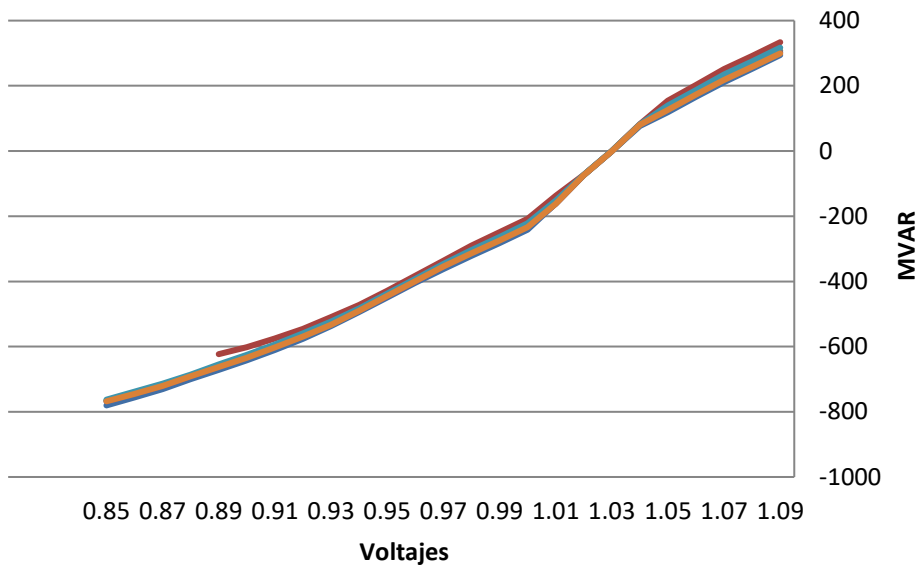
- BASE CASE
- VLTAGE 6005-6830(9A)
- VLTAGE 6096-6837(0A)
- VLTAGE 6836-6839(1)
- VLTAGE 6460-6713(2C)
- VLTAGE 6005-6596(0A)

# 1023-3-2030CA\_ModMax\_Lluv1- 500kV Nodo: 6005



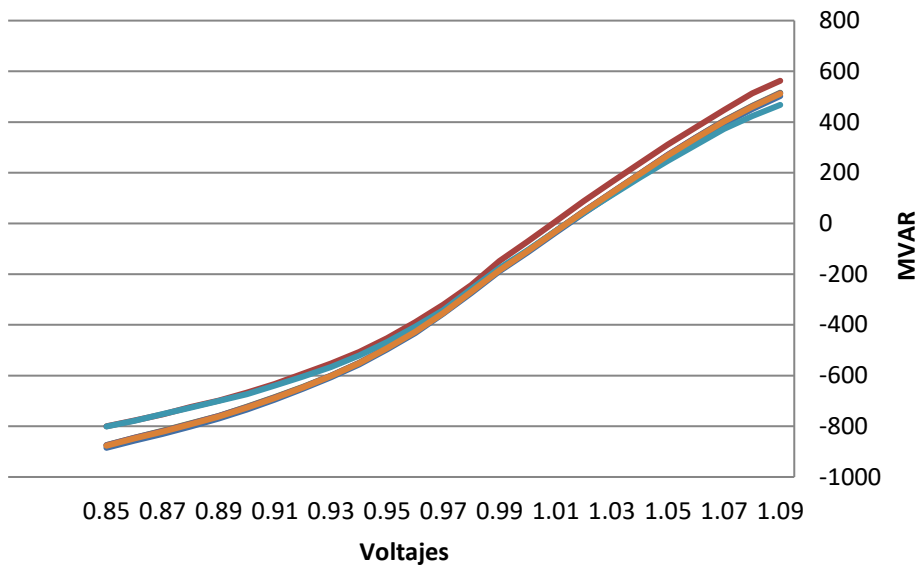
- BASE CASE
- VLTAGE 6005-6830(9A)
- VLTAGE 6096-6837(0A)
- VLTAGE 6836-6839(1)
- VLTAGE 6460-6713(2C)
- VLTAGE 6005-6596(0A)

# 1023-3-2030CA\_ModMax\_Lluv1- 500kV Nodo: 6009



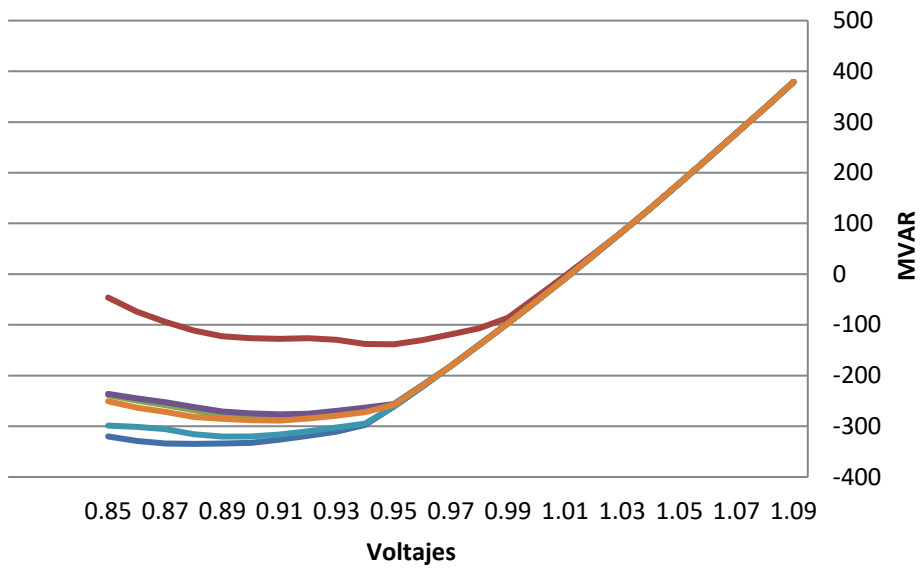
- BASE CASE
- VLTAGE 6836-6839(1)
- VLTAGE 6005-6830(9A)
- VLTAGE 6460-6713(2C)
- VLTAGE 6096-6837(0A)
- VLTAGE 6005-6596(0A)

# 1023-3-2030CA\_ModMax\_Lluv1- 500kV Nodo: 6011



- BASE CASE
- VLTAGE 6005-6830(9A)
- VLTAGE 6096-6837(0A)
- VLTAGE 6836-6839(1)
- VLTAGE 6460-6713(2C)
- VLTAGE 6005-6596(0A)

# 1023-3-2030CA\_ModMax\_Lluv1- 500kV Nodo: 6173



- BASE CASE
- VLTAGE 6005-6830(9A)
- VLTAGE 6096-6837(0A)
- VLTAGE 6836-6839(1)
- VLTAGE 6460-6713(2C)
- VLTAGE 6005-6596(0A)

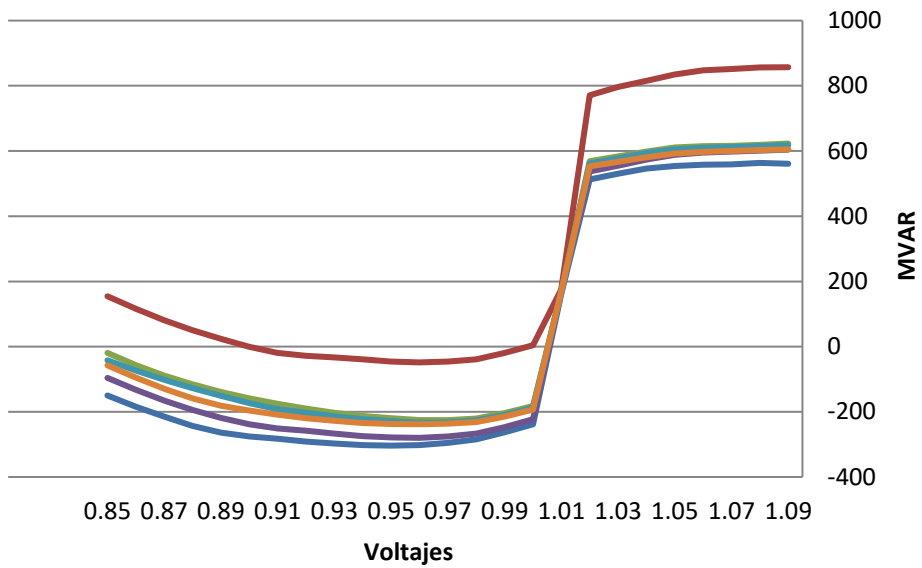


NODO	BASE CASE	VLTAGE 6836-6839(1)	VLTAGE 6005-6830(9A)	VLTAGE 6460-6713(2C)	VLTAGE 6096-6837(0A)	VLTAGE 6005-6596(0A)
6001	-421.5441589	-160.4449005	-344.6503296	-335.8041992	-396.0135193	-351.7293091
6002	-370.3002625	-144.6459198	-307.8636475	-300.1166687	-352.401062	-313.8984985
6005	-488.7792664	-185.152832	-382.2440491	-390.7684937	-455.872345	-398.0508423
6009	-780.4247437	-623.1646118	-765.3891602	-767.6571045	-762.7825928	-767.7590942
6011	-884.8799438	-800.1090088	-874.2223511	-874.4418945	-800.7360229	-876.7119141
6173	-334.7221985	-138.3720093	-283.6293335	-276.4023743	-320.3148499	-288.7514038

**2031 LLUVIOSA**

# 1023-3-2031CA\_ModMax\_Lluv-500kV

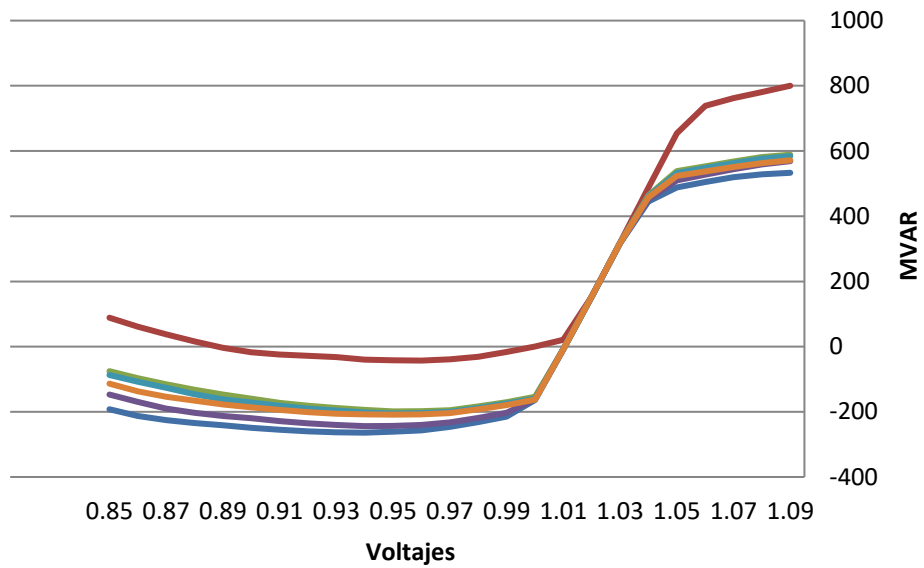
## Nodo: 6001



- BASE CASE
- VLTAGE 6005-6830(9A)
- VLTAGE 6096-6837(0A)
- VLTAGE 6005-6596(0A)
- VLTAGE 6713-6741(2C)
- VLTAGE 6836-6839(1)

# 1023-3-2031CA\_ModMax\_Lluv-500kV

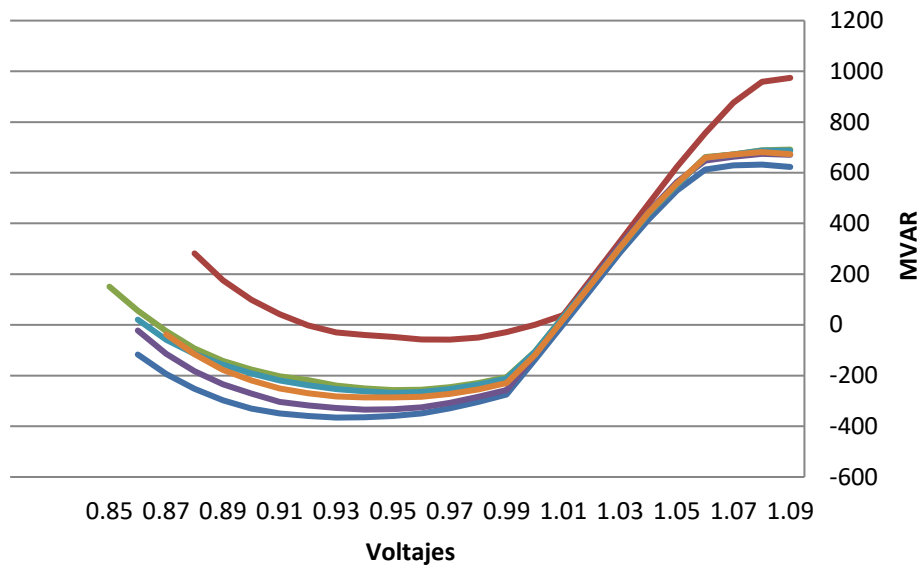
## Nodo: 6002



- BASE CASE
- VLTAGE 6005-6830(9A)
- VLTAGE 6096-6837(0A)
- VLTAGE 6005-6596(0A)
- VLTAGE 6713-6741(2C)
- VLTAGE 6836-6839(1)

# 1023-3-2031CA\_ModMax\_Lluv-500kV

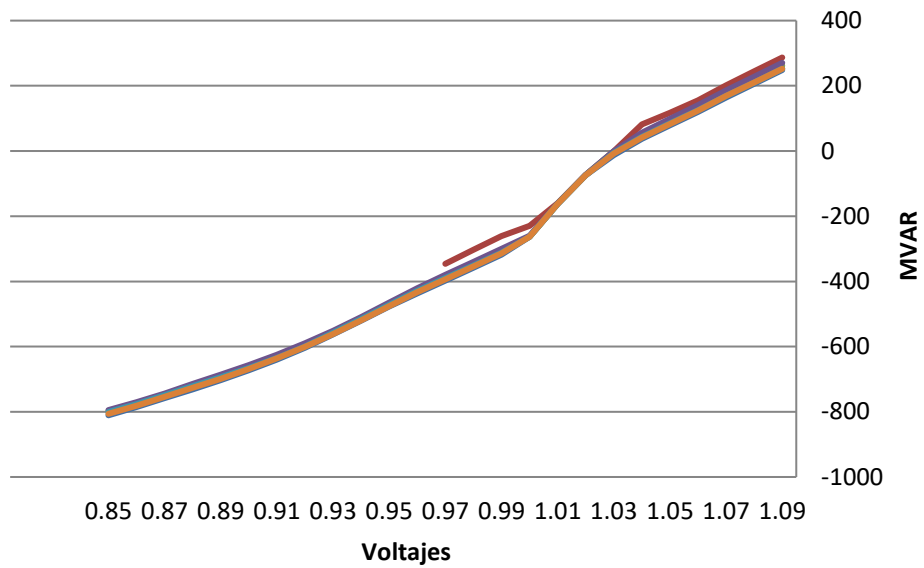
## Nodo: 6005



- BASE CASE
- VLTAGE 6005-6830(9A)
- VLTAGE 6096-6837(0A)
- VLTAGE 6005-6596(0A)
- VLTAGE 6713-6741(2C)
- VLTAGE 6836-6839(1)

# 1023-3-2031CA\_ModMax\_Lluv-500kV

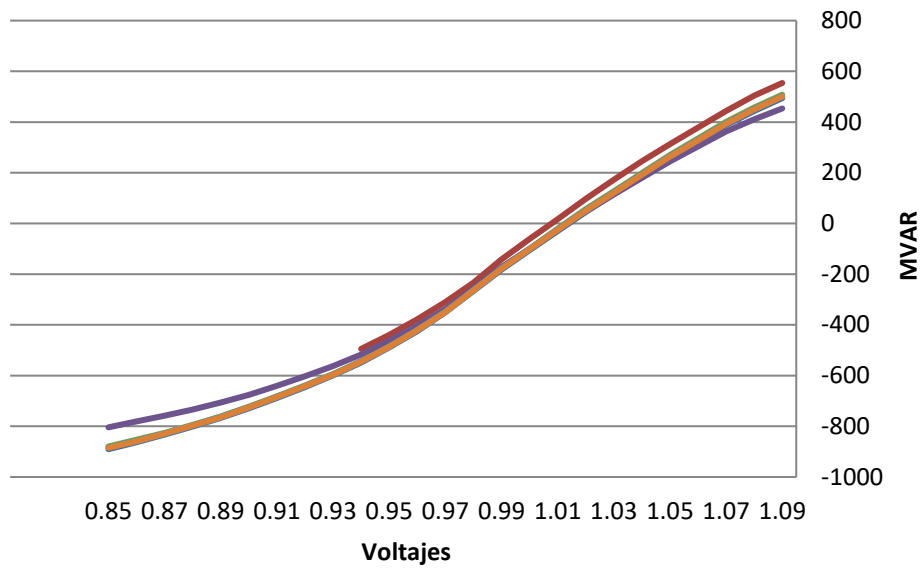
## Nodo: 6009



- BASE CASE
- VLTAGE 6005-6830(9A)
- VLTAGE 6096-6837(0A)
- VLTAGE 6005-6596(0A)
- VLTAGE 6836-6839(1)
- VLTAGE 6096-6837(0A)
- VLTAGE 6713-6741(2C)

# 1023-3-2031CA\_ModMax\_Lluv-500kV

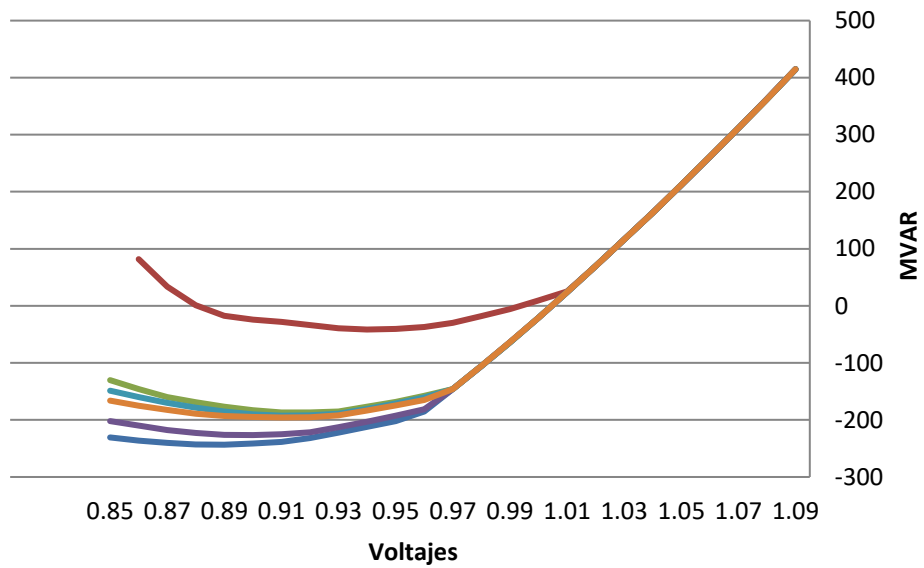
## Nodo: 6011



- BASE CASE
- VLTAGE 6836-6839(1)
- VLTAGE 6005-6830(9A)
- VLTAGE 6096-6837(0A)
- VLTAGE 6005-6596(0A)
- VLTAGE 6713-6741(2C)

# 1023-3-2031CA\_ModMax\_Lluv-500kV

## Nodo: 6173



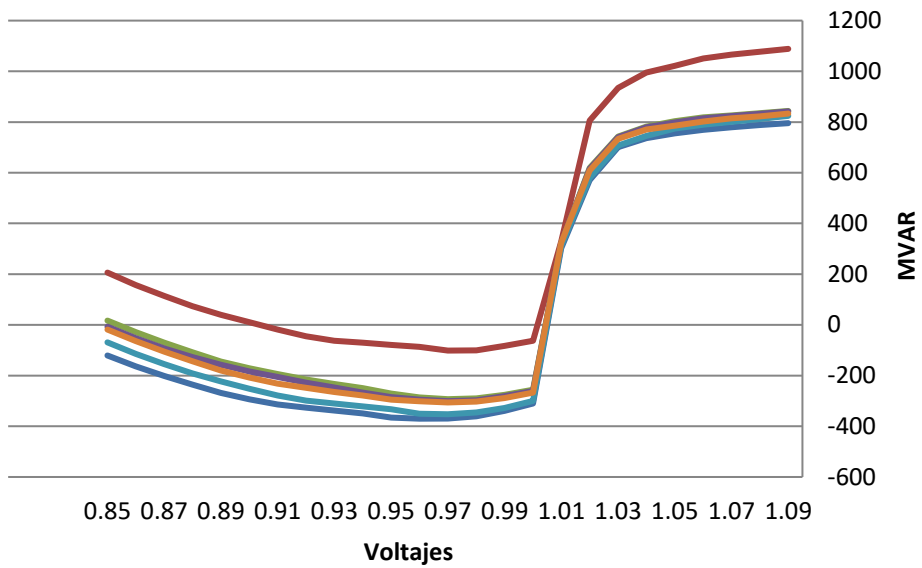
- BASE CASE
- VLTAGE 6005-6830(9A)
- VLTAGE 6096-6837(0A)
- VLTAGE 6005-6596(0A)
- VLTAGE 6836-6839(1)
- VLTAGE 6713-6741(2C)



NODO	BASE CASE	VLTAGE 6836-6839(1)	VLTAGE 6005-6830(9A)	VLTAGE 6096-6837(0A)	VLTAGE 6005-6596(0A)	VLTAGE 6713-6741(2C)
6001	-303.7294006	-48.4360466	-225.4084167	-279.9682312	-233.5349121	-238.1112976
6002	-264.0785828	-42.94372177	-198.7911224	-243.9265442	-205.2270203	-208.7423401
6005	-365.6809082	-58.16309357	-257.3571777	-334.3276672	-268.4261169	-286.173645
6009	-810.7350464	-346.0815735	-798.4835815	-794.7962036	-800.7566528	-806.1815186
6011	-890.4886475	-494.94104	-879.6403809	-804.244873	-882.7548218	-885.1077881
6173	-243.4013062	-41.51372147	-186.8488312	-226.5565796	-192.4972839	-195.6672363

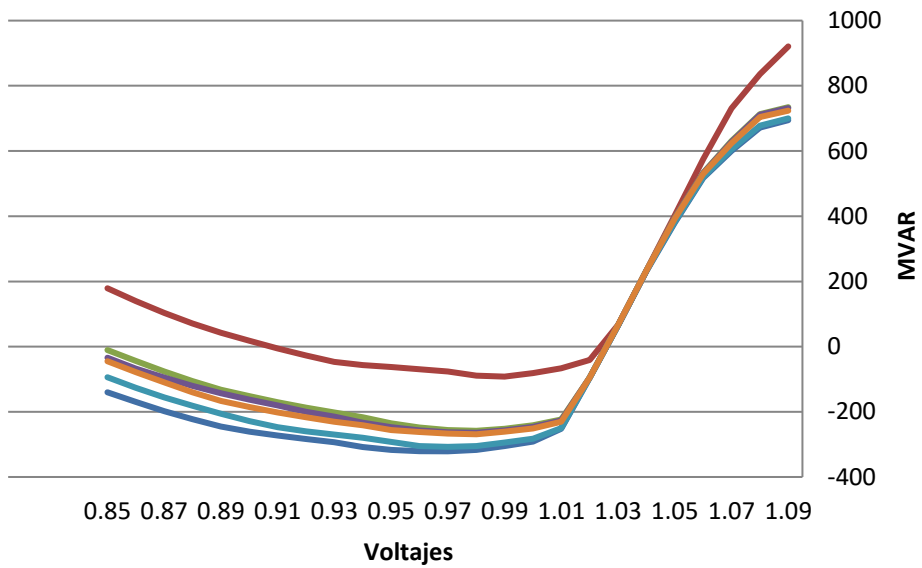
**2033 LLUVIOSA**

# 1023-3-2033CA\_ModMax\_Lluv- 500kV+STC Nodo: 6001



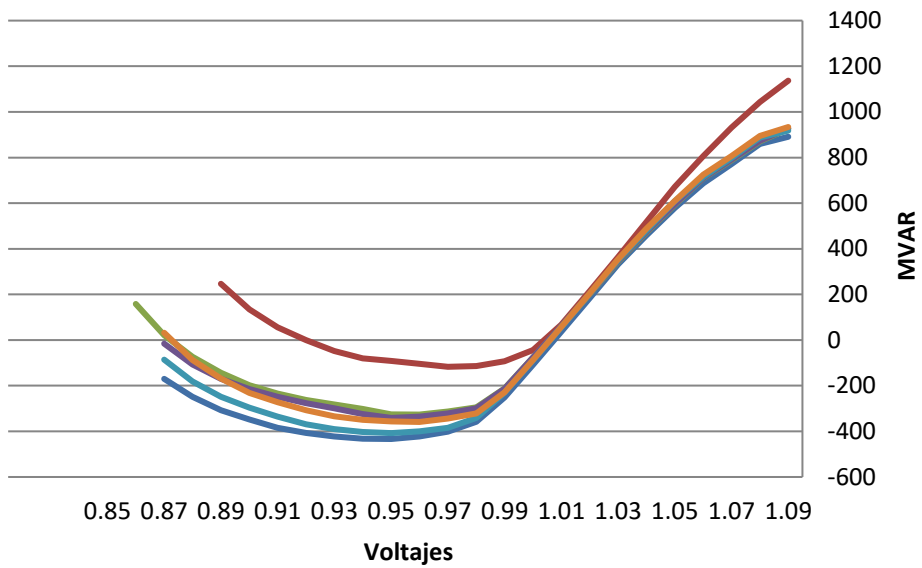
- BASE CASE
- VLTAGE 6005-6830(9A)
- VLTAGE 6005-6596(0A)
- VLTAGE 6096-6837(0A)
- VLTAGE 6713-6741(2C)
- VLTAGE 6836-6839(1)

# 1023-3-2033CA\_ModMax\_Lluv- 500kV+STC Nodo: 6002



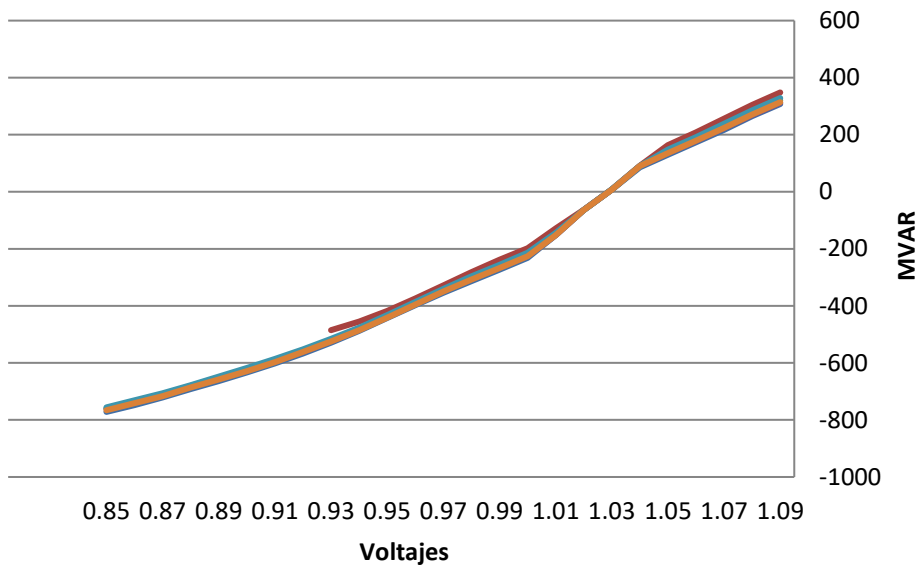
- BASE CASE
- VLTAGE 6836-6839(1)
- VLTAGE 6005-6830(9A)
- VLTAGE 6005-6596(0A)
- VLTAGE 6096-6837(0A)
- VLTAGE 6713-6741(2C)

# 1023-3-2033CA\_ModMax\_Lluv- 500kV+STC Nodo: 6005



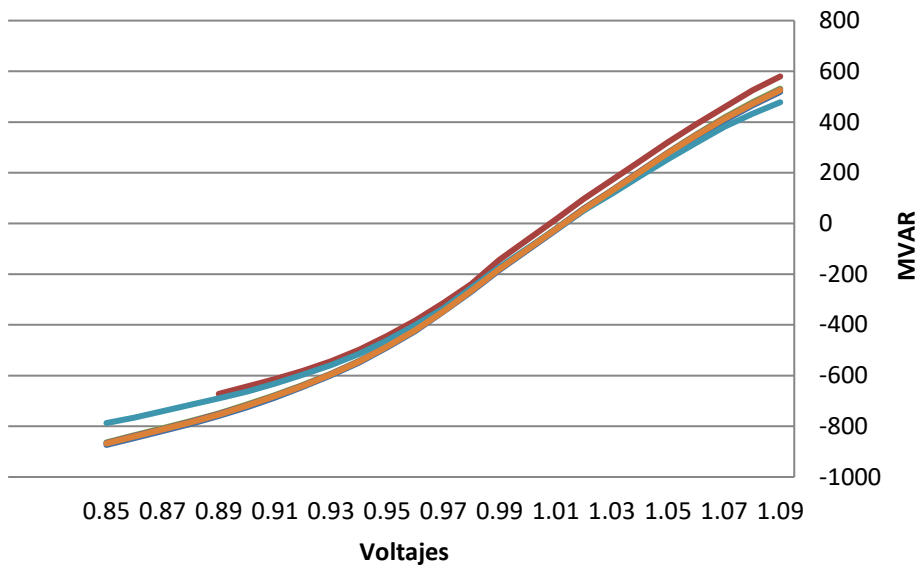
- BASE CASE
- VLTAGE 6005-6830(9A)
- VLTAGE 6005-6596(0A)
- VLTAGE 6096-6837(0A)
- VLTAGE 6713-6741(2C)
- VLTAGE 6836-6839(1)

# 1023-3-2033CA\_ModMax\_Lluv- 500kV+STC Nodo: 6009



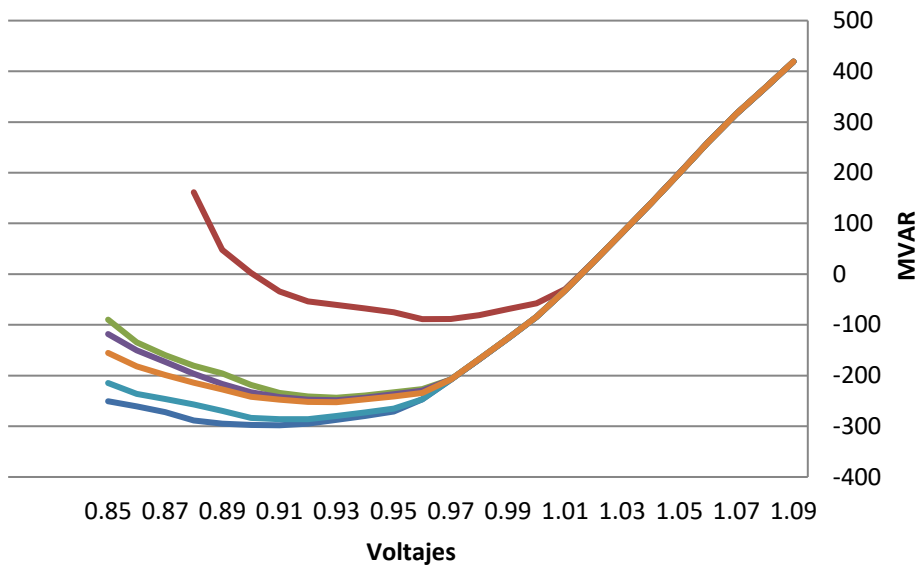
- BASE CASE
- VLTAGE 6836-6839(1)
- VLTAGE 6005-6830(9A)
- VLTAGE 6005-6596(0A)
- VLTAGE 6096-6837(0A)
- VLTAGE 6713-6741(2C)

# 1023-3-2033CA\_ModMax\_Lluv- 500kV+STC Nodo: 6011



- BASE CASE
- VLTAGE 6836-6839(1)
- VLTAGE 6005-6830(9A)
- VLTAGE 6005-6596(0A)
- VLTAGE 6096-6837(0A)
- VLTAGE 6713-6741(2C)

# 1023-3-2033CA\_ModMax\_Lluv- 500kV+STC Nodo: 6173



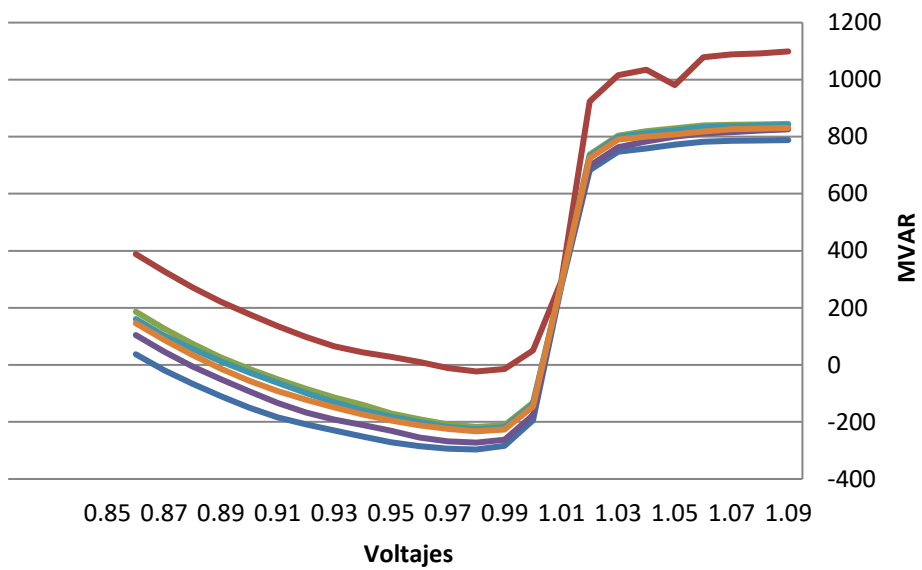
- BASE CASE
- VLTAGE 6005-6830(9A)
- VLTAGE 6005-6596(0A)
- VLTAGE 6096-6837(0A)
- VLTAGE 6836-6839(1)
- VLTAGE 6713-6741(2C)



NODO	BASE CASE	VLTAGE 6836-6839(1)	VLTAGE 6005-6830(9A)	VLTAGE 6005-6596(0A)	VLTAGE 6096-6837(0A)	VLTAGE 6713-6741(2C)
6001	-370.0559082	-101.3793945	-293.0557861	-300.8046875	-352.5388489	-306.0562134
6002	-321.288147	-92.10289001	-258.2690125	-264.2497253	-307.4819641	-268.9466248
6005	-433.5713501	-117.0951614	-326.4178162	-341.0516357	-407.6800232	-358.8547058
6009	-771.8225708	-485.2796631	-759.1929932	-761.475769	-755.9005737	-765.9411011
6011	-873.6348267	-672.3025513	-863.6835327	-865.9703369	-787.2921753	-867.7198486
6173	-298.0458069	-88.67362213	-243.7149811	-248.6280212	-285.9907532	-252.5102386

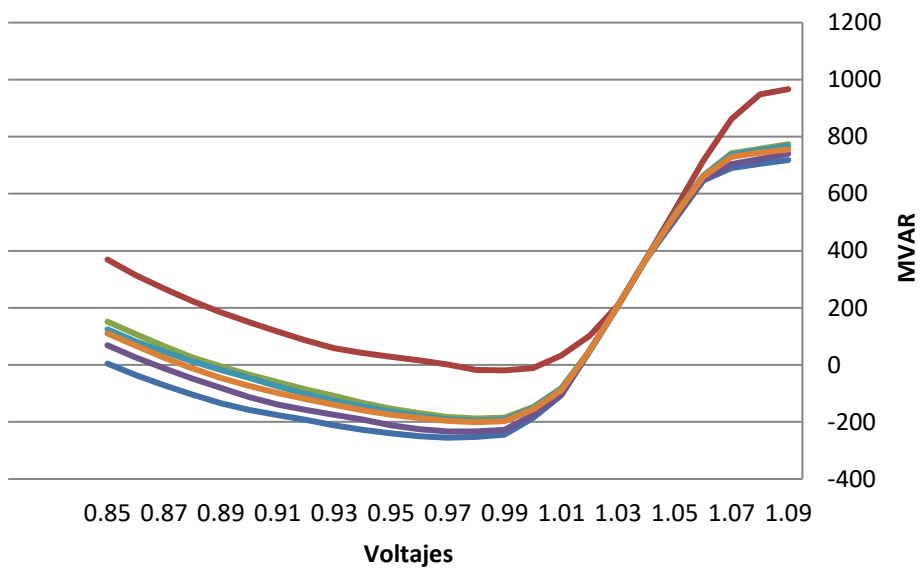
**2035 LLUVIOSA**

# 1023-3-2035CA\_ModMax\_Lluv- 500kV+STC Nodo: 6001



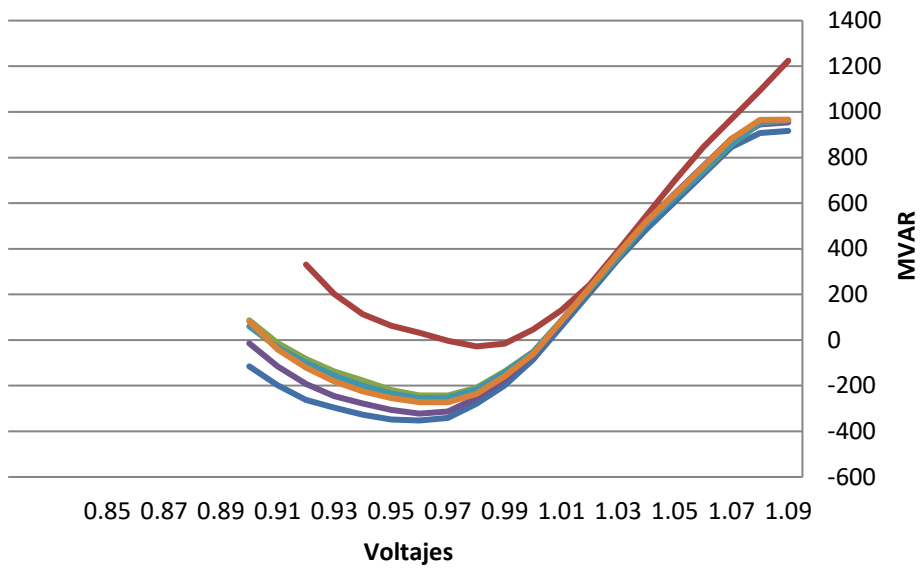
- BASE CASE
- VLTAGE 6005-6830(9A)
- VLTAGE 6096-6837(0A)
- VLTAGE 6005-6596(0A)
- VLTAGE 6713-6741(2C)
- VLTAGE 6836-6839(1)

# 1023-3-2035CA\_ModMax\_Lluv- 500kV+STC Nodo: 6002



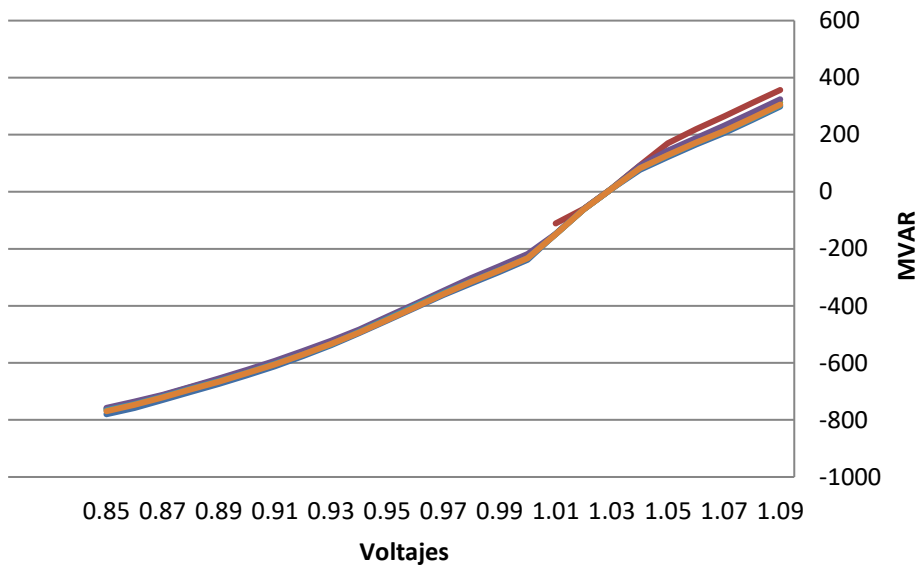
- BASE CASE
- VLTAGE 6005-6830(9A)
- VLTAGE 6096-6837(0A)
- VLTAGE 6005-6596(0A)
- VLTAGE 6713-6741(2C)
- VLTAGE 6836-6839(1)

## 1023-3-2035CA\_ModMax\_Lluv- 500kV+STC Nodo: 6005



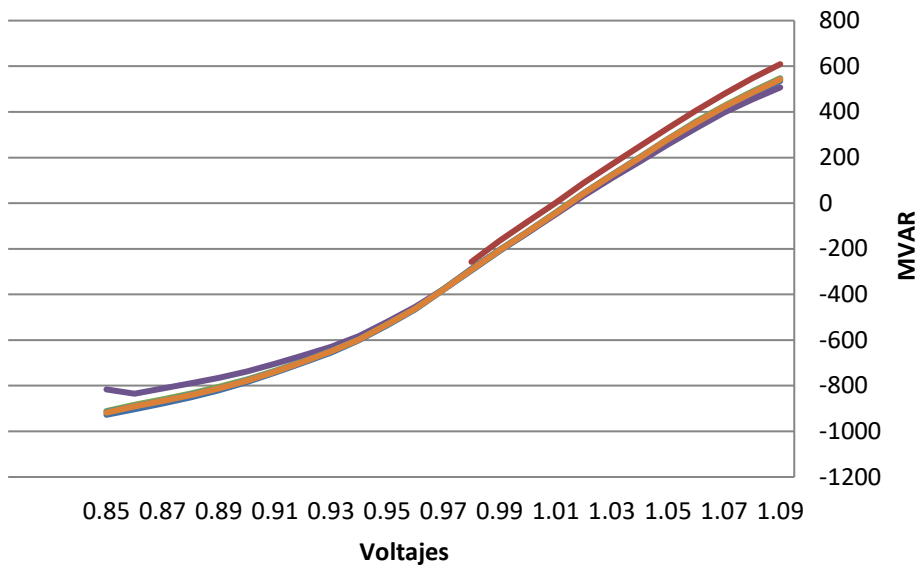
- BASE CASE
- VLTAGE 6005-6830(9A)
- VLTAGE 6096-6837(0A)
- VLTAGE 6005-6596(0A)
- VLTAGE 6713-6741(2C)
- VLTAGE 6836-6839(1)

# 1023-3-2035CA\_ModMax\_Lluv- 500kV+STC Nodo: 6009



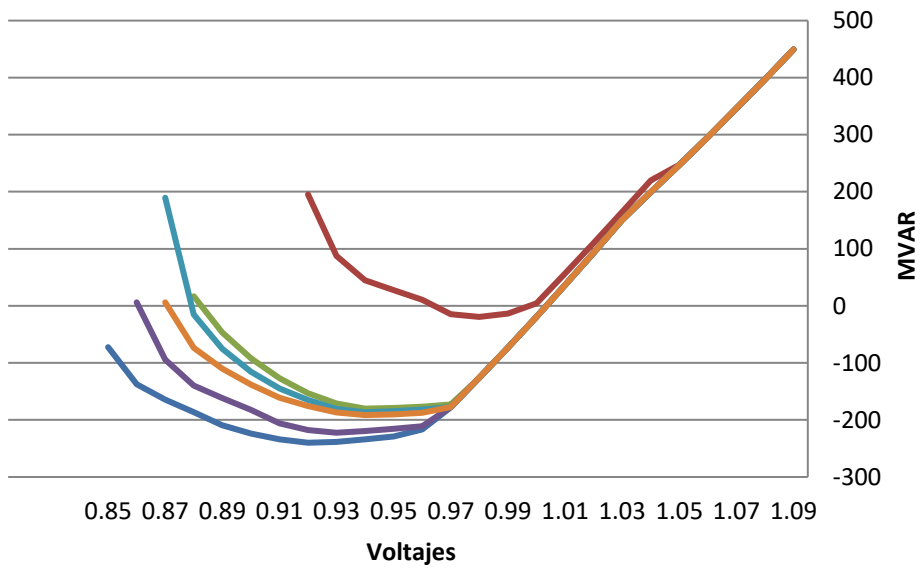
- BASE CASE
- VLTAGE 6836-6839(1)
- VLTAGE 6005-6830(9A)
- VLTAGE 6096-6837(0A)
- VLTAGE 6005-6596(0A)
- VLTAGE 6713-6741(2C)

# 1023-3-2035CA\_ModMax\_Lluv- 500kV+STC Nodo: 6011



- BASE CASE
- VLTAGE 6836-6839(1)
- VLTAGE 6005-6830(9A)
- VLTAGE 6096-6837(0A)
- VLTAGE 6005-6596(0A)
- VLTAGE 6713-6741(2C)

# 1023-3-2035CA\_ModMax\_Lluv- 500kV+STC Nodo: 6173



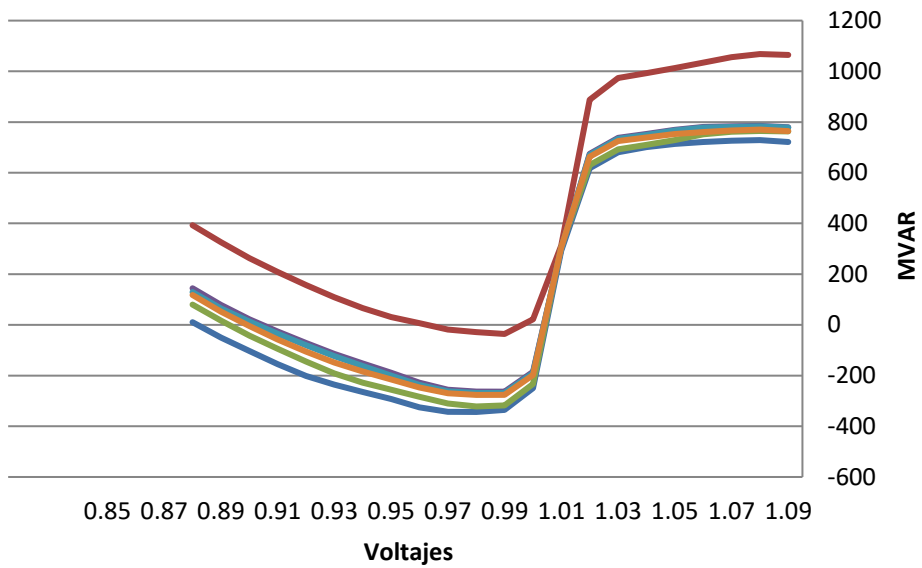
- BASE CASE
- VLTAGE 6005-6830(9A)
- VLTAGE 6005-6596(0A)
- VLTAGE 6836-6839(1)
- VLTAGE 6096-6837(0A)
- VLTAGE 6713-6741(2C)



NODO	BASE CASE	VLTAGE 6836-6839(1)	VLTAGE 6005-6830(9A)	VLTAGE 6096-6837(0A)	VLTAGE 6005-6596(0A)	VLTAGE 6713-6741(2C)
6001	-296.633606	-23.07023239	-217.3314819	-272.4220886	-225.5452576	-232.8059235
6002	-255.3103485	-19.19473076	-188.2006683	-233.4135284	-195.0587921	-200.7975311
6005	-352.5745239	-27.74284554	-242.5552826	-322.2244263	-254.6907196	-272.5401306
6009	-780.0424805	-111.1089249	-761.2294922	-757.6438599	-765.8462524	-769.3947754
6011	-927.435791	-257.3461304	-910.8598022	-835.093811	-914.2908325	-918.0575562
6173	-239.9708099	-19.42783165	-180.1352844	-222.4280853	-186.5968628	-191.470108

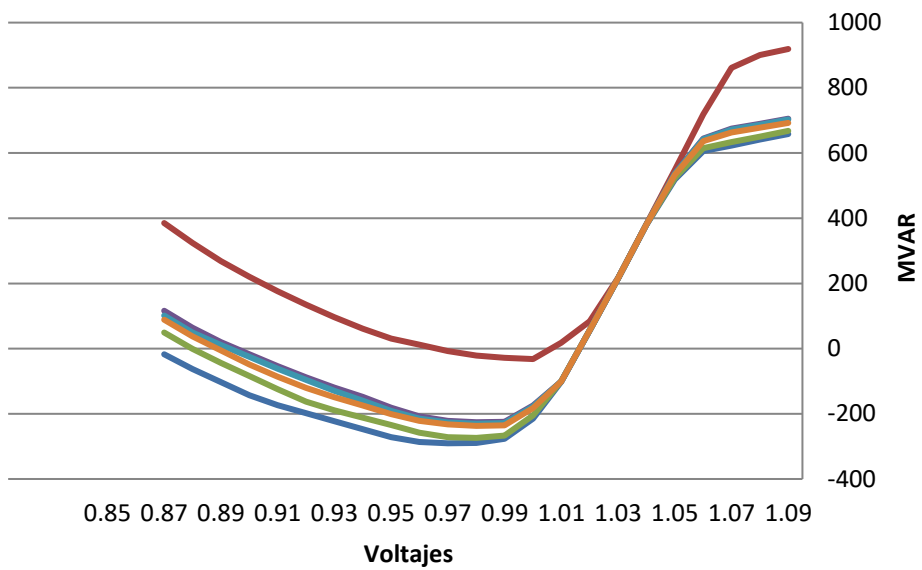
**2037 LLUVIOSA**

# 1023-3-2037CA\_ModMax\_Lluv- 500kV+STC Nodo: 6001



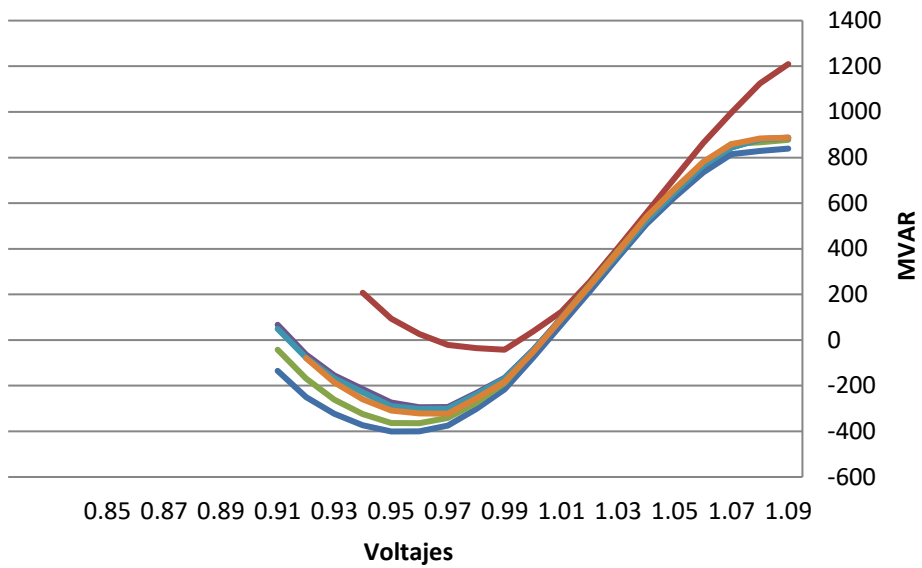
- BASE CASE
- VLTAGE 6096-6837(0A)
- VLTAGE 6005-6830(9A)
- VLTAGE 6005-6596(0A)
- VLTAGE 6713-6741(2C)
- VLTAGE 6836-6839(1)

# 1023-3-2037CA\_ModMax\_Lluv- 500kV+STC Nodo: 6002



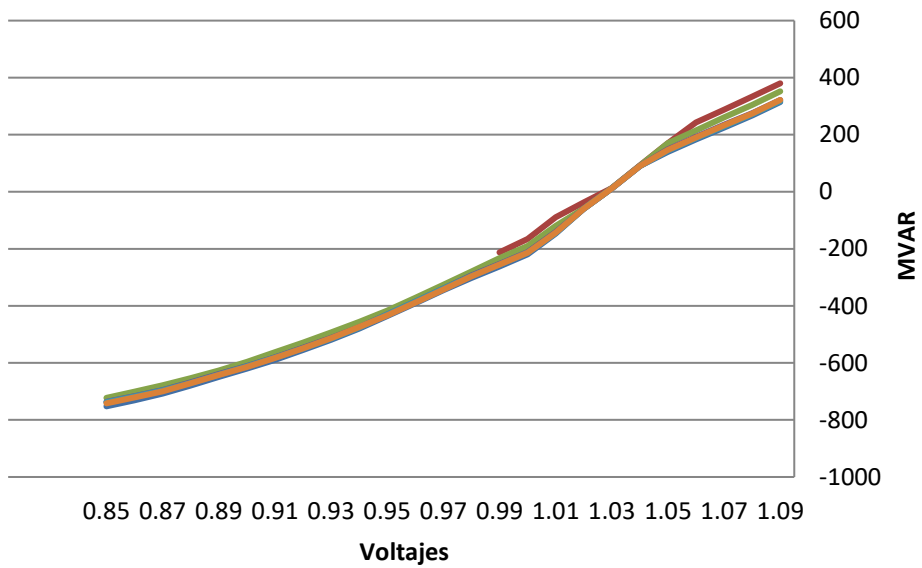
- BASE CASE
- VLTAGE 6096-6837(0A)
- VLTAGE 6005-6596(0A)
- VLTAGE 6836-6839(1)
- VLTAGE 6005-6830(9A)
- VLTAGE 6713-6741(2C)

# 1023-3-2037CA\_ModMax\_Lluv- 500kV+STC Nodo: 6005



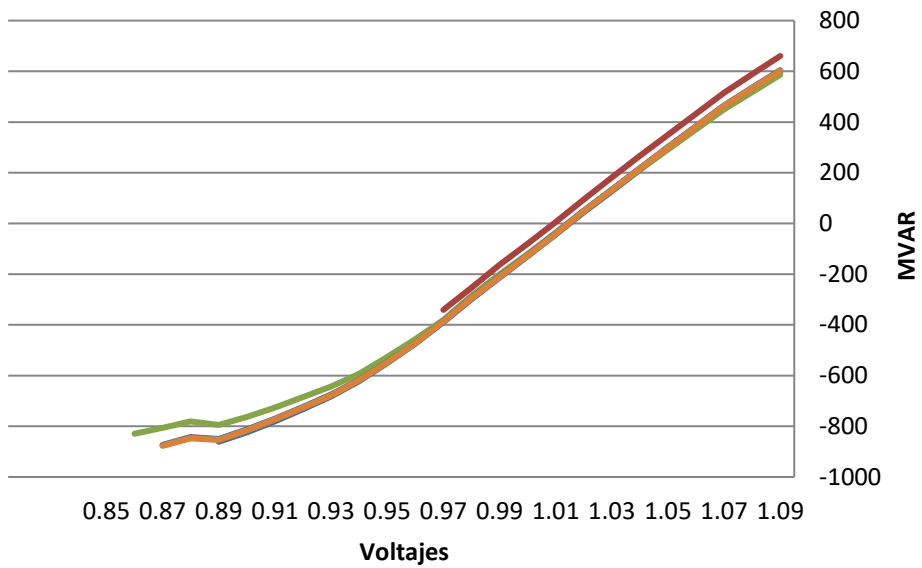
- BASE CASE
- VLTAGE 6096-6837(0A)
- VLTAGE 6005-6596(0A)
- VLTAGE 6836-6839(1)
- VLTAGE 6005-6830(9A)
- VLTAGE 6713-6741(2C)

# 1023-3-2037CA\_ModMax\_Lluv- 500kV+STC Nodo: 6009



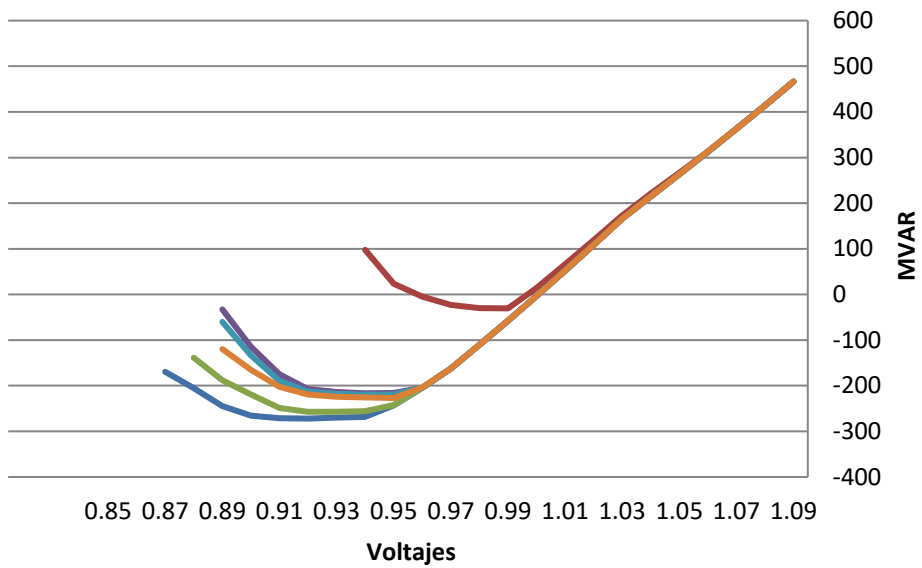
- BASE CASE
- VLTAGE 6836-6839(1)
- VLTAGE 6096-6837(0A)
- VLTAGE 6005-6830(9A)
- VLTAGE 6005-6596(0A)
- VLTAGE 6713-6741(2C)

# 1023-3-2037CA\_ModMax\_Lluv- 500kV+STC Nodo: 6011



- BASE CASE
- VLTAGE 6096-6837(0A)
- VLTAGE 6005-6596(0A)
- VLTAGE 6836-6839(1)
- VLTAGE 6005-6830(9A)
- VLTAGE 6713-6741(2C)

# 1023-3-2037CA\_ModMax\_Lluv- 500kV+STC Nodo: 6173



- BASE CASE
- VLTAGE 6096-6837(0A)
- VLTAGE 6005-6596(0A)
- VLTAGE 6836-6839(1)
- VLTAGE 6005-6830(9A)
- VLTAGE 6713-6741(2C)



NODO	BASE CASE	VLTAGE 6836-6839(1)	VLTAGE 6096-6837(0A)	VLTAGE 6005-6830(9A)	VLTAGE 6005-6596(0A)	VLTAGE 6713-6741(2C)
6001	-343.5245361	-35.88352966	-321.8670654	-263.0989685	-268.8589783	-276.3103333
6002	-290.5300293	-32.12562943	-273.916687	-225.8649902	-230.5371246	-237.084671
6005	-400.5977173	-42.33467102	-364.1988831	-294.2824402	-302.1192017	-322.7417603
6009	-752.2316284	-212.6052094	-722.6436157	-736.2633057	-737.6182861	-741.7937012
6011	-860.9801025	-341.0059814	-829.3619385	-873.5599365	-875.1402588	-877.105835
6173	-272.0280457	-30.47117233	-257.0060425	-216.661911	-219.7547607	-226.9334259