

**PESIN
2023**

TOMO III

ANEXO V

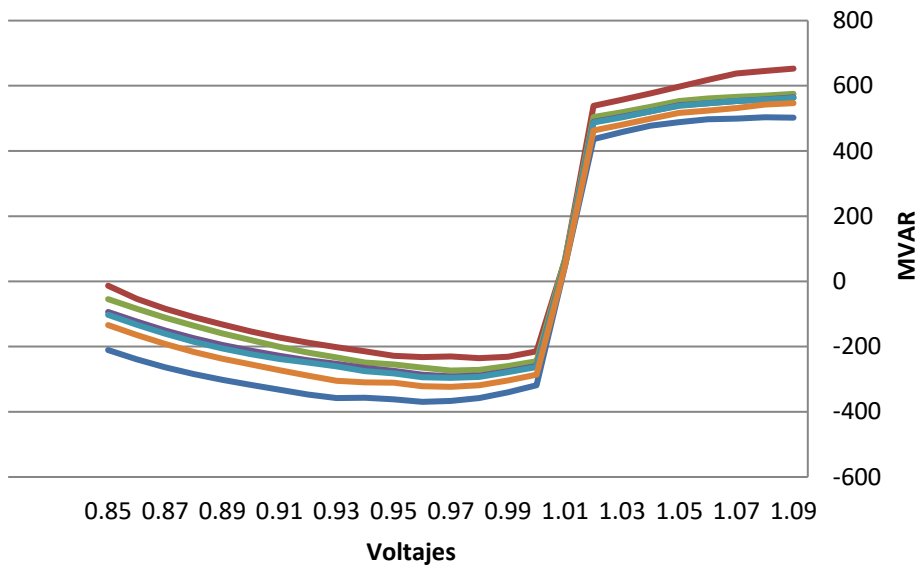
ANÁLISIS QV

LARGO PLAZO

(CUARTA LÍNEA EN 230KV)

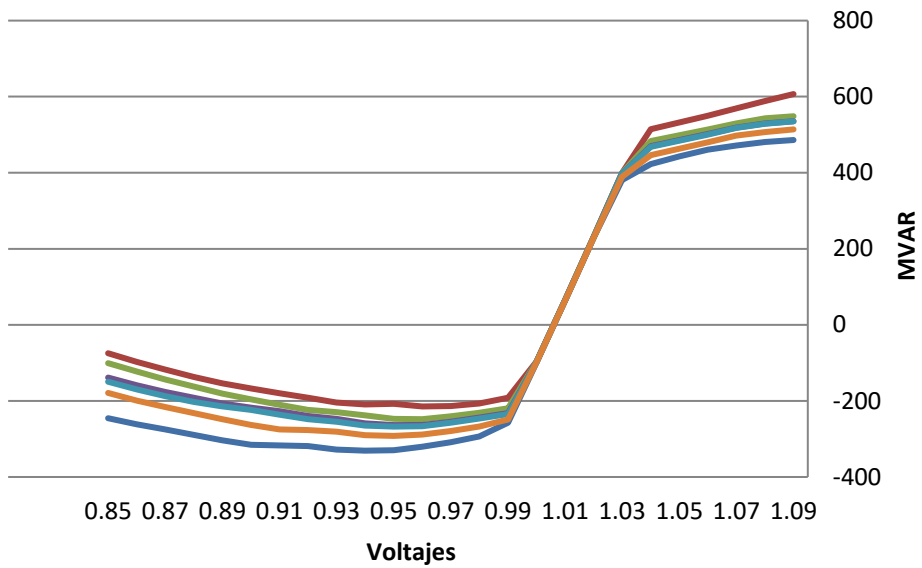
2027 LLUVIOSA

1023-3-2027CA_ModMax_Lluv Nodo: 6001



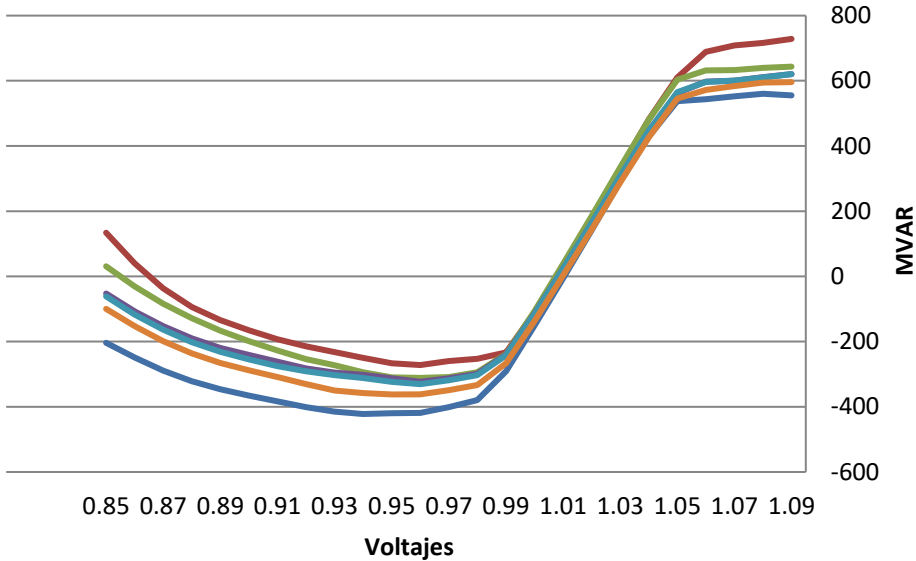
- BASE CASE
- VLTAGE 6460-6713(2C)
- VLTAGE 6005-6596(0A)
- VLTAGE 6837-6840(1)
- VLTAGE 6005-6830(9A)
- VLTAGE 6008-6240(3C)

1023-3-2027CA_ModMax_Lluv Nodo: 6002



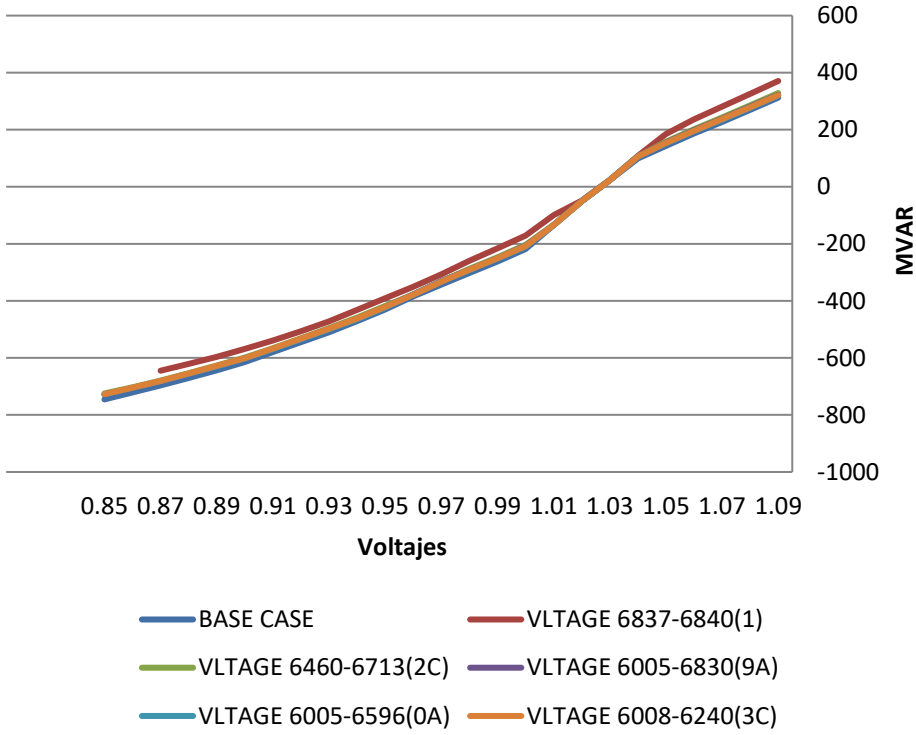
- BASE CASE
- VLTAGE 6460-6713(2C)
- VLTAGE 6005-6596(0A)
- VLTAGE 6837-6840(1)
- VLTAGE 6005-6830(9A)
- VLTAGE 6008-6240(3C)

1023-3-2027CA_ModMax_Lluv Nodo: 6005

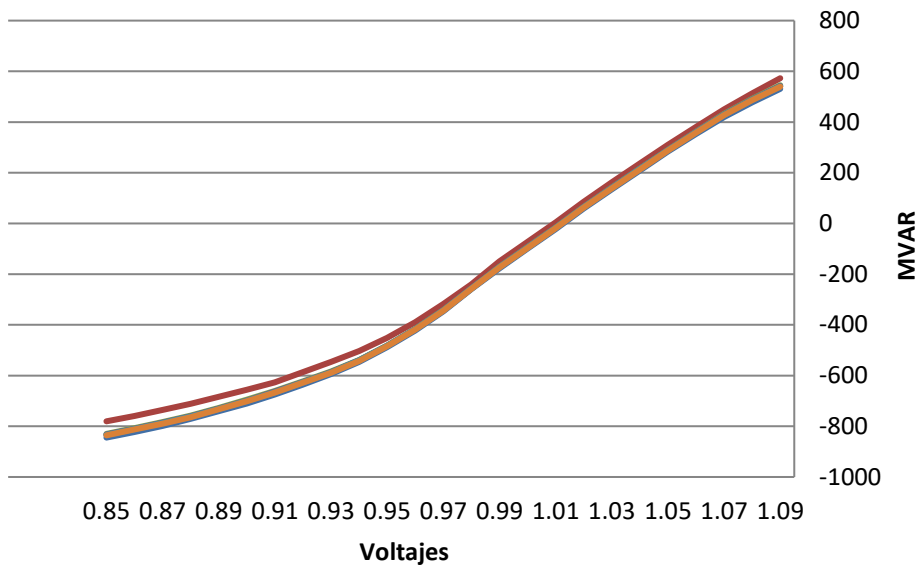


- BASE CASE
- VLTAGE 6460-6713(2C)
- VLTAGE 6005-6596(0A)
- VLTAGE 6837-6840(1)
- VLTAGE 6005-6830(9A)
- VLTAGE 6008-6240(3C)

1023-3-2027CA_ModMax_Lluv Nodo: 6009

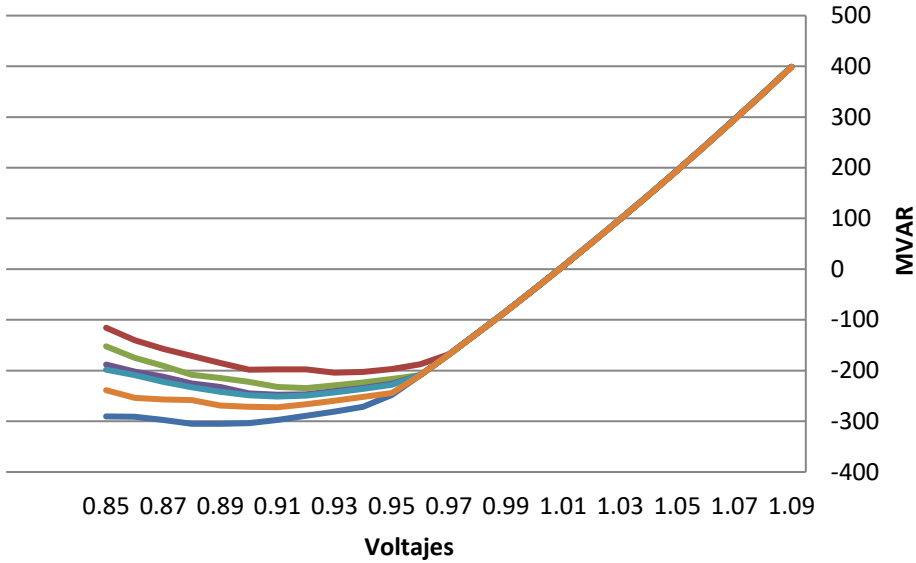


1023-3-2027CA_ModMax_Lluv Nodo: 6011



- BASE CASE
- VLTAGE 6837-6840(1)
- VLTAGE 6460-6713(2C)
- VLTAGE 6005-6830(9A)
- VLTAGE 6005-6596(0A)
- VLTAGE 6008-6240(3C)

1023-3-2027CA_ModMax_Lluv Nodo: 6173

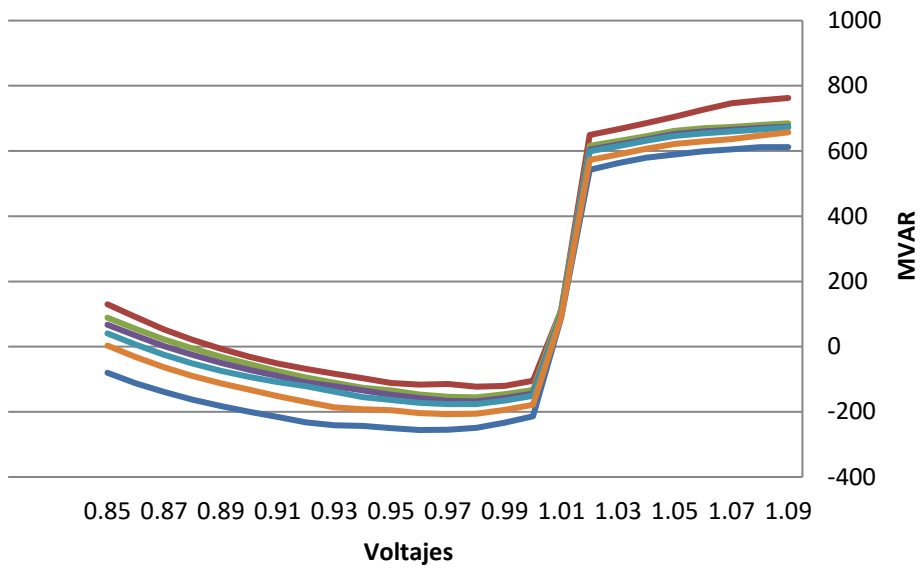


- BASE CASE
- VLTAGE 6460-6713(2C)
- VLTAGE 6005-6830(9A)
- VLTAGE 6005-6596(0A)
- VLTAGE 6837-6840(1)
- VLTAGE 6008-6240(3C)

NODO	BASE CASE	VLTAGE 6837-6840(1)	VLTAGE 6460-6713(2C)	VLTAGE 6005-6830(9A)	VLTAGE 6005-6596(0A)	VLTAGE 6008-6240(3C)
6001	-369.4454956	-235.4876556	-273.5220947	-291.4581909	-295.9230957	-323.3789063
6002	-330.7741699	-214.5491638	-248.0366058	-263.4717712	-267.4666138	-292.006012
6005	-422.0963135	-271.9650269	-311.3282166	-322.9978943	-330.589386	-362.1619568
6009	-745.5032959	-644.8877563	-724.6064453	-728.0354004	-727.4754028	-727.2618408
6011	-844.6060181	-780.4032593	-830.1201782	-832.4225464	-833.9823608	-835.6856079
6173	-304.9743958	-204.1511841	-234.5798798	-247.6742249	-251.244812	-272.3012085

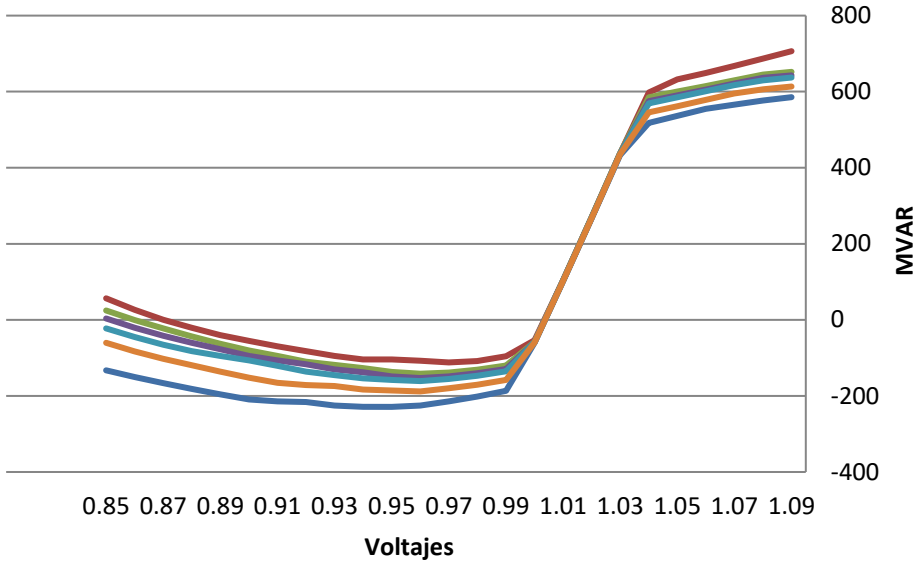
2028 LLUVIOSA

1023-3-2028CA_ModMax_Lluv Nodo: 6001



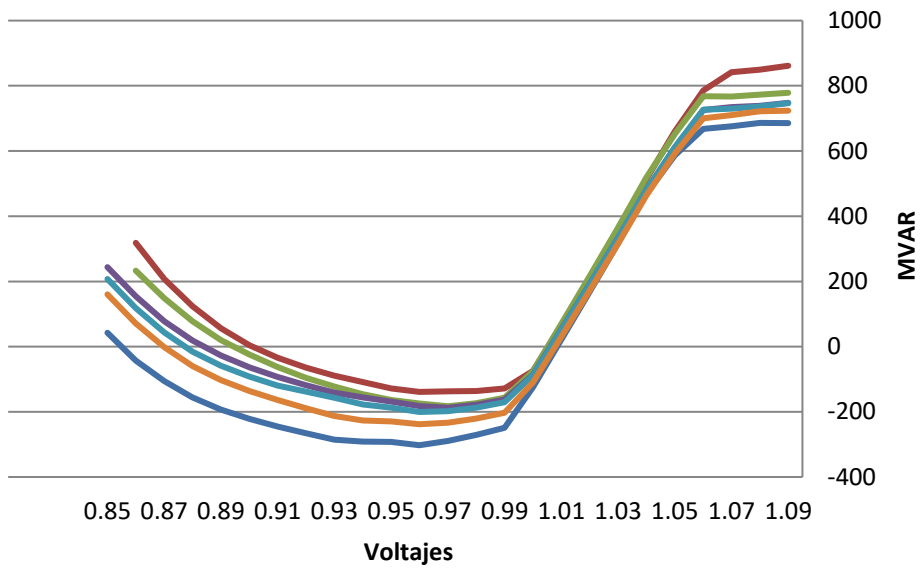
- BASE CASE
- VLTAGE 6460-6713(2C)
- VLTAGE 6005-6596(0A)
- VLTAGE 6837-6840(1)
- VLTAGE 6005-6830(9A)
- VLTAGE 6008-6240(3C)

1023-3-2028CA_ModMax_Lluv Nodo: 6002



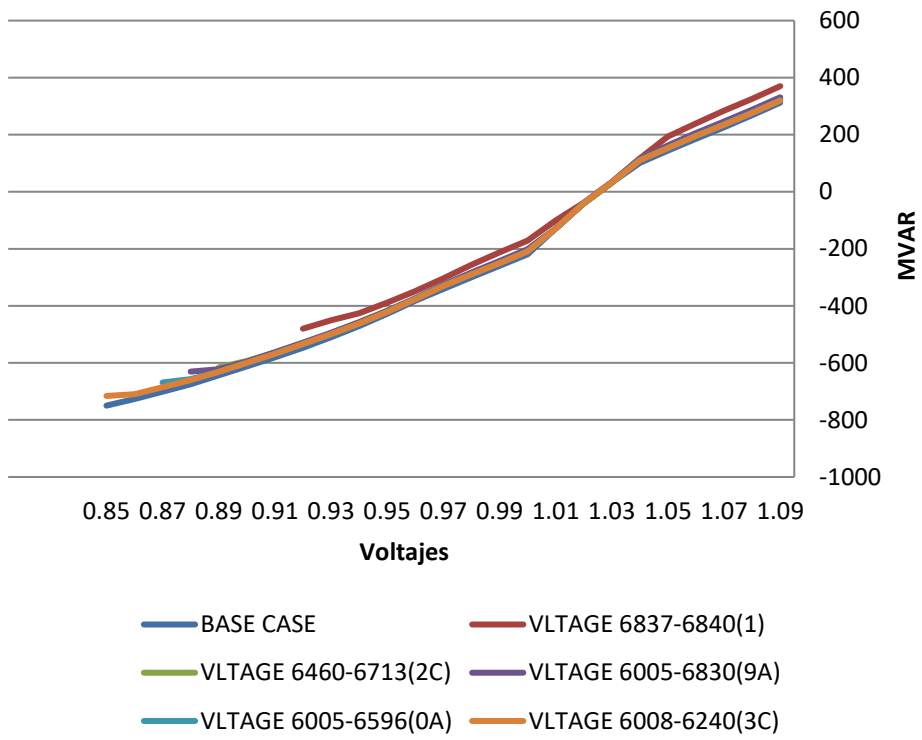
- BASE CASE
- VLTAGE 6460-6713(2C)
- VLTAGE 6005-6596(0A)
- VLTAGE 6837-6840(1)
- VLTAGE 6005-6830(9A)
- VLTAGE 6008-6240(3C)

1023-3-2028CA_ModMax_Lluv Nodo: 6005

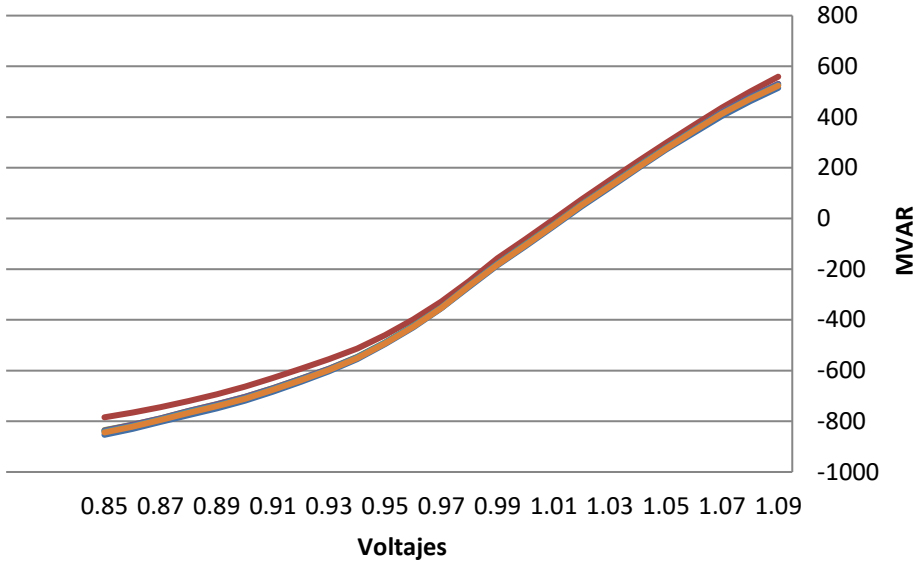


- BASE CASE
- VLTAGE 6460-6713(2C)
- VLTAGE 6005-6830(9A)
- VLTAGE 6005-6596(0A)
- VLTAGE 6008-6240(3C)
- VLTAGE 6837-6840(1)

1023-3-2028CA_ModMax_Lluv Nodo: 6009

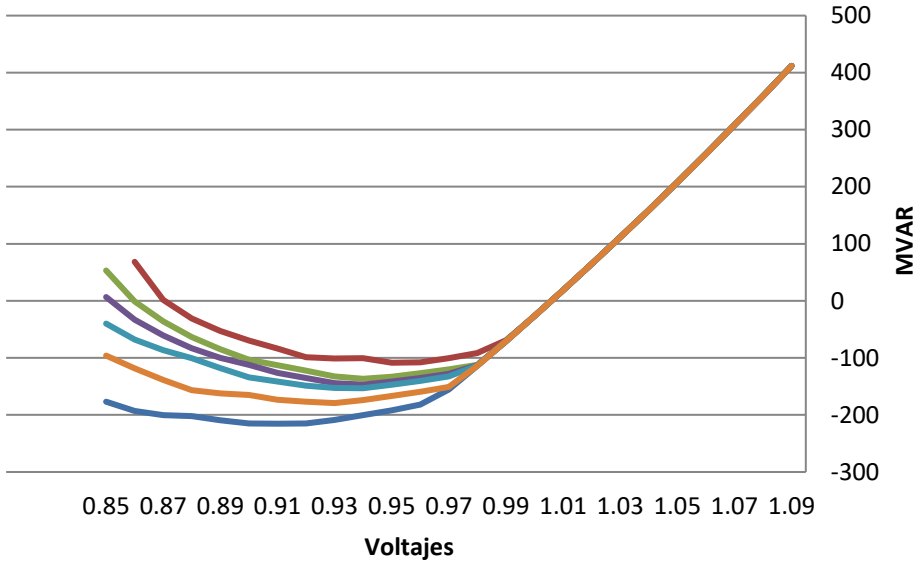


1023-3-2028CA_ModMax_Lluv Nodo: 6011



- BASE CASE
- VLTAGE 6837-6840(1)
- VLTAGE 6460-6713(2C)
- VLTAGE 6005-6830(9A)
- VLTAGE 6005-6596(0A)
- VLTAGE 6008-6240(3C)

1023-3-2028CA_ModMax_Lluv Nodo: 6173

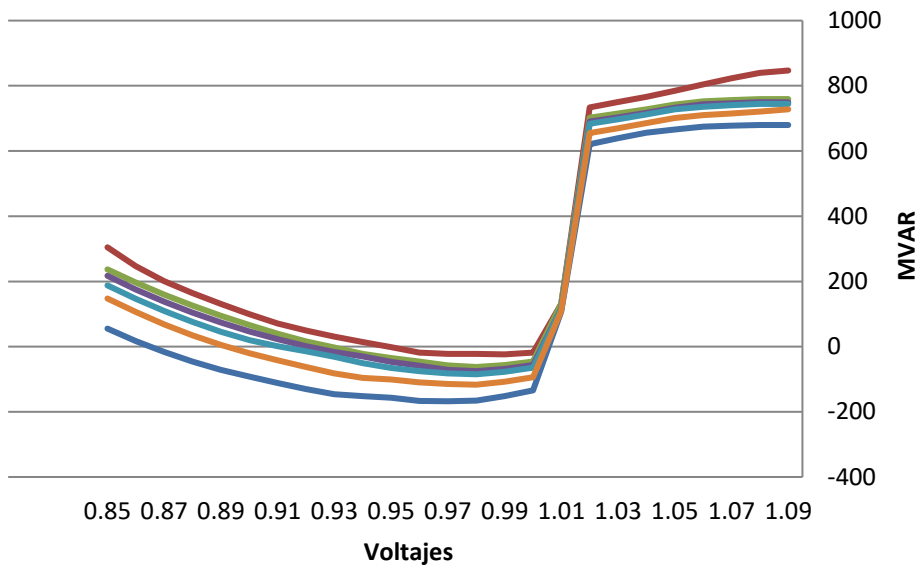


- BASE CASE
- VLTAGE 6837-6840(1)
- VLTAGE 6460-6713(2C)
- VLTAGE 6005-6830(9A)
- VLTAGE 6005-6596(0A)
- VLTAGE 6008-6240(3C)

NODO	BASE CASE	VLTAGE 6837-6840(1)	VLTAGE 6460-6713(2C)	VLTAGE 6005-6830(9A)	VLTAGE 6005-6596(0A)	VLTAGE 6008-6240(3C)
6001	-255.8552094	-122.9588242	-155.7047119	-167.8668671	-176.3183289	-207.3498077
6002	-228.7704773	-111.9168854	-141.556366	-152.969986	-160.9876251	-188.189682
6005	-302.5036926	-138.9366302	-183.0888367	-187.7724457	-200.5795746	-238.1067047
6009	-749.696106	-480.085083	-615.8059692	-630.6159058	-668.5991821	-715.9333496
6011	-853.2826538	-784.3453369	-834.7369385	-836.6063232	-840.7718506	-844.0750122
6173	-215.3638611	-108.4822693	-136.6044159	-146.8439331	-153.1970825	-179.2405243

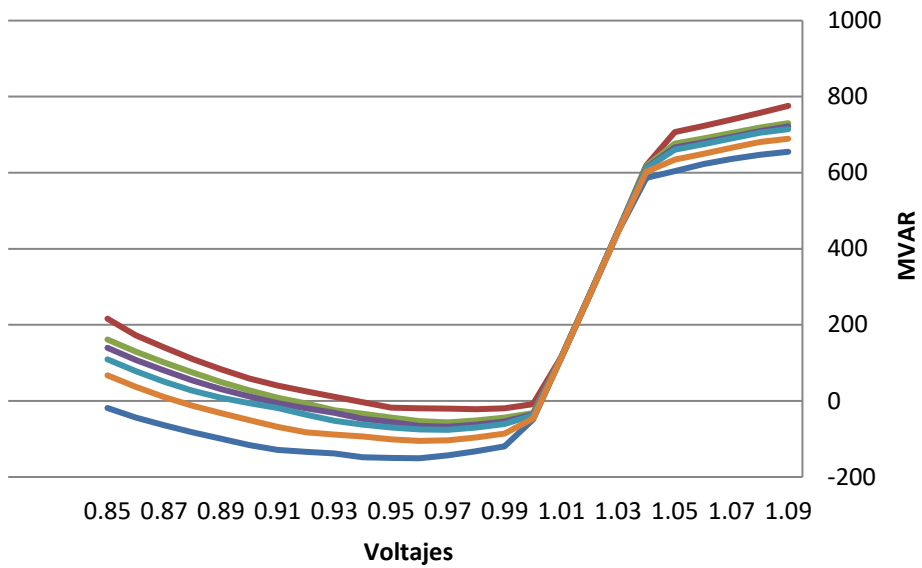
2029 LLUVIOSA

1023-3-2029CA_ModMax_Lluv Nodo: 6001



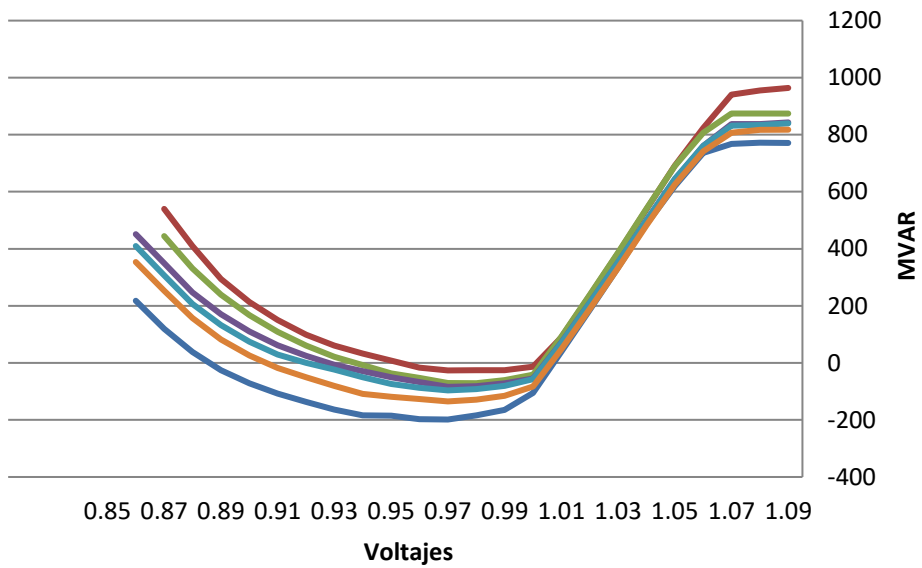
- BASE CASE
- VLTAGE 6460-6713(2C)
- VLTAGE 6005-6596(0A)
- VLTAGE 6837-6840(1)
- VLTAGE 6005-6830(9A)
- VLTAGE 6008-6240(3C)

1023-3-2029CA_ModMax_Lluv Nodo: 6002



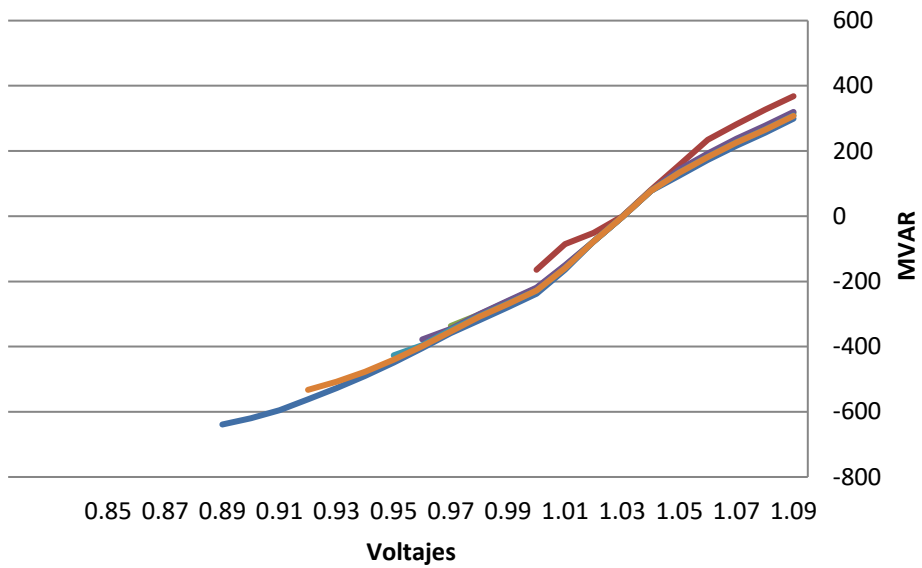
- BASE CASE
- VLTAGE 6460-6713(2C)
- VLTAGE 6005-6830(9A)
- VLTAGE 6005-6596(0A)
- VLTAGE 6008-6240(3C)
- VLTAGE 6837-6840(1)

1023-3-2029CA_ModMax_Lluv Nodo: 6005



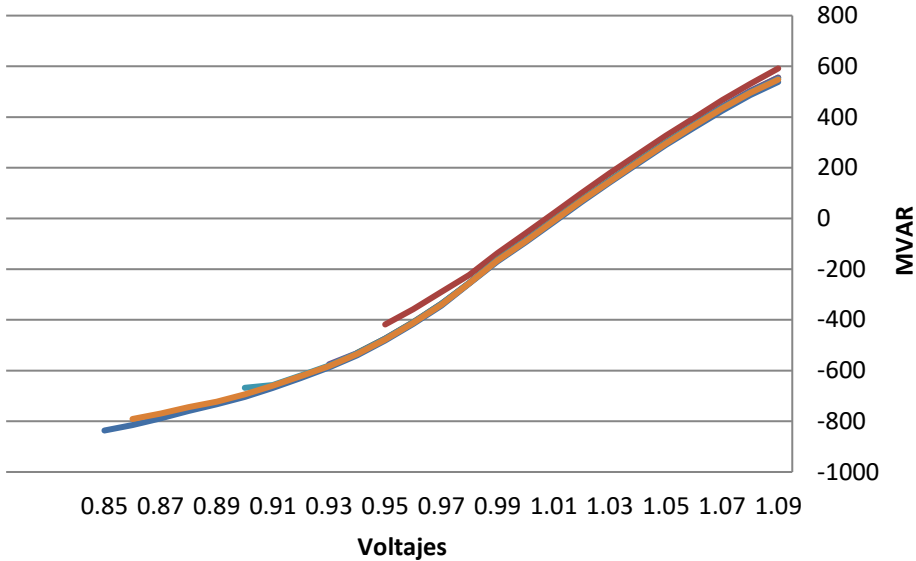
- BASE CASE
- VLTAGE 6837-6840(1)
- VLTAGE 6460-6713(2C)
- VLTAGE 6005-6830(9A)
- VLTAGE 6005-6596(0A)
- VLTAGE 6008-6240(3C)

1023-3-2029CA_ModMax_Lluv Nodo: 6009



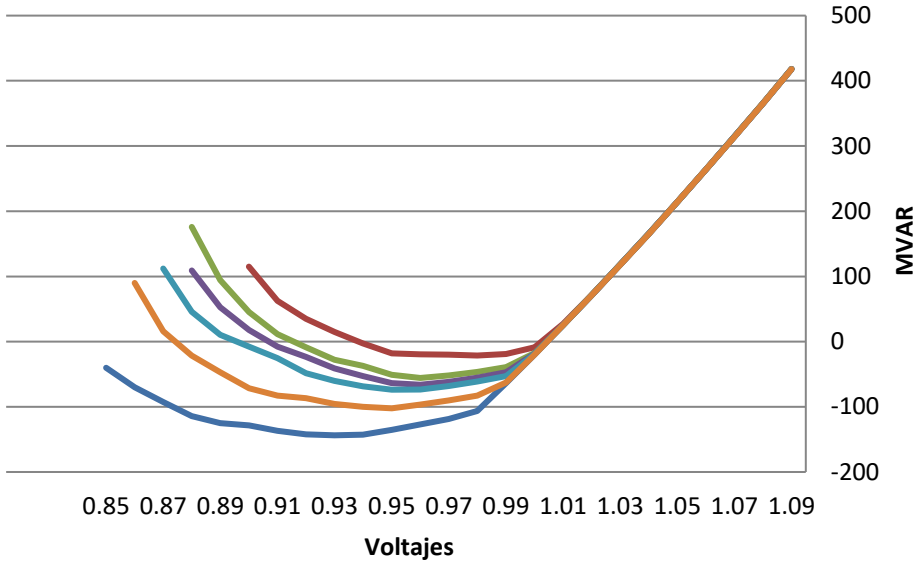
- BASE CASE
- VLTAGE 6837-6840(1)
- VLTAGE 6460-6713(2C)
- VLTAGE 6005-6830(9A)
- VLTAGE 6005-6596(0A)
- VLTAGE 6008-6240(3C)

1023-3-2029CA_ModMax_Lluv Nodo: 6011



- BASE CASE
- VLTAGE 6460-6713(2C)
- VLTAGE 6005-6596(0A)
- VLTAGE 6837-6840(1)
- VLTAGE 6005-6830(9A)
- VLTAGE 6008-6240(3C)

1023-3-2029CA_ModMax_Lluv Nodo: 6173

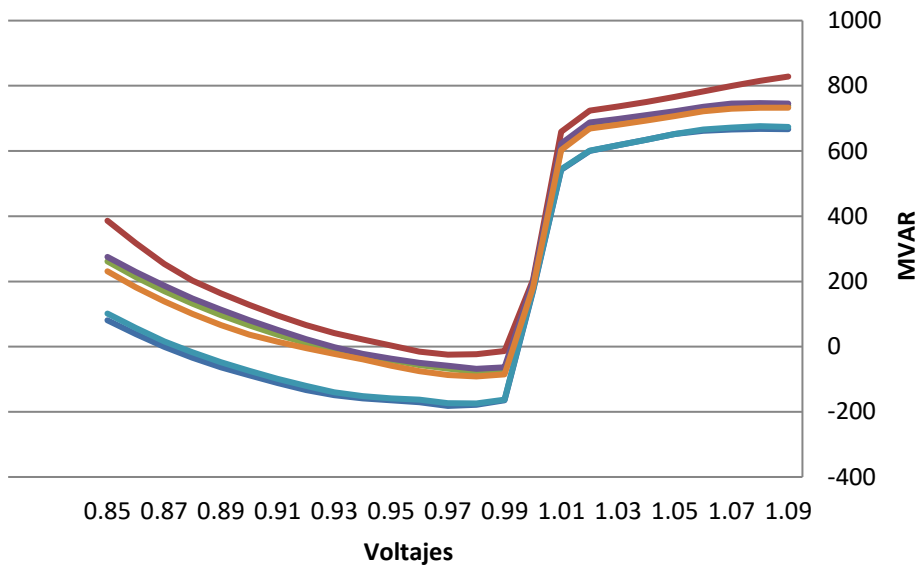


- BASE CASE
- VLTAGE 6460-6713(2C)
- VLTAGE 6005-6830(9A)
- VLTAGE 6005-6596(0A)
- VLTAGE 6837-6840(1)
- VLTAGE 6008-6240(3C)

NODO	BASE CASE	VLTAGE 6837-6840(1)	VLTAGE 6460-6713(2C)	VLTAGE 6005-6830(9A)	VLTAGE 6005-6596(0A)	VLTAGE 6008-6240(3C)
6001	-167.6560211	-23.8336525	-62.56917191	-75.33796692	-84.96781158	-116.8791275
6002	-150.7445526	-21.7781353	-56.38567734	-67.68896484	-76.06643677	-105.1197968
6005	-198.5445099	-26.35089111	-71.20910645	-83.91248322	-96.41281128	-135.0390625
6009	-638.9161377	-164.4020386	-336.763855	-378.1266785	-426.7702026	-532.6310425
6011	-836.4299927	-418.1801453	-530.1034546	-575.1746216	-667.9799194	-790.9581909
6173	-143.7553406	-21.35123825	-55.75954437	-66.18190002	-73.76999664	-102.3287811

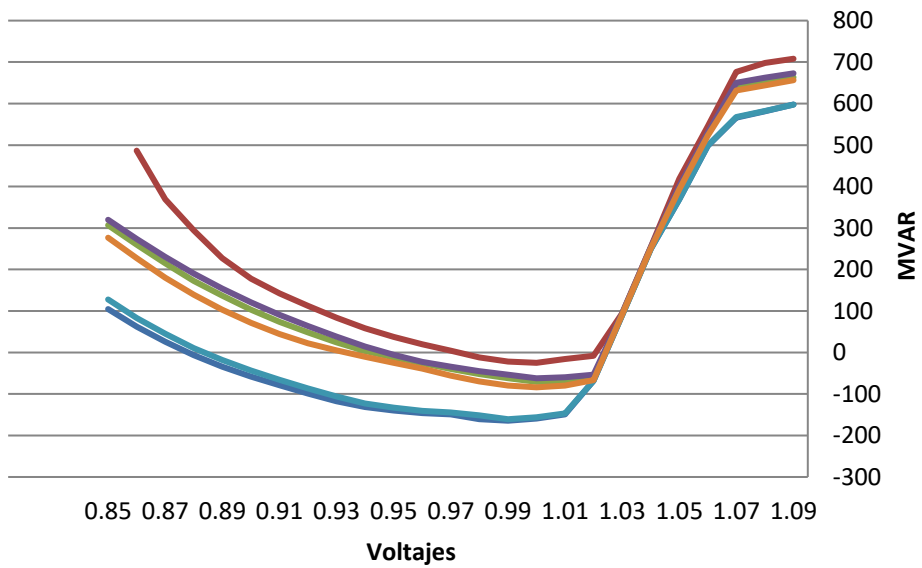
2030 LLUVIOSA

1023-3-2030CA_ModMax_Lluv1- 230kV+BC Nodo: 6001



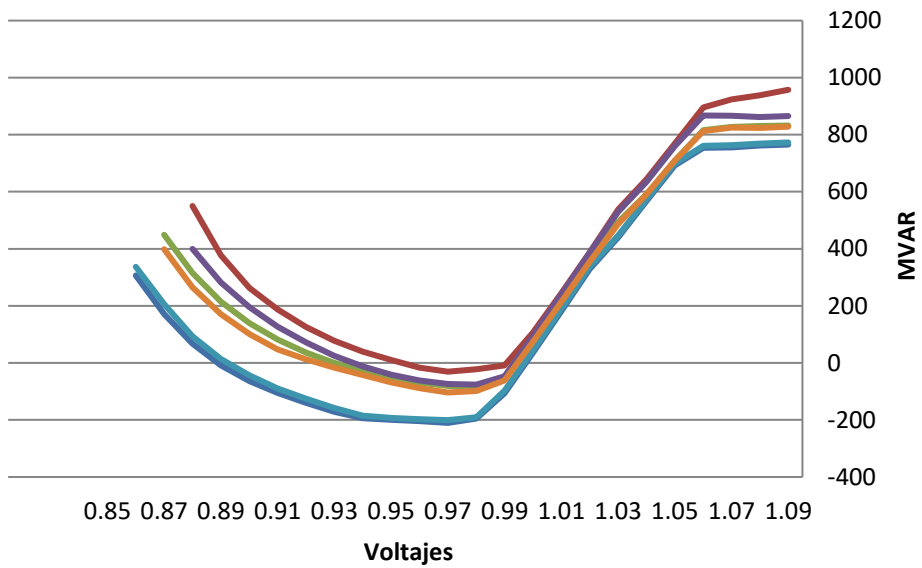
- BASE CASE
- VLTAGE 6837-6840(1)
- VLTAGE 6005-6830(9A)
- VLTAGE 6460-6713(2C)
- VLTAGE 6096-6837(0A)
- VLTAGE 6005-6596(0A)

1023-3-2030CA_ModMax_Lluv1- 230kV+BC Nodo: 6002



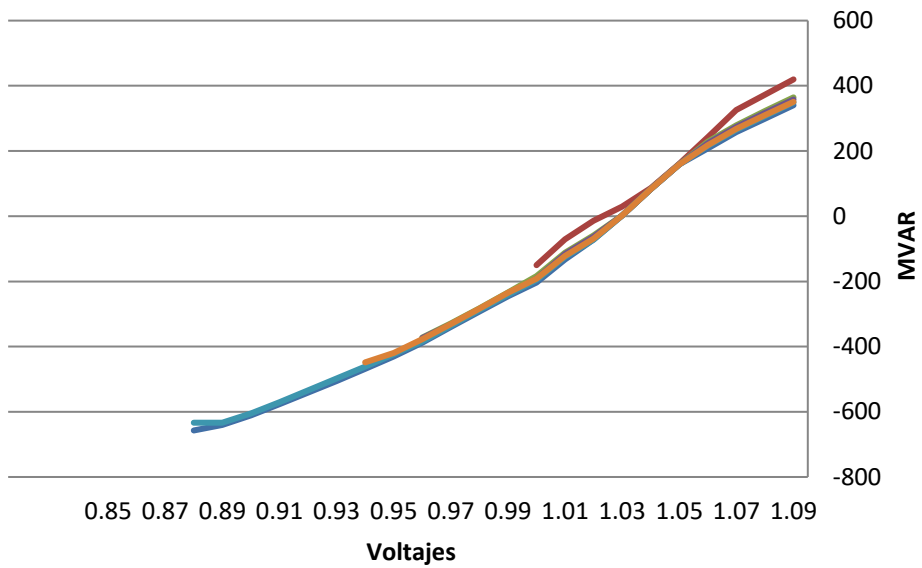
- BASE CASE
- VLTAGE 6005-6830(9A)
- VLTAGE 6096-6837(0A)
- VLTAGE 6837-6840(1)
- VLTAGE 6460-6713(2C)
- VLTAGE 6005-6596(0A)

1023-3-2030CA_ModMax_Lluv1- 230kV+BC Nodo: 6005



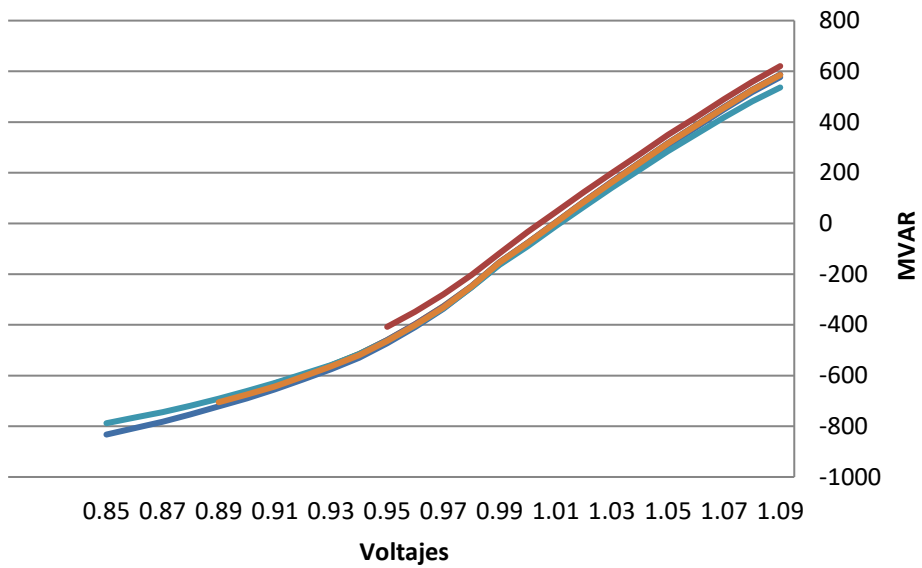
- BASE CASE
- VLTAGE 6005-6830(9A)
- VLTAGE 6096-6837(0A)
- VLTAGE 6837-6840(1)
- VLTAGE 6460-6713(2C)
- VLTAGE 6005-6596(0A)

1023-3-2030CA_ModMax_Lluv1- 230kV+BC Nodo: 6009



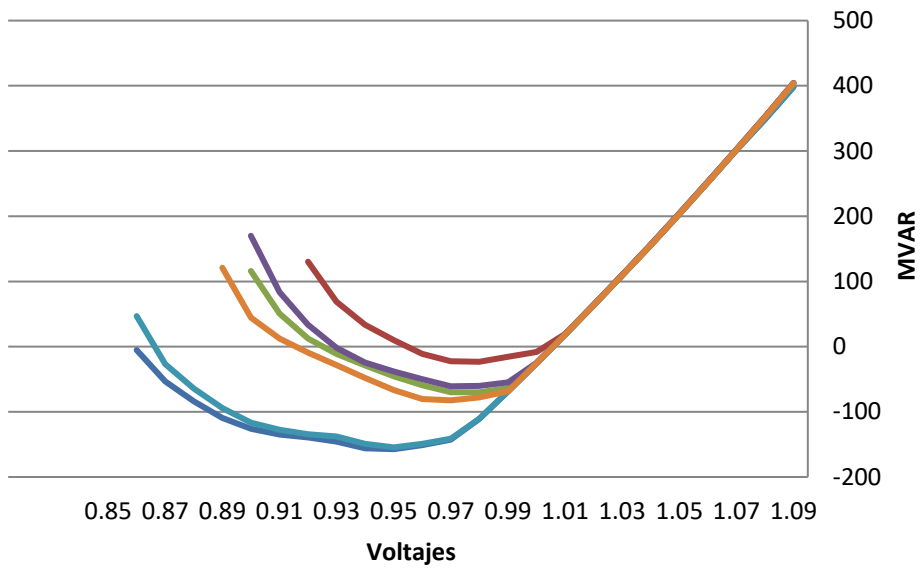
- BASE CASE
- VLTAGE 6837-6840(1)
- VLTAGE 6005-6830(9A)
- VLTAGE 6460-6713(2C)
- VLTAGE 6096-6837(0A)
- VLTAGE 6005-6596(0A)

1023-3-2030CA_ModMax_Lluv1- 230kV+BC Nodo: 6011



- BASE CASE
- VLTAGE 6005-6830(9A)
- VLTAGE 6096-6837(0A)
- VLTAGE 6837-6840(1)
- VLTAGE 6460-6713(2C)
- VLTAGE 6005-6596(0A)

1023-3-2030CA_ModMax_Lluv1- 230kV+BC Nodo: 6173

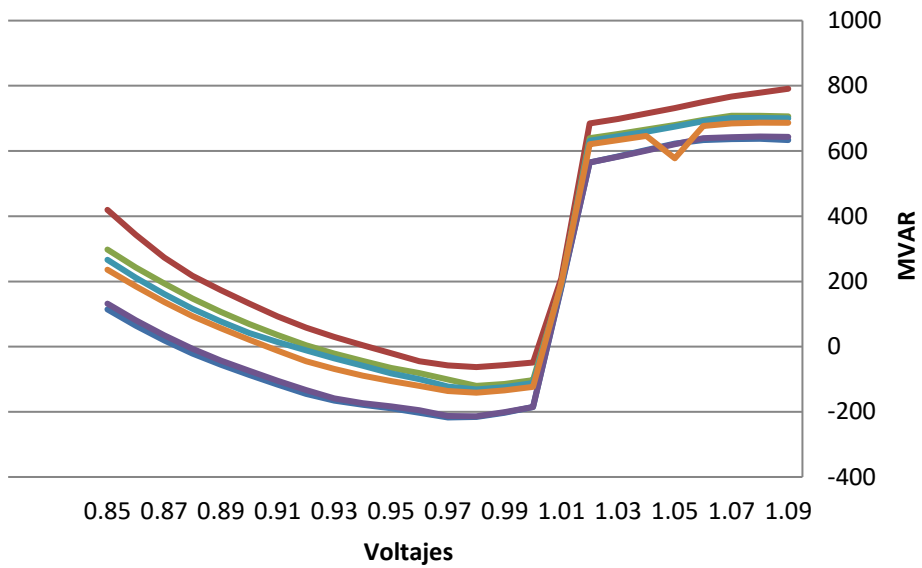


- BASE CASE
- VLTAGE 6005-6830(9A)
- VLTAGE 6096-6837(0A)
- VLTAGE 6837-6840(1)
- VLTAGE 6460-6713(2C)
- VLTAGE 6005-6596(0A)

NODO	BASE CASE	VLTAGE 6837-6840(1)	VLTAGE 6005-6830(9A)	VLTAGE 6460-6713(2C)	VLTAGE 6096-6837(0A)	VLTAGE 6005-6596(0A)
6001	-182.0122528	-24.71916008	-77.54655457	-68.22768402	-174.4316864	-91.58969879
6002	-164.3478394	-24.84659958	-70.56820679	-62.11865616	-160.7291718	-83.91189575
6005	-210.3789978	-30.78111458	-86.15635681	-76.12524414	-200.5890198	-103.830101
6009	-657.2765503	-150.1972198	-372.4079285	-373.9575195	-633.4696045	-448.3990784
6011	-832.586792	-407.8029175	-663.9525146	-630.7233887	-787.9136353	-705.1737061
6173	-157.3131866	-23.28055954	-70.03450012	-60.8626976	-154.5861969	-82.42523956

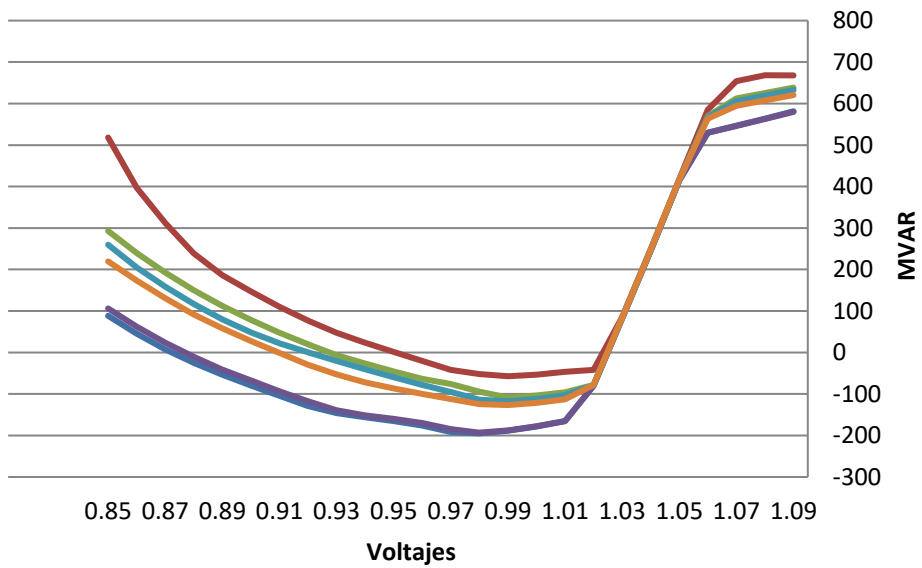
2031 LLUVIOSA

1023-3-2031CA_ModMax_Lluv- 230kV+BC Nodo: 6001



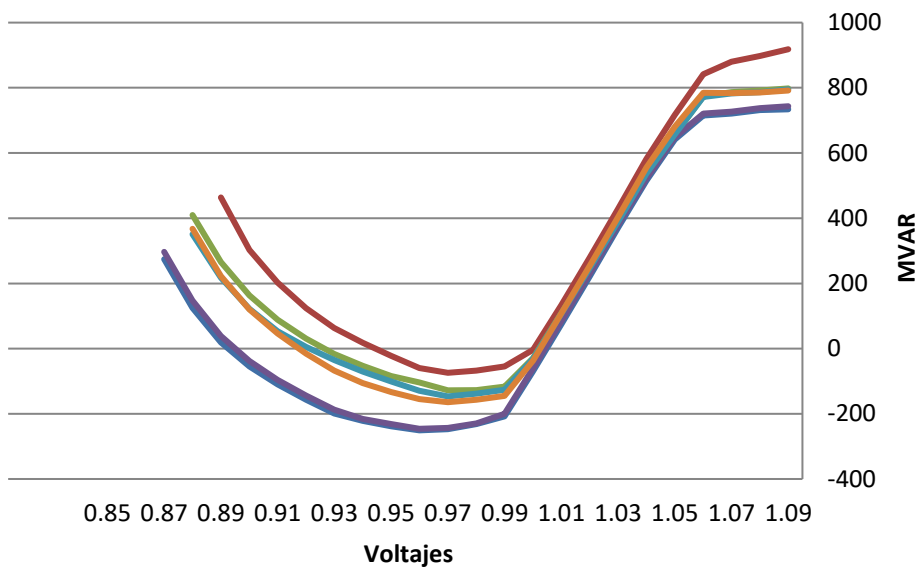
- BASE CASE
- VLTAGE 6005-6830(9A)
- VLTAGE 6005-6596(0A)
- VLTAGE 6096-6837(0A)
- VLTAGE 6713-6741(2C)
- VLTAGE 6837-6840(1)

1023-3-2031CA_ModMax_Lluv- 230kV+BC Nodo: 6002



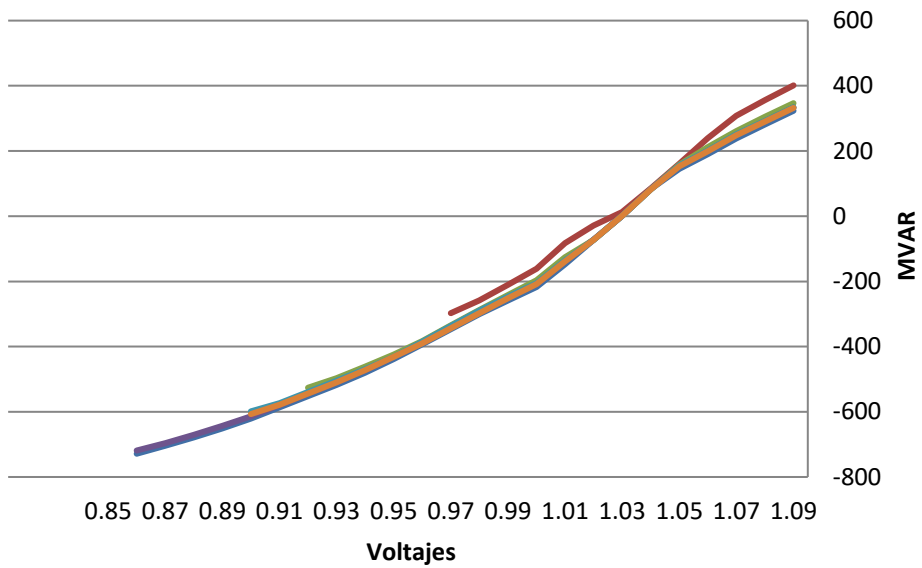
- BASE CASE
- VLTAGE 6005-6830(9A)
- VLTAGE 6005-6596(0A)
- VLTAGE 6096-6837(0A)
- VLTAGE 6713-6741(2C)
- VLTAGE 6837-6840(1)

1023-3-2031CA_ModMax_Lluv- 230kV+BC Nodo: 6005



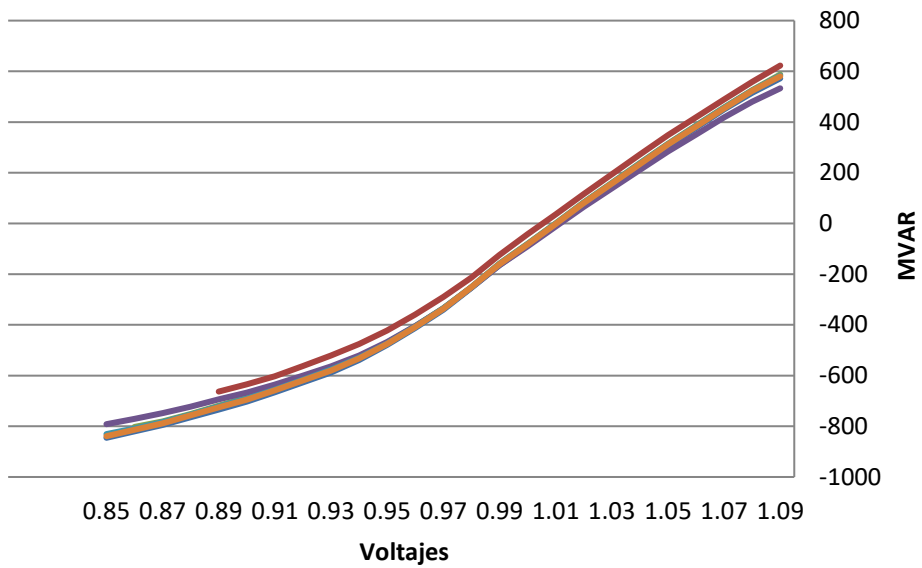
- BASE CASE
- VLTAGE 6005-6830(9A)
- VLTAGE 6096-6837(0A)
- VLTAGE 6005-6596(0A)
- VLTAGE 6713-6741(2C)
- VLTAGE 6837-6840(1)

1023-3-2031CA_ModMax_Lluv- 230kV+BC Nodo: 6009



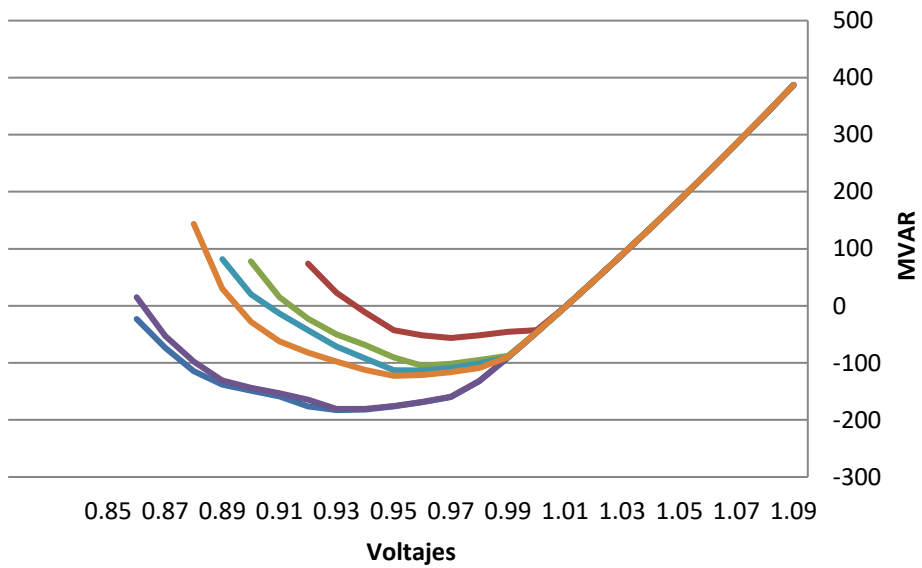
- BASE CASE
- VLTAGE 6005-6830(9A)
- VLTAGE 6096-6837(0A)
- VLTAGE 6005-6596(0A)
- VLTAGE 6713-6741(2C)
- VLTAGE 6837-6840(1)

1023-3-2031CA_ModMax_Lluv- 230kV+BC Nodo: 6011



- BASE CASE
- VLTAGE 6005-6830(9A)
- VLTAGE 6096-6837(0A)
- VLTAGE 6837-6840(1)
- VLTAGE 6005-6596(0A)
- VLTAGE 6713-6741(2C)

1023-3-2031CA_ModMax_Lluv- 230kV+BC Nodo: 6173

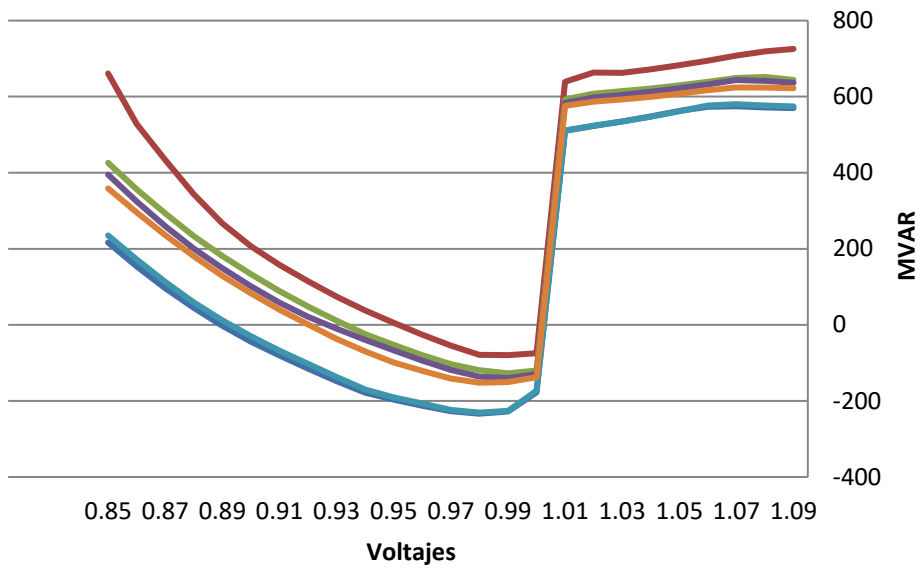


- BASE CASE
- VLTAGE 6005-6830(9A)
- VLTAGE 6096-6837(0A)
- VLTAGE 6005-6596(0A)
- VLTAGE 6837-6840(1)
- VLTAGE 6713-6741(2C)

NODO	BASE CASE	VLTAGE 6837-6840(1)	VLTAGE 6005-6830(9A)	VLTAGE 6096-6837(0A)	VLTAGE 6005-6596(0A)	VLTAGE 6713-6741(2C)
6001	-217.399292	-62.90653992	-120.5054398	-213.7996368	-131.4128418	-141.3893127
6002	-195.0329132	-57.13171387	-108.5172653	-193.0740814	-117.8132553	-126.6265717
6005	-250.8248291	-74.23857117	-127.967308	-246.0195618	-146.6371002	-164.4492798
6009	-728.5936279	-297.4407349	-526.1896362	-718.8377686	-598.687439	-607.0222168
6011	-845.4717407	-663.1199341	-802.6182251	-791.6495972	-830.8198242	-838.9940186
6173	-182.7263641	-56.33773804	-104.9130783	-180.6870575	-113.2483368	-122.6705399

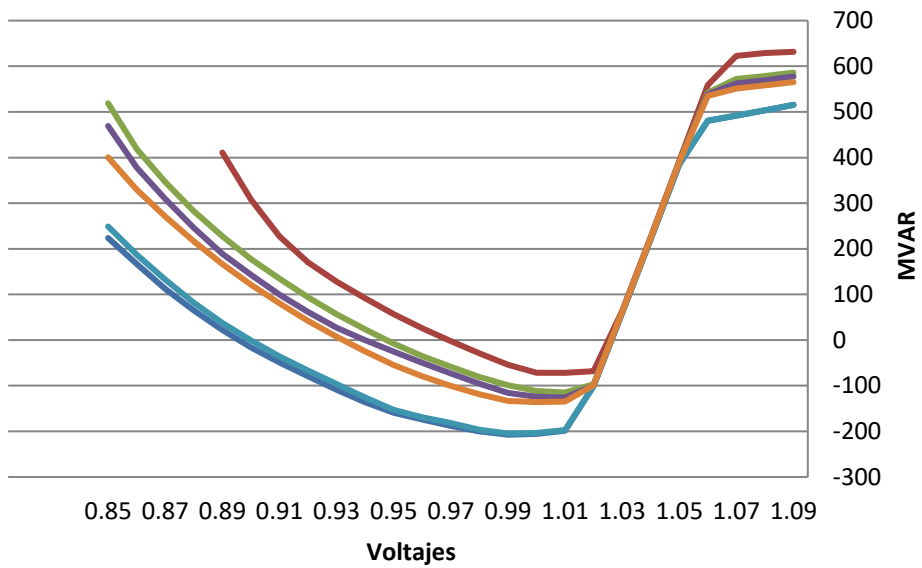
2033 LLUVIOSA

1023-3-2033CA_ModMax_Lluv- 230kV+BC Nodo: 6001



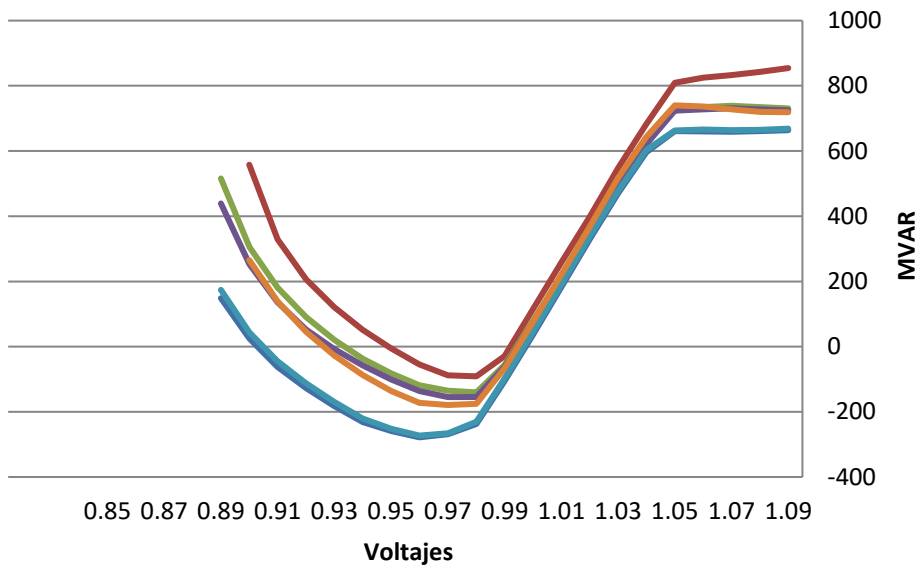
- BASE CASE
- VLTAGE 6005-6830(9A)
- VLTAGE 6096-6837(0A)
- VLTAGE 6837-6840(1)
- VLTAGE 6005-6596(0A)
- VLTAGE 6713-6741(2C)

1023-3-2033CA_ModMax_Lluv- 230kV+BC Nodo: 6002



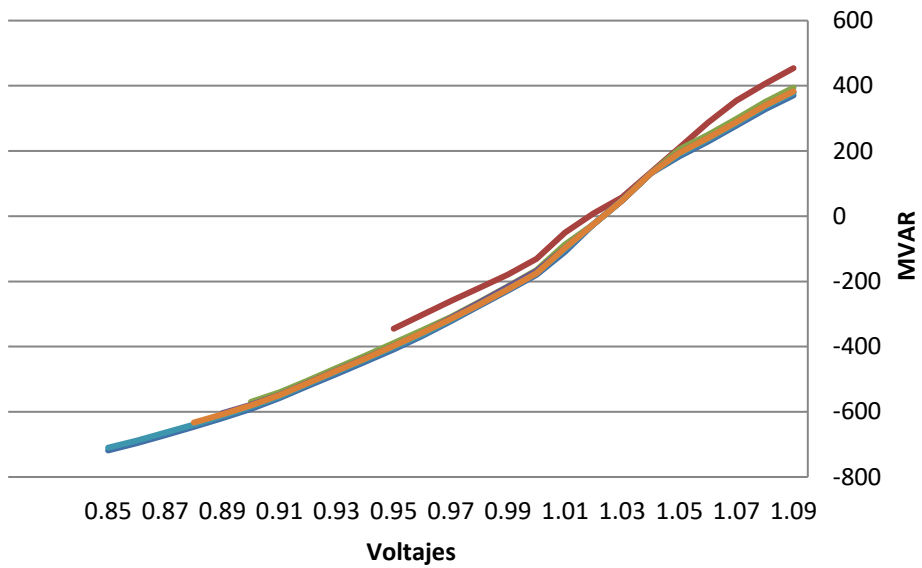
- BASE CASE
- VLTAGE 6005-6830(9A)
- VLTAGE 6005-6596(0A)
- VLTAGE 6096-6837(0A)
- VLTAGE 6713-6741(2C)
- VLTAGE 6837-6840(1)

1023-3-2033CA_ModMax_Lluv- 230kV+BC Nodo: 6005



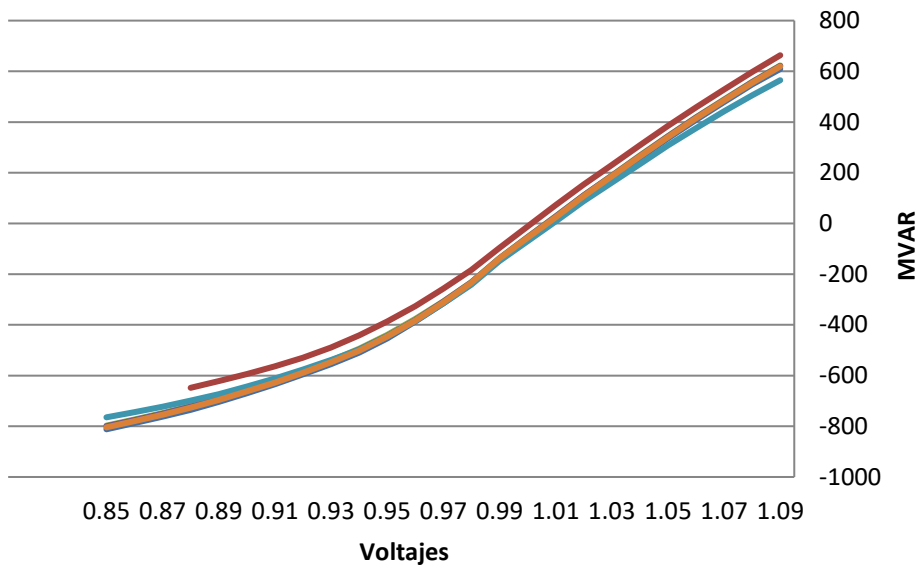
- BASE CASE
- VLTAGE 6005-6830(9A)
- VLTAGE 6096-6837(0A)
- VLTAGE 6837-6840(1)
- VLTAGE 6005-6596(0A)
- VLTAGE 6713-6741(2C)

1023-3-2033CA_ModMax_Lluv- 230kV+BC Nodo: 6009



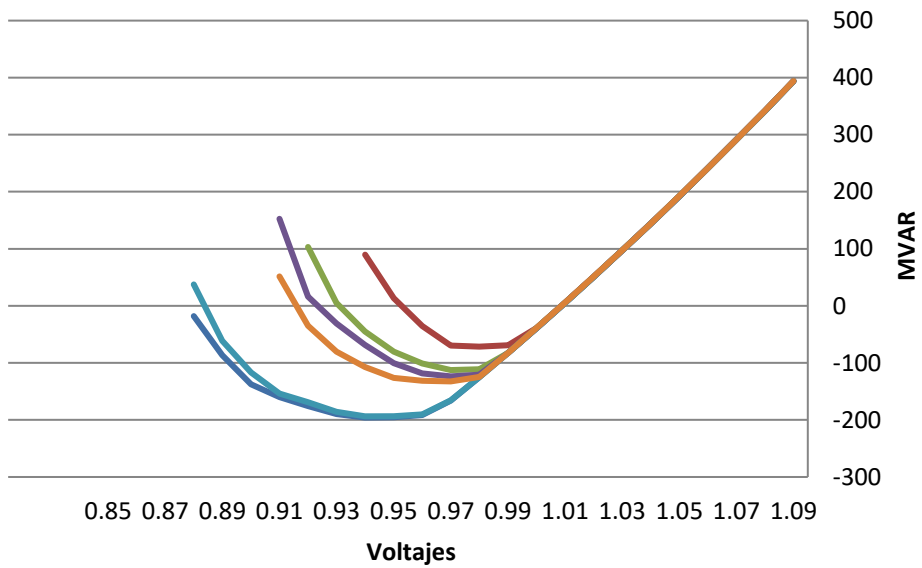
- BASE CASE
- VLTAGE 6837-6840(1)
- VLTAGE 6005-6830(9A)
- VLTAGE 6005-6596(0A)
- VLTAGE 6096-6837(0A)
- VLTAGE 6713-6741(2C)

1023-3-2033CA_ModMax_Lluv- 230kV+BC Nodo: 6011



- BASE CASE
- VLTAGE 6837-6840(1)
- VLTAGE 6005-6830(9A)
- VLTAGE 6005-6596(0A)
- VLTAGE 6096-6837(0A)
- VLTAGE 6713-6741(2C)

1023-3-2033CA_ModMax_Lluv- 230kV+BC Nodo: 6173

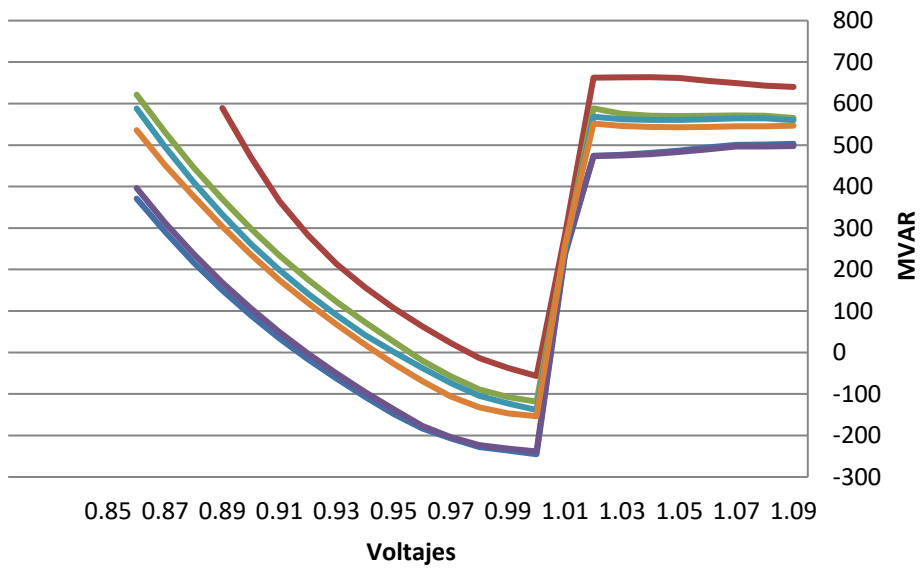


- BASE CASE
- VLTAGE 6005-6830(9A)
- VLTAGE 6005-6596(0A)
- VLTAGE 6096-6837(0A)
- VLTAGE 6837-6840(1)
- VLTAGE 6713-6741(2C)

NODO	BASE CASE	VLTAGE 6837-6840(1)	VLTAGE 6005-6830(9A)	VLTAGE 6005-6596(0A)	VLTAGE 6096-6837(0A)	VLTAGE 6713-6741(2C)
6001	-233.5841217	-79.52500916	-127.3475876	-139.9342041	-230.5877228	-152.0522156
6002	-207.2926331	-71.74259186	-114.8791351	-125.9093781	-204.7462006	-135.9109802
6005	-278.318634	-91.29505157	-140.4668274	-154.6958771	-273.024353	-179.1233521
6009	-718.5219116	-345.0218506	-569.6280518	-604.2681274	-710.1358643	-633.0390625
6011	-811.9181519	-648.3167114	-797.5061035	-800.0181885	-764.6622925	-804.0435791
6173	-195.856781	-71.47173309	-112.537468	-123.6366882	-193.4931641	-132.4814758

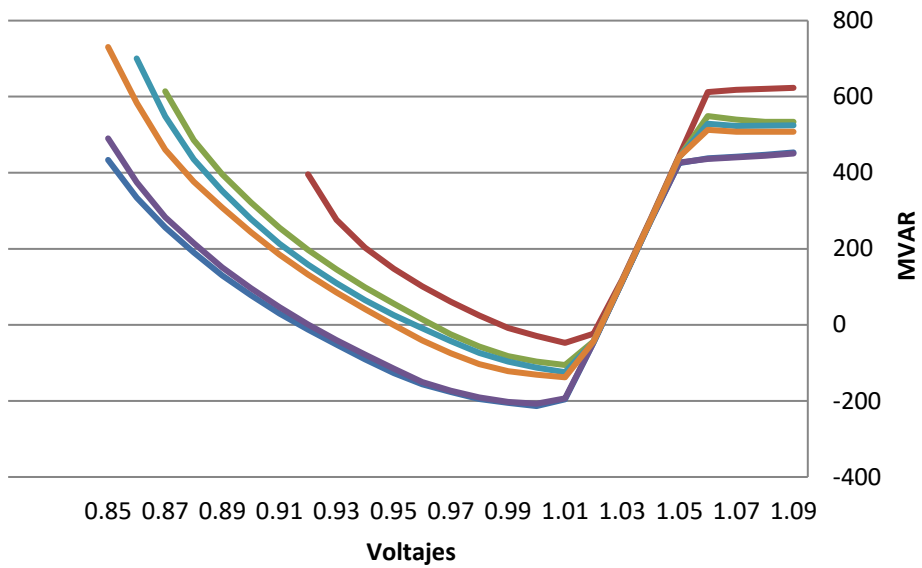
2035 LLUVIOSA

1023-3-2035CA_ModMax_Lluv- 230kV+BC Nodo: 6001



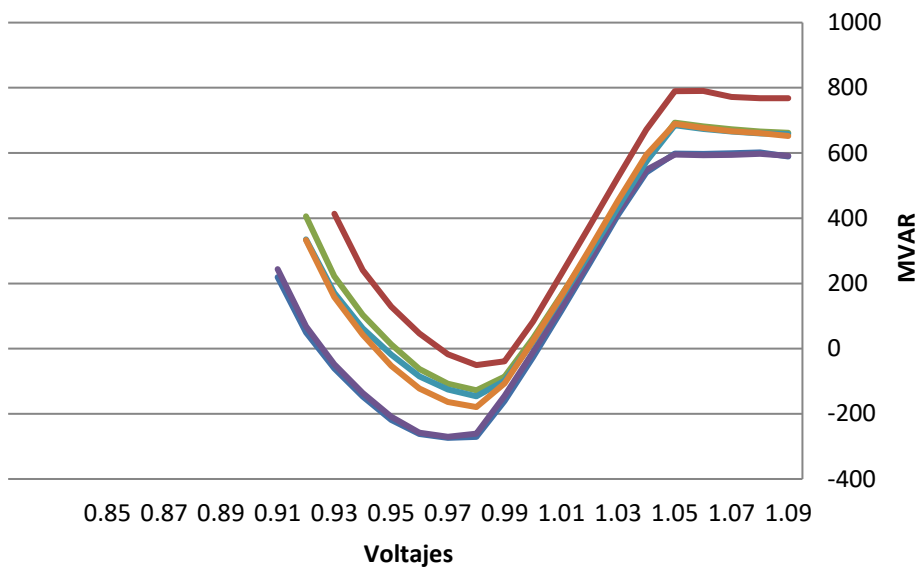
- BASE CASE
- VLTAGE 6005-6830(9A)
- VLTAGE 6005-6596(0A)
- VLTAGE 6096-6837(0A)
- VLTAGE 6713-6741(2C)
- VLTAGE 6837-6840(1)

1023-3-2035CA_ModMax_Lluv- 230kV+BC Nodo: 6002



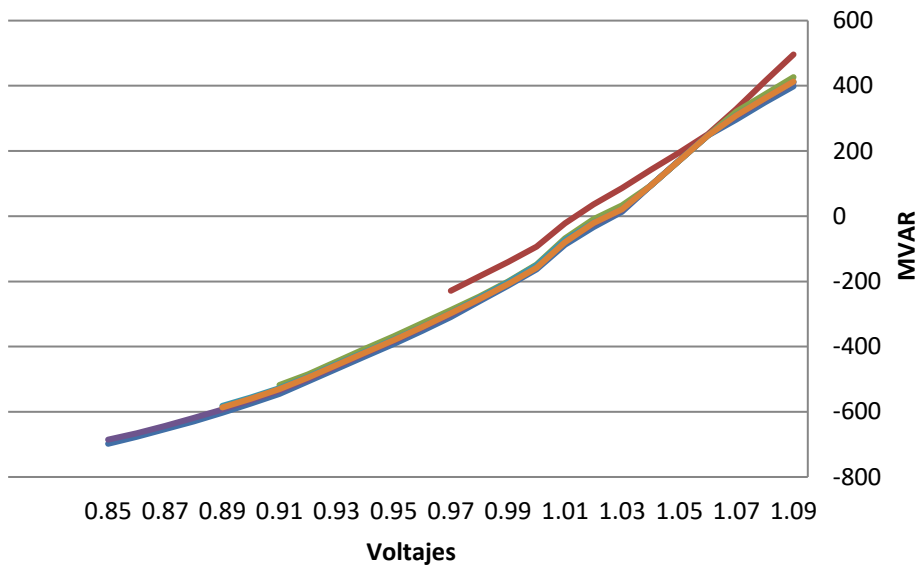
- BASE CASE
- VLTAGE 6837-6840(1)
- VLTAGE 6005-6830(9A)
- VLTAGE 6096-6837(0A)
- VLTAGE 6005-6596(0A)
- VLTAGE 6713-6741(2C)

1023-3-2035CA_ModMax_Lluv- 230kV+BC Nodo: 6005



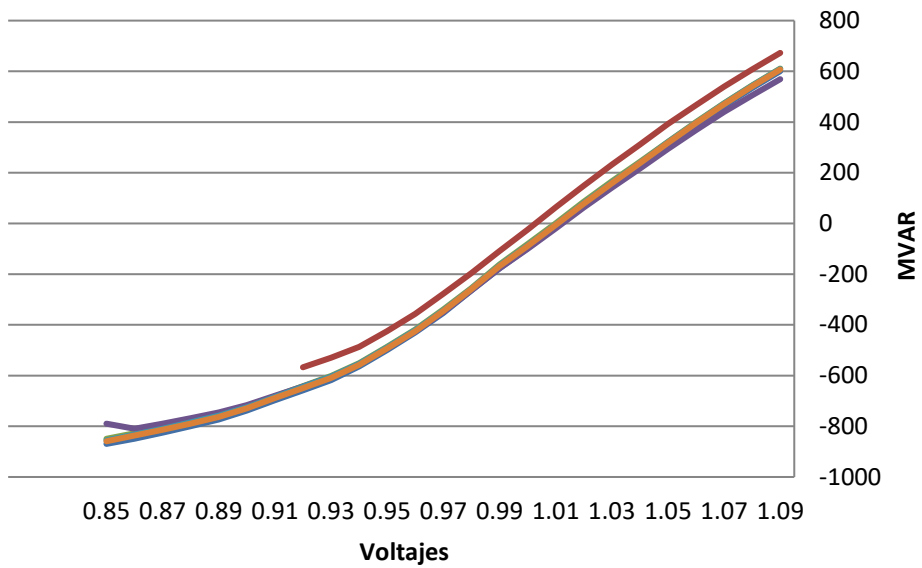
- BASE CASE
- VLTAGE 6005-6830(9A)
- VLTAGE 6096-6837(0A)
- VLTAGE 6005-6596(0A)
- VLTAGE 6713-6741(2C)
- VLTAGE 6837-6840(1)

1023-3-2035CA_ModMax_Lluv- 230kV+BC Nodo: 6009



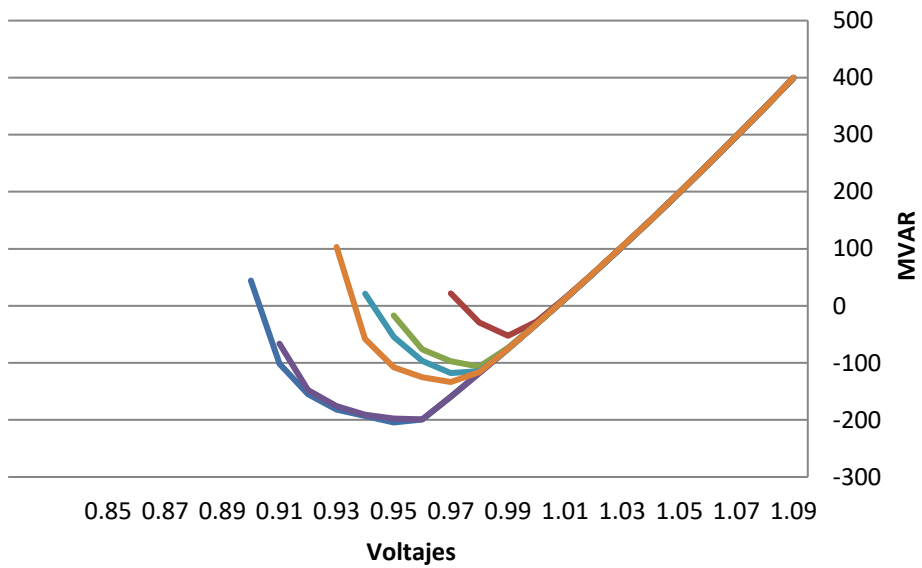
- BASE CASE
- VLTAGE 6837-6840(1)
- VLTAGE 6005-6830(9A)
- VLTAGE 6096-6837(0A)
- VLTAGE 6005-6596(0A)
- VLTAGE 6713-6741(2C)

1023-3-2035CA_ModMax_Lluv- 230kV+BC Nodo: 6011



- BASE CASE
- VLTAGE 6005-6830(9A)
- VLTAGE 6096-6837(0A)
- VLTAGE 6005-6596(0A)
- VLTAGE 6713-6741(2C)
- VLTAGE 6837-6840(1)

1023-3-2035CA_ModMax_Lluv- 230kV+BC Nodo: 6173

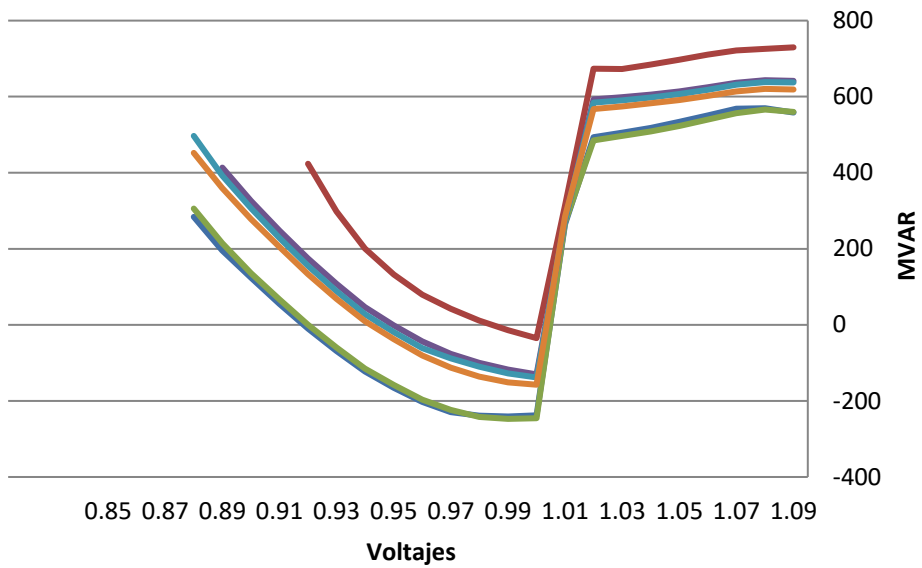


- BASE CASE
- VLTAGE 6005-6830(9A)
- VLTAGE 6005-6596(0A)
- VLTAGE 6096-6837(0A)
- VLTAGE 6837-6840(1)
- VLTAGE 6713-6741(2C)

NODO	BASE CASE	VLTAGE 6837-6840(1)	VLTAGE 6005-6830(9A)	VLTAGE 6096-6837(0A)	VLTAGE 6005-6596(0A)	VLTAGE 6713-6741(2C)
6001	-245.1463623	-56.5666275	-118.4225769	-238.5453491	-138.5195007	-153.4357605
6002	-213.4971619	-47.33919525	-105.5350876	-207.2998352	-124.45961	-137.9219971
6005	-273.8504028	-50.58024597	-127.95298	-270.4994812	-146.2965088	-179.3697662
6009	-698.1060791	-228.7621765	-517.7892456	-685.4343872	-581.8010864	-586.6282959
6011	-869.3822021	-567.2434692	-849.2804565	-809.619812	-855.3674927	-859.1488037
6173	-204.4343719	-52.3926506	-106.5913086	-198.9309235	-117.7929764	-133.5489655

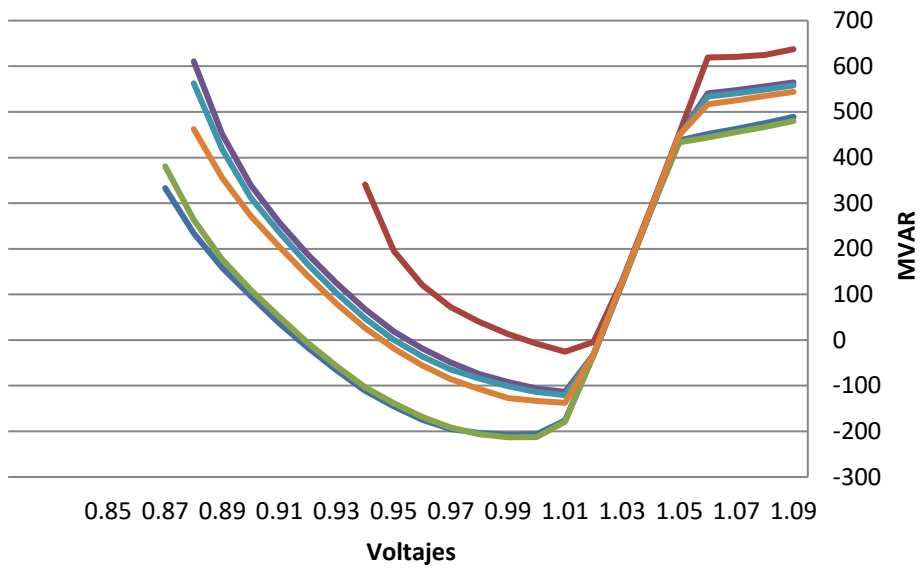
2037 LLUVIOSA

1023-3-2037CA_ModMax_Lluv- 230kV+BC Nodo: 6001



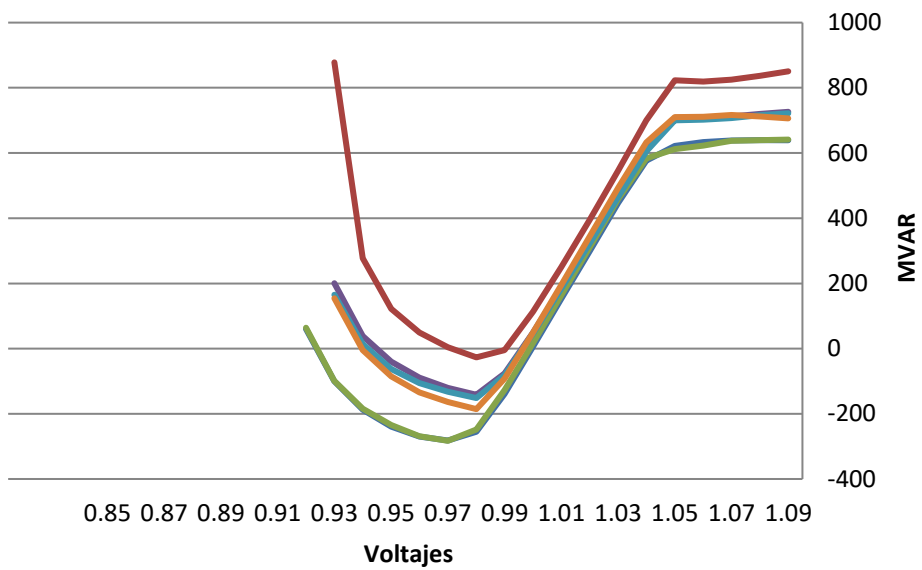
- BASE CASE
- VLTAGE 6096-6837(0A)
- VLTAGE 6005-6596(0A)
- VLTAGE 6837-6840(1)
- VLTAGE 6005-6830(9A)
- VLTAGE 6713-6741(2C)

1023-3-2037CA_ModMax_Lluv- 230kV+BC Nodo: 6002



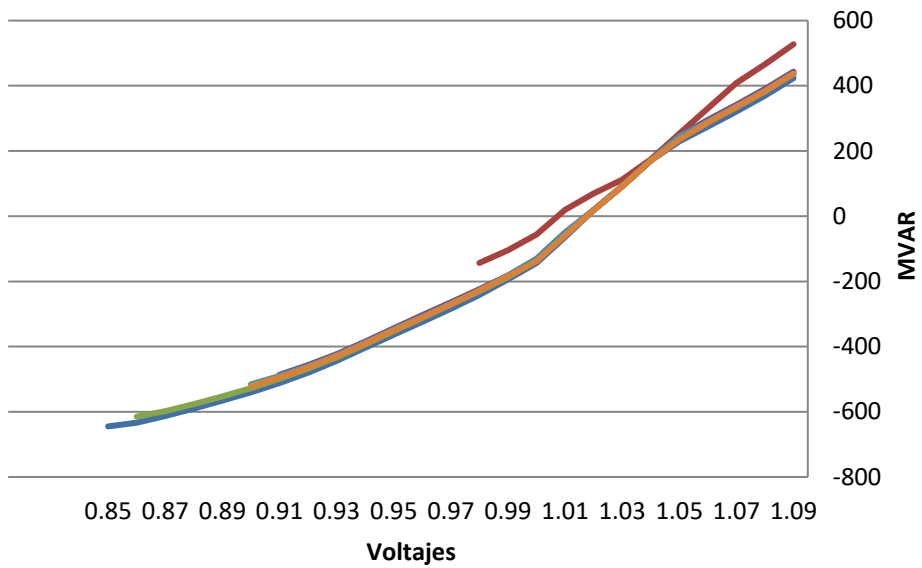
- BASE CASE
- VLTAGE 6096-6837(0A)
- VLTAGE 6005-6596(0A)
- VLTAGE 6837-6840(1)
- VLTAGE 6005-6830(9A)
- VLTAGE 6713-6741(2C)

1023-3-2037CA_ModMax_Lluv- 230kV+BC Nodo: 6005



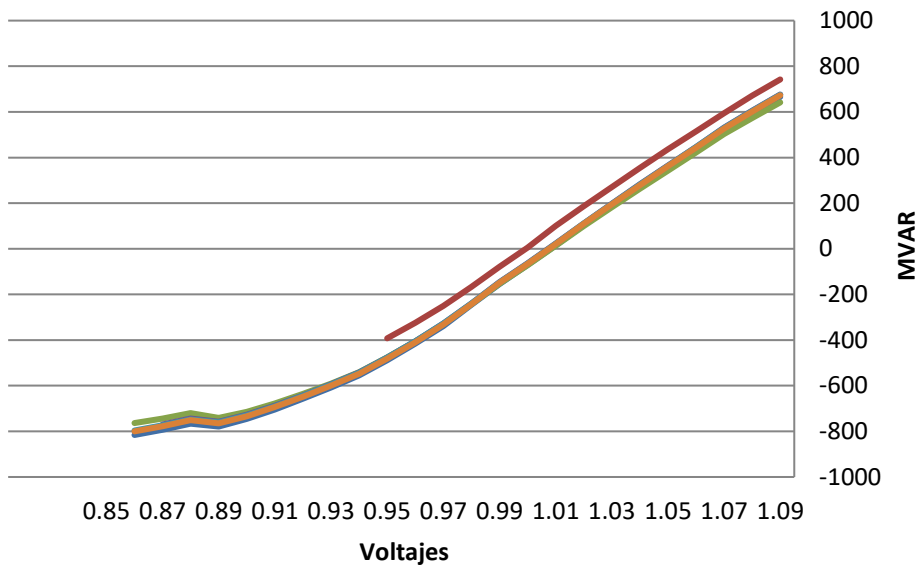
- BASE CASE
- VLTAGE 6096-6837(0A)
- VLTAGE 6005-6830(9A)
- VLTAGE 6005-6596(0A)
- VLTAGE 6713-6741(2C)
- VLTAGE 6837-6840(1)

1023-3-2037CA_ModMax_Lluv- 230kV+BC Nodo: 6009



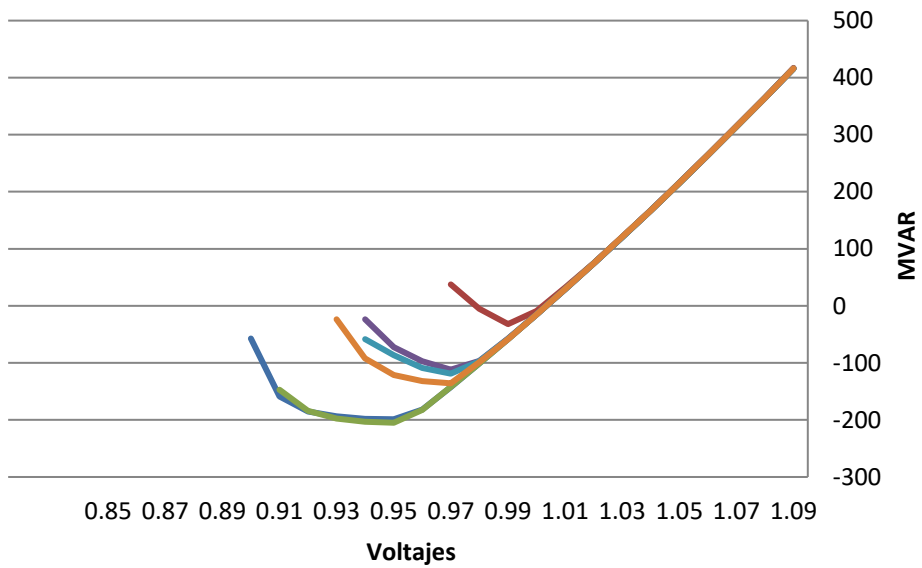
- BASE CASE
- VLTAGE 6837-6840(1)
- VLTAGE 6096-6837(0A)
- VLTAGE 6005-6830(9A)
- VLTAGE 6005-6596(0A)
- VLTAGE 6713-6741(2C)

1023-3-2037CA_ModMax_Lluv- 230kV+BC Nodo: 6011



- BASE CASE
- VLTAGE 6096-6837(0A)
- VLTAGE 6005-6596(0A)
- VLTAGE 6837-6840(1)
- VLTAGE 6005-6830(9A)
- VLTAGE 6713-6741(2C)

1023-3-2037CA_ModMax_Lluv- 230kV+BC Nodo: 6173



- BASE CASE
- VLTAGE 6096-6837(0A)
- VLTAGE 6005-6596(0A)
- VLTAGE 6837-6840(1)
- VLTAGE 6005-6830(9A)
- VLTAGE 6713-6741(2C)

NODO	BASE CASE	VLTAGE 6837-6840(1)	VLTAGE 6096-6837(0A)	VLTAGE 6005-6830(9A)	VLTAGE 6005-6596(0A)	VLTAGE 6713-6741(2C)
6001	-240.9473114	-34.9635582	-247.2424927	-130.2010956	-138.275177	-157.4074402
6002	-207.7886047	-25.47258949	-212.9903259	-113.5296707	-120.539299	-137.5874939
6005	-282.0126648	-26.88907051	-282.9003906	-141.6508942	-151.7163696	-185.7074432
6009	-644.8181152	-143.4680481	-615.0085449	-486.5531311	-515.8930664	-520.9127197
6011	-815.8252563	-392.3721313	-763.6150513	-769.9535522	-796.3717651	-800.0796509
6173	-198.8057098	-31.98788834	-204.8847961	-111.8340607	-118.8672333	-135.7924957